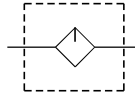
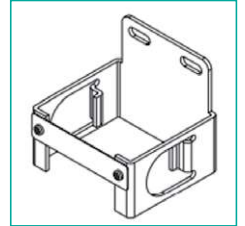


TU - L4

LUBRICATOR
LUBRIFICATORE

Attachment / Accessori

C-type bracket (TU-BC4)
Staffa a C (TU-BC4)

TECHNICAL FEATURES / CARATTERISTICHE TECNICHE

Port size / Taglia	G 1/2"
Fluid / Fluido	Air / Aria
Max. operating pressure <i>Range massimo di pressione</i>	10 Bar
Proof pressure <i>Pressione di scoppio</i>	15 Bar
Ambient temperature <i>Temperatura ambiente</i>	- 5 ~ +60°C (no freezing - no congelamento)
Lubricating oil capacity <i>Capacità tazza olio</i>	200 cc (L)
Min. flow for oil drip <i>Flusso minimo gocciolamento olio</i>	80 L/min
Recommended lubricating oil <i>Olio di lubrificazione consigliato</i>	ISO-VG32
Weight / Peso	410 g
Attachment / Accessori	C-type bracket (TU-BC4) staffa a C (TU-BC4)

ENCODING / CODIFICA

TU - L4 - □ - □

<p>Model Modello</p>	<p>Port size: Connessione: 12 1/2"</p>	<p>Bowl /Tazza: P Protection case Tazza protetta M Metal bowl Tazza di metallo</p>
---------------------------------	---	---

DIMENSIONS / DIMENSIONI

