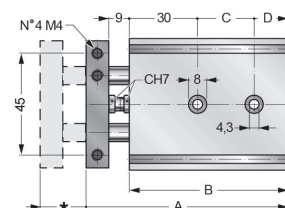
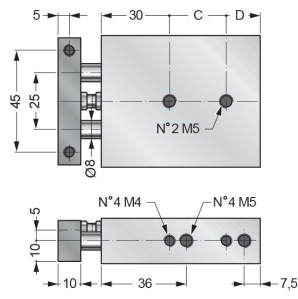
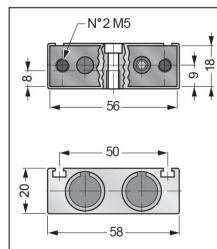
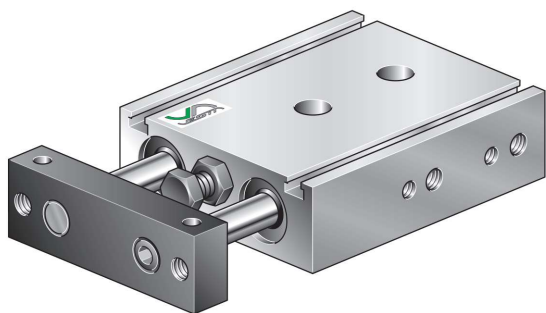




HPSK-..-16-..-...

DUAL ROD CYLINDER Ø16
SEMISLITTA PNEUMATICA Ø16



Stroke Corsa (mm)	A	B	C	D
10	89	70	25	15
20	99	80	25	25
30	109	90	35	25
40	119	100	35	35
50	129	110	35	45
75	154	135	35	70



Seals kit for dual rod cylinder HPSK Ø16 serie
Kit guarnizioni semislitte pneumatiche serie HPS K Ø16

Bore
Alesaggio

Seals kit code
Codice guarnizioni

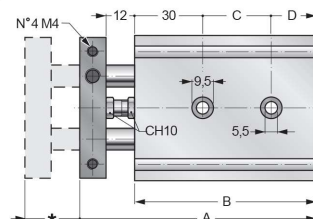
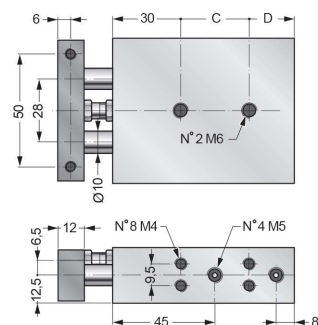
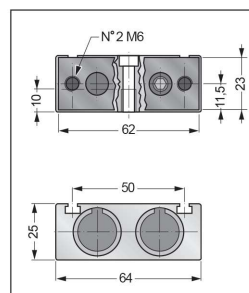
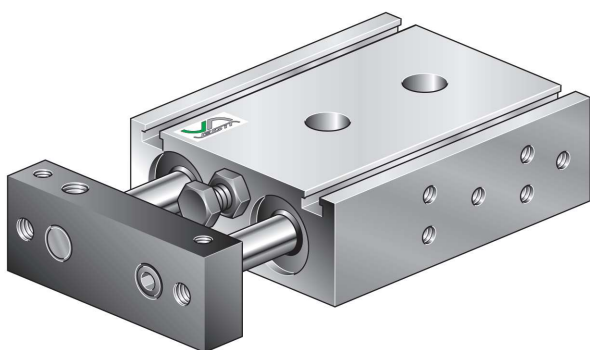
16

HPSK16SG

* = Stroke / Corsa

HPSK-..-20-..-...

DUAL ROD CYLINDER Ø20
SEMISLITTA PNEUMATICA Ø20



Stroke Corsa (mm)	A	B	C	D
10	104	80	30	20
20	114	90	30	30
30	124	100	40	30
40	134	110	40	40
50	144	120	40	50
75	169	145	60	55
100	194	170	60	80



Seals kit for dual rod cylinder HPSK Ø20 serie
Kit guarnizioni semislitte pneumatiche serie HPS K Ø20

Bore
Alesaggio

Seals kit code
Codice guarnizioni

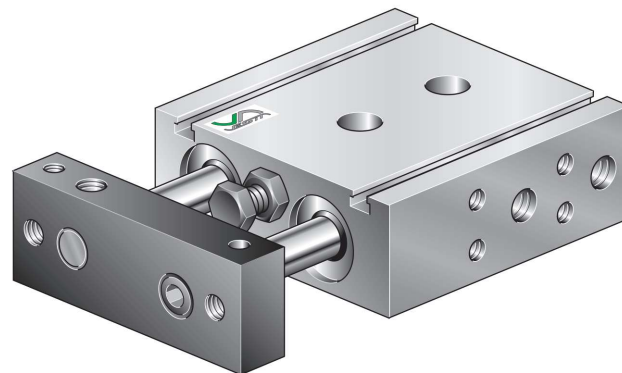
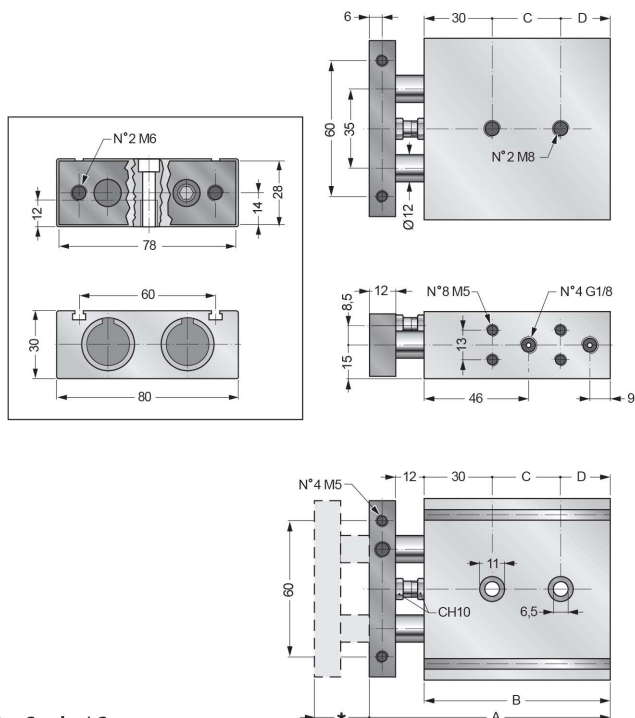
20

HPSK20SG

* = Stroke / Corsa

DUAL ROD CYLINDER Ø25
SEMISLITTA PNEUMATICA Ø25

HPSK-.-25-.-...



Stroke Corsa (mm)	A	B	C	D
10	106	82	30	22
20	116	92	30	32
30	126	102	40	32
40	136	112	40	42
50	146	122	40	52
75	171	147	60	57
100	196	172	60	82

* = Stroke / Corsa

Seals kit for dual rod cylinder HPSK Ø25 serie
Kit guarnizioni semislitte pneumatiche serie HPSK Ø25

Bore Alesaggio Seals kit code Codice guarnizioni

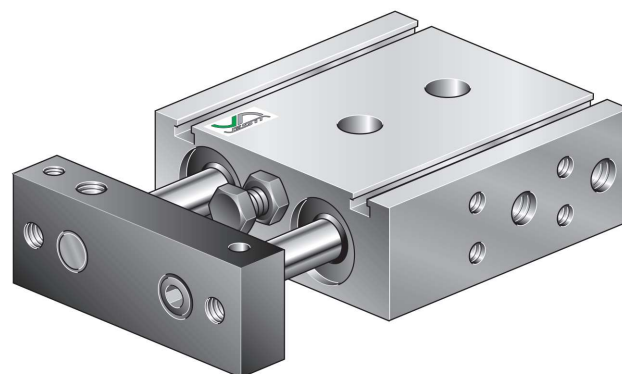
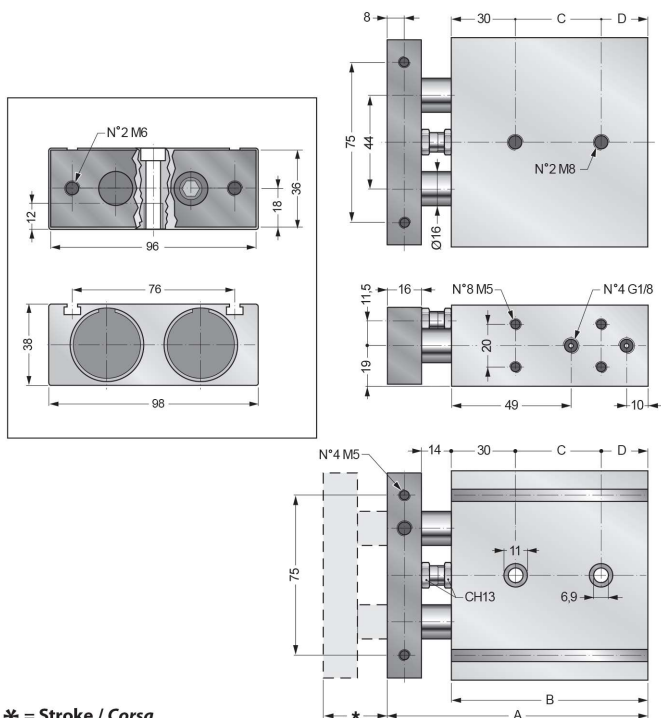
25

HPSK25SG



DUAL ROD CYLINDER Ø32
SEMISLITTA PNEUMATICA Ø32

HPSK-.-32-.-...



Stroke Corsa (mm)	A	B	C	D
10	122	92	40	22
20	132	102	40	32
30	142	112	50	32
40	152	122	50	42
50	162	132	50	52
75	187	157	70	57
100	212	182	70	82

* = Stroke / Corsa

Seals kit for dual rod cylinder HPSK Ø32 serie
Kit guarnizioni semislitte pneumatiche serie HPSK Ø32

Bore Alesaggio Seals kit code Codice guarnizioni

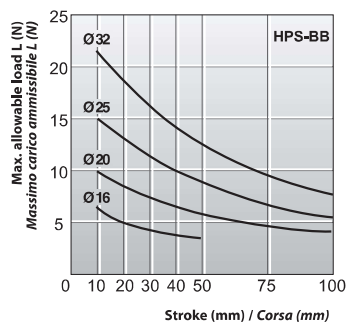
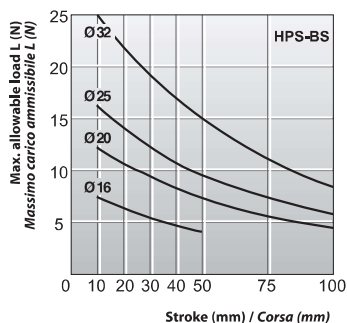
32

HPSK32SG





MAXIMUM ALLOWABLE LOAD HPSK SERIE / CARICO MASSIMO AMMISSIBILE SERIE HPSK

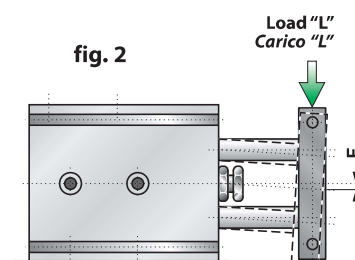
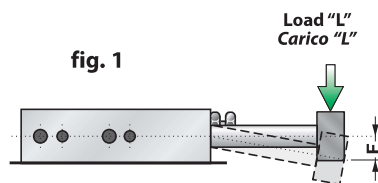
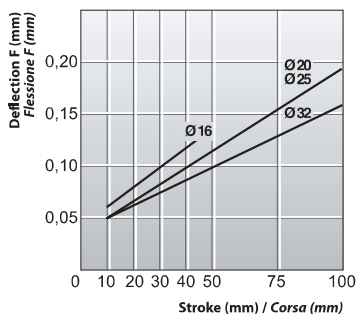


Graphics of maximum allowable load for dual rod cylinder "BS" serie (with rod bearing brass) and BB serie (with ball bushing)

Diagrammi del carico massimo ammissibile per semislitte pneumatiche della serie BS (con bronzine a strisciamento) e della serie BB (con cuscinetti a ricircolo di sfere)



PISTON RODS DEFLECTION / FLESSIONE DEGLI STELI



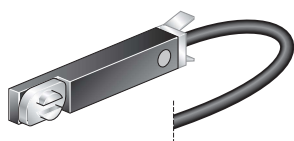
The graph shows the standard value of piston rod deflection (F) with a load of 10 N.

The piston rods deflection value in the case shown in fig. 2 is 30% less than value shown in the graph referred to fig.1

Il grafico riporta i valori standard della flessione (F) degli steli nella condizione di carico per $L=10$ N.

I valori della flessione degli steli nella condizione di carico della fig.2 sono inferiori del 30% rispetto ai valori di carico della fig.1 da cui è ricavato il grafico.

MAGNETIC SWITCHES FOR HPSK CYLINDERS / FINECORSA MAGNETICI PER CILINDRI HPSK



For magnetic switches features see:
Caratteristiche finecorsa magnetici vedi:

**VNCR2, VNPR2,
VNCE3, VNPE3.**

Pag. A-19

MAGNETIC SWITCH POSITIONING / POSIZIONAMENTO DEI FINECORSA MAGNETICI

