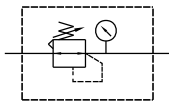
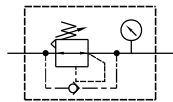


TU - R3

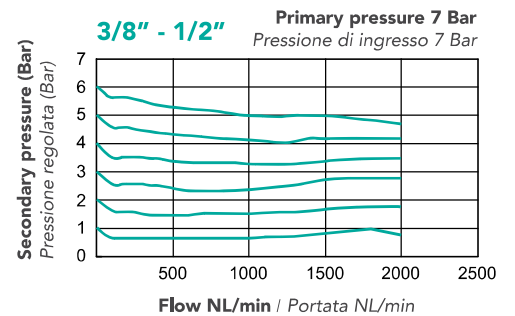
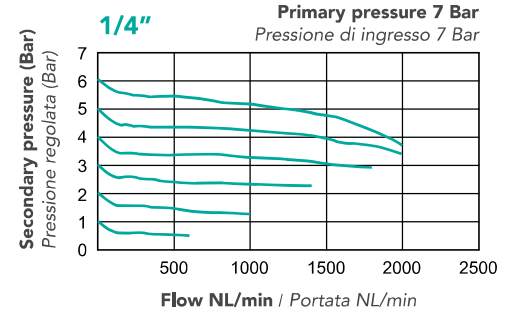
PRESSURE REGULATOR
REGOLATORE DI PRESSIONE

Standard / standard

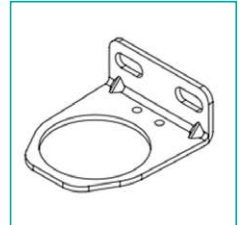


Backflow / flusso di ritorno

FLOW / PORTATA



Attachment / Accessori

L-type bracket (TU-BL3)
Staffa a L (TU-BL3)

TECHNICAL FEATURES / CARATTERISTICHE TECNICHE

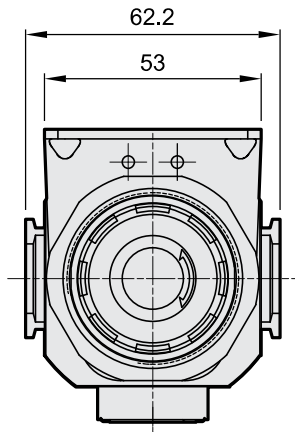
Port size / Connessione	G 1/4" G 3/8" G 1/2"
Fluid / Fluido	Air / Aria
Max. operating pressure Range massimo di pressione	10 Bar
Proof pressure Pressione di scoppio	15 Bar
Regulated pressure range Range di regolazione di pressione	0,5 ~ 8,5 Bar
Ambient temperature Temperatura ambiente	- 5 ~ +60°C (no freezing - no congelamento)
Attachment / Accessori	Pressure gauge, pressure switch, L-type bracket (TU-BL3) Manometro, pressostato digitale, staffa a L (TU-BL3)
Weight / Peso	270 g

ENCODING / CODIFICA

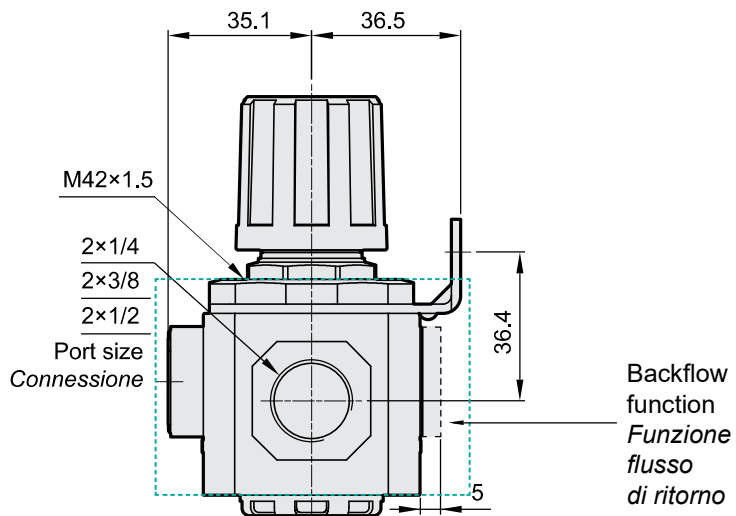
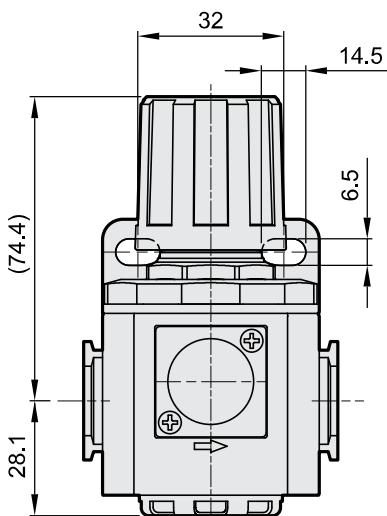
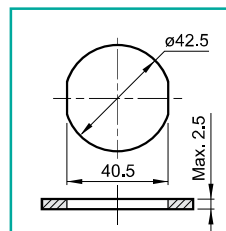
TU - R3 - □ - □ □ □

<p>Model Modello</p>	<p>Port size: Connessione: 14 1/4" 38 1/8" 12 1/2"</p>	<p>Backflow function: S Standard B Backflow function Funzione flusso di ritorno</p>	<p>Exhaust mechanism: Meccanismo di scarico: R Relieving type con relieving N Non relieving type senza relieving</p>	<p>Pressure Gauge: / Manometro: G Integrated pressure gauge Manometro integrato A Gauge adapter set (TU-AS) Adattatore per manometro (TU-AS) E Pressure switch (EP41) Pressostato digitale (EP41)</p>
---------------------------------	---	--	---	--

DIMENSIONS / DIMENSIONI



Panel mounting hole
Foro per montaggio a pannello



Backflow function
Funzione flusso di ritorno