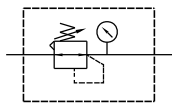
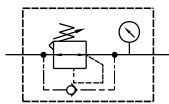


## TU - R2

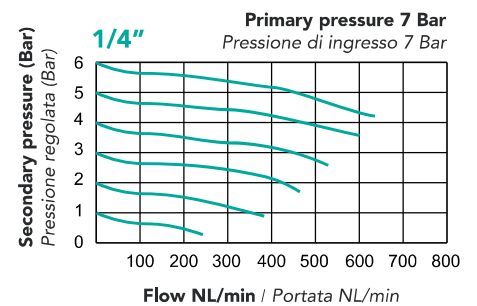
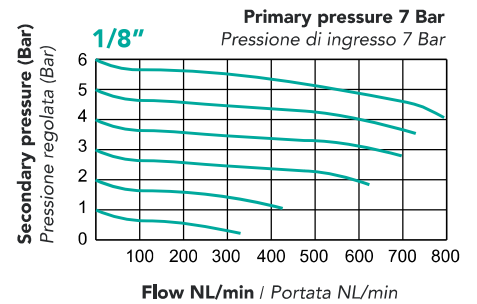
PRESSURE REGULATOR  
REGOLATORE DI PRESSIONE

Standard / standard

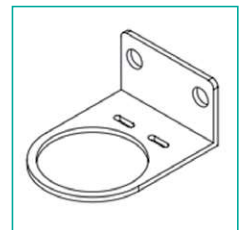


Backflow / flusso di ritorno

## FLOW / PORTATA



## Attachment / Accessori

L-type bracket (TU-BL2)  
Staffa a L (TU-BL2)

## TECHNICAL FEATURES / CARATTERISTICHE TECNICHE

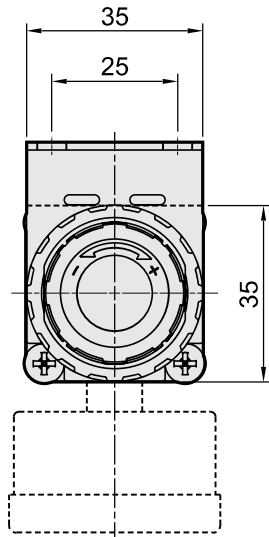
<b>Port size / Connessione</b>	G 1/4" G1/8"
<b>Fluid / Fluido</b>	Air / Aria
<b>Max. operating pressure</b> Range massimo di pressione	10 Bar
<b>Proof pressure</b> Pressione di scoppio	15 Bar
<b>Regulated pressure range</b> Range di regolazione di pressione	Version - Versione A: 0,5 ~ 2 Bar Version - Versione B: 0,5 ~ 4 Bar Version - Versione C: 0,5 ~ 8,5 Bar
<b>Ambient temperature</b> Temperatura ambiente	- 5 ~ +60°C (no freezing - no congelamento)
<b>Attachment / Accessori</b>	Pressure gauge, L-type bracket (TU-BL2) Manometro, staffa tipo L (TU-BL2)
<b>Weight / Peso</b>	190 g

ENCODING / CODIFICA

TU - R2 - □ - □ □ □

<p><b>Model</b> Modello</p>	<p><b>Port size:</b> Connessione <b>14</b> 1/4" <b>18</b> 1/8"</p>	<p><b>Backflow function:</b> <b>S</b> Standard <b>B</b> Backflow function Funzione flusso di ritorno</p>	<p><b>Pressure range:</b> Range di pressione: <b>A</b> (0,5÷2 Bar) <b>B</b> (0,5÷4 Bar) <b>C</b> (0,5÷8,5 Bar)</p>	<p><b>Exhaust mechanism:</b> Meccanismo di scarico: <b>R</b> Relieving type con relieving <b>N</b> Non relieving type senza relieving</p>
---------------------------------	--	--	--	---

DIMENSIONS / DIMENSIONI



Panel mounting hole  
Foro per montaggio a pannello

