

AXIAL REAR INLET AIR CYLINDERS CILINDRI PNEUMATICI CON ALIMENTAZIONE POSTERIORE IN ASSE

SERIE **DRM**

With magnetic piston / Con pistone magnetico

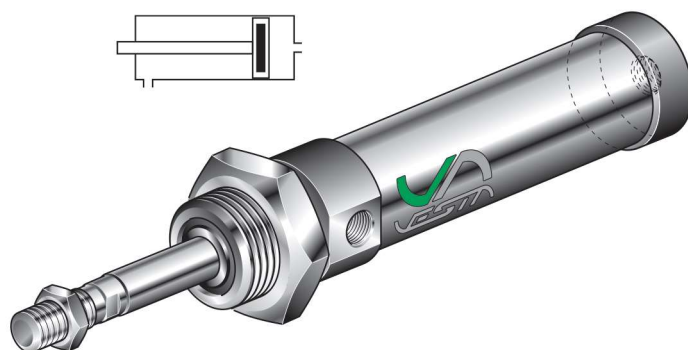
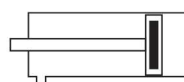
DRM /

Bore
Alesaggio (mm):
Ø12 **12**
Ø16 **16**
Ø20 **20**
Ø25 **25**

Stroke
Corsa
(mm):

SEA Simple acting front spring
Cilindro semplice effetto molla anteriore

VS Viton rod seal
Guarnizione dello stelo in Viton
VV All viton seals
Tutte le guarnizioni in Viton



With magnetic piston, mechanical buffers at both ends.
Con pistone magnetico, smorzatori d'urto meccanici.

Cylinder fixing see:
Fissaggi per cilindri vedi: **Pag. A-10, A-11.**

Features of reed switches see:
Caratteristiche finecorsa magnetici: **Pag. A-11, A-19.**

| Bore Alesaggio | Standard stroke / Corse Standard | | | | | | | | | | | | | |
|-------------------|----------------------------------|----|----|----|-----|-----|-----|-----|-----|-----|-----|-----|-----|-----|
| | 10 | 25 | 50 | 80 | 100 | 125 | 160 | 200 | 250 | 300 | 350 | 400 | 450 | 500 |
| 12 | • | • | • | • | • | • | • | • | • | • | • | • | • | • |
| 16 | • | • | • | • | • | • | • | • | • | • | • | • | • | • |
| 20 | • | • | • | • | • | • | • | • | • | • | • | • | • | • |
| 25 | • | • | • | • | • | • | • | • | • | • | • | • | • | • |

End caps Anodized aluminium.
Piston rod Rolled burnished stainless steel X5CrNi 1810.
Barrel Anodized aluminium.
Seals NBR rubber.
Cushioning Mechanical buffers.

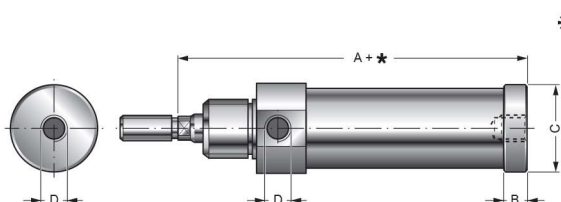
Environment temperature range -10 °C ÷ +80 °C.
Temperature range of medium 0 °C ÷ +40 °C.
Lubrication Not required.
Medium Filtered air.
Max operating pressure 10 bar.

TECHNICAL FEATURES

Testate Alluminio anodizzato.
Stelo Acciaio inox X5CrNi 1810 rollato.
Camicia Alluminio anodizzato.
Guarnizioni Tutte in NBR.
Ammortizzatori Meccanici in poliuretano.

Temperatura ambiente -10 °C ÷ +80 °C.
Temperatura fluido 0 °C ÷ +40 °C.
Lubrificazione Non necessaria.
Fluido Aria filtrata.
Pressione max d'esercizio 10 bar.

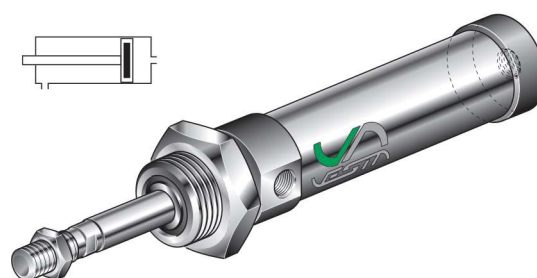
CARATTERISTICHE TECNICHE



* = Stroke / Corsa

BASIC CYLINDER
CILINDRO BASE

DRM .. / ...



For other dimensions please see
DVM standard cylinder
Per altre dimensioni vedere
cilindri **DVM** standard

| Bore Alesaggio | A | B | ØC | D | Code Codice |
|-------------------|----|-----|----|------|-------------------|
| 12 | 69 | 6,5 | 18 | M5 | DRM 12/... |
| 16 | 74 | 6,5 | 22 | M5 | DRM 16/... |
| 20 | 85 | 8,5 | 28 | G1/8 | DRM 20/... |
| 25 | 90 | 8,5 | 34 | G1/8 | DRM 25/... |

Seals kit code = **Cylinder code + Bore + Versions + - SG:**
(The kit includes all seals).

Codice del kit = **Codice del cilindro + Alesaggio + Versions + - SG:**
(Il kit comprende tutte le guarnizioni necessarie).

Example / Esempio: **DRM 16 VV - SG**

SEALS KIT
KIT GUARNIZIONI DI RICAMBIO

..... - SG

