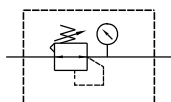
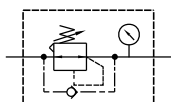


TU - R4H

HIGH PRESSURE REGULATOR
REGOLATORE DI ALTA PRESSIONE

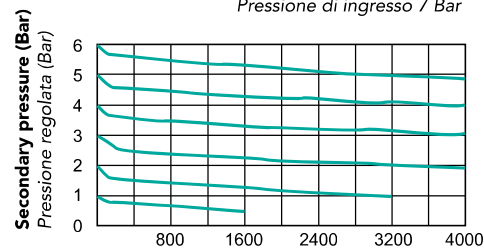
Standard / standard



Backflow / flusso di ritorno

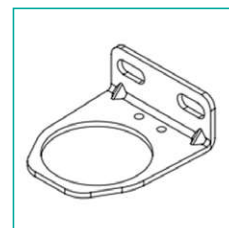
FLOW / PORTATA

Primary pressure 7 Bar
Pressione di ingresso 7 Bar



Flow NL/min / Portata NL/min

Attachment / Accessori

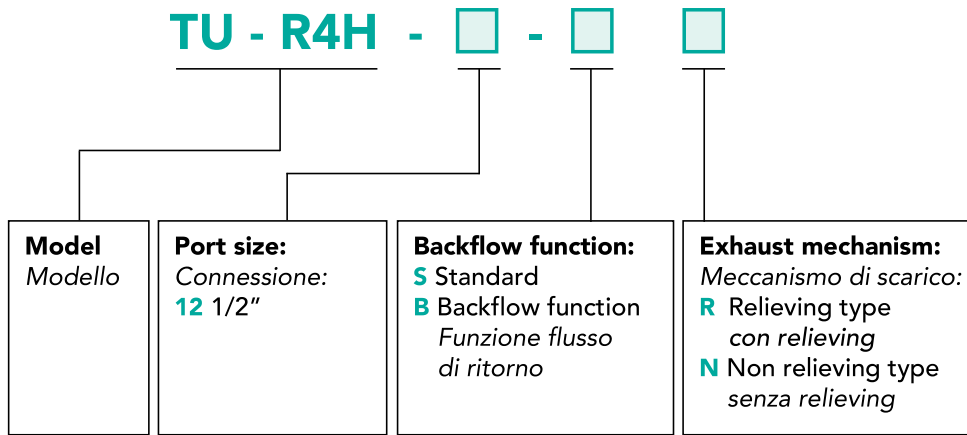
L-type bracket (TU-BL4)
Staffa a L (TU-BL4)

*Pressure gauge to be ordered separately
*Il manometro è da ordinare a parte

TECHNICAL FEATURES / CARATTERISTICHE TECNICHE

Port size / Connessione	G 1/2"
Fluid / Fluido	Air / Aria
Max. operating pressure Range massimo di pressione	15 Bar
Proof pressure Pressione di scoppio	20 Bar
Regulated pressure range Range di regolazione di pressione	10 ~ 15 Bar
Ambient temperature Temperatura ambiente	- 5 ~ +60°C (no freezing - no congelamento)
Attachment / Accessori	Pressure gauge, bracket (TU-BL4) Manometro, staffa (TU-BL4)
Weight / Peso	450 g

ENCODING / CODIFICA



DIMENSIONS / DIMENSIONI

