

**FOR USE IN DUSTY AND AGGRESSIVE ENVIRONMENT, VDMA - ISO 15552
CILINDRI PER AMBIENTI AGGRESSIVI, VDMA - ISO 15552**

SERIE XJS

With magnetic piston / Con pistone magnetico

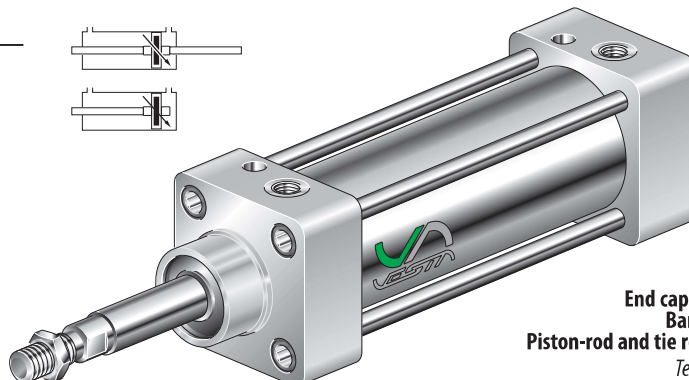
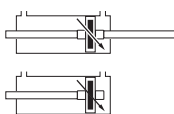
XJS /

Bore / Alesaggio (mm):

- Ø32 32
- Ø40 40
- Ø50 50
- Ø63 63
- Ø80 80
- Ø100 100

P
Through rod cylinder
Cilindro stelo passante

Stroke / Corsa (mm):



End caps: acetalic polymer
Barrel: stainless steel
Piston-rod and tie rods: stainless steel
Testate: resina acetilica
Camicia: acciaio inox
Stelo e tiranti: acciaio inox

XJS cylinder fixing see:

Fissaggi per cilindri XJS vedi:

..... Pag. A-43; A-47 ÷ A-48.

Features of reed switches see:

Caratteristiche finecorsa magnetici:

..... Pag. A-19; A-48.

Effective cushion length
Lunghezza utile ammortizzatore

Bore Alesaggio	Length Lunghezza
32	24
40	27
50	30
63	30
80	36
100	38

Bore Alesaggio	Standard stroke / Corse Standard													
	25	50	80	100	125	160	200	250	300	350	400	450	500	600
32	•	•	•	•	•	•	•	•	•	•	•	•	•	•
40	•	•	•	•	•	•	•	•	•	•	•	•	•	•
50	•	•	•	•	•	•	•	•	•	•	•	•	•	•
63	•	•	•	•	•	•	•	•	•	•	•	•	•	•
80	•	•	•	•	•	•	•	•	•	•	•	•	•	•
100	•	•	•	•	•	•	•	•	•	•	•	•	•	•

- End caps Acetalic polymer (Zellamid 900).
- Piston rod Stainless steel X5 Cr Ni 18-10.
- Tie rods Stainless steel X10 Cr Ni S 18-09.
- Barrel Stainless steel X5 Cr Ni 18-10 tube.
- Seals Rod seal in polyurethane, other seals in NBR.
- Cushioning Pneumatic adjusting cushioning with screw in X10 Cr Ni S 18-09.

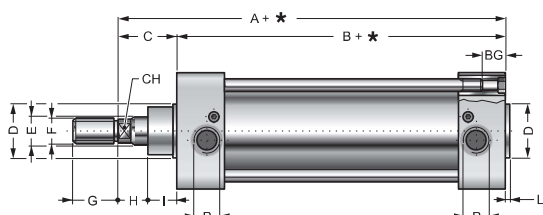
- Environment temperature range -10 °C ÷ +70 °C.
- Temperature range of medium 0 °C ÷ +40 °C.
- Lubrication Not required.
- Medium Filtered air.
- Max operating pressure 10 bar.
- Nuts Stainless steel X10 Cr Ni S 18-09.

TECHNICAL FEATURES

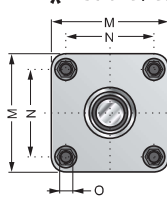
- Testate Resina acetilica (Zellamid 900).
- Stelo Acciaio inox X5 Cr Ni 18-10
- Tiranti Acciaio inox X10 Cr Ni S 18-09.
- Camicia Tubo in acciaio inox X5 Cr Ni 18-10.
- Guarnizioni Dello stelo in poliuretano, altre in NBR.
- Ammortizzatori Regolazione pneumatica con viti regolabile in X10 Cr Ni S 18-09.

- Temperatura ambiente -10 °C ÷ +70 °C.
- Temperatura fluido 0 °C ÷ +40 °C.
- Lubrificazione Non necessaria.
- Fluido Aria filtrata.
- Pressione max d'esercizio 10 bar.
- Bussola e dado Acciaio inox X10 Cr Ni S 18-09.

CARATTERISTICHE TECNICHE

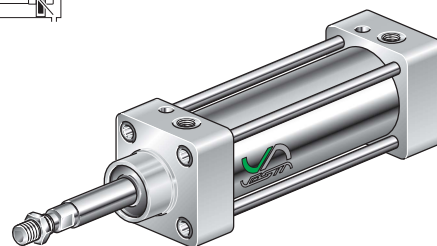
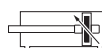


* = Stroke / Corsa

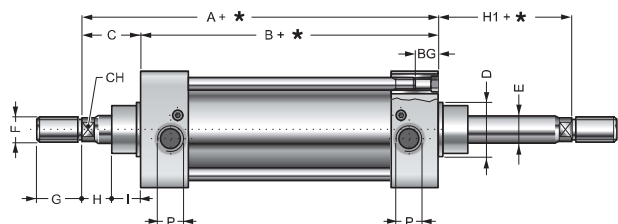


SINGLE ROD
CILINDRO BASE STELO SEMPLICE

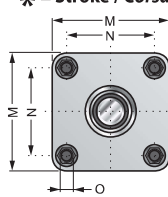
XJS .. / ...



Bore Alesaggio	A	B	C	D	E	F	G	H	I	L	M	N	O	P	BG	CH	Code Codice
32	120	94	26	30	12	M10x1,25	20	7	19	4	47	32,5	M6	G1/8	15	10	XJS 32/... P
40	135	105	30	35	16	M12x1,25	24	8	22	4	54	38	M6	G1/4	15	13	XJS 40/... P
50	143	106	37	40	20	M16x1,5	32	11	26	2	66	46,5	M8	G1/4	15	17	XJS 50/... P
63	158	121	37	45	20	M16x1,5	32	13	24	4	78	56,5	M8	G3/8	15	17	XJS 63/... P
80	174	128	46	45	25	M20x1,5	40	20	26	2	98	72	M10	G3/8	18	21	XJS 80/... P
100	189	138	51	55	25	M20x1,5	40	25	26	2	110	89	M10	G1/2	18	25	XJS 100/... P

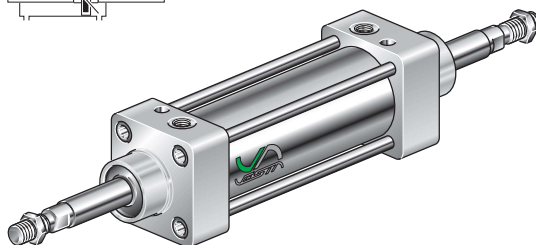


* = Stroke / Corsa



THROUGH ROD
STELO PASSANTE

XJS .. / ... P



Bore Alesaggio	A	B	C	D	E	F	G	H	H1	I	M	N	O	P	BG	CH	Code Codice
32	120	94	26	30	12	M10x1,25	20	7	26	19	47	32,5	M6	G1/8	15	10	XJS 32/... P
40	135	105	30	35	16	M12x1,25	24	8	30	22	54	38	M6	G1/4	15	13	XJS 40/... P
50	143	106	37	40	20	M16x1,5	32	11	37	26	66	46,5	M8	G1/4	15	17	XJS 50/... P
63	158	121	37	45	20	M16x1,5	32	13	37	24	78	56,5	M8	G3/8	15	17	XJS 63/... P
80	174	128	46	45	25	M20x1,5	40	20	46	26	98	72	M10	G3/8	18	21	XJS 80/... P
100	189	138	51	55	25	M20x1,5	40	25	51	26	110	89	M10	G1/2	18	25	XJS 100/... P