

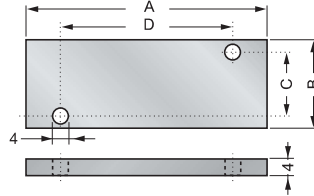
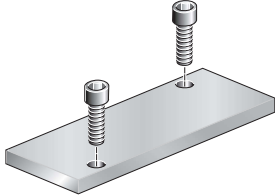




## COILS SOLENOID VALVES AND ACCESSORIES - SOLENOIDI PER ELETTROVALVOLE ED ACCESSORI

### KPCH01.

PLUG FLAT  
CHIUSURA POSTO INUTILIZZATO



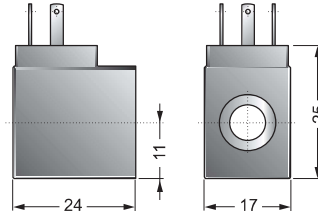
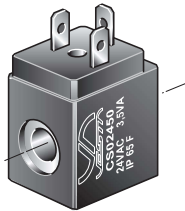
Plug flat includes assembling screws.

La piastrina di chiusura dei posti non utilizzati della base è fornita con le relative viti di fissaggio.

Size Taglia	A	B	C	D	Code Codice
1/8	49	18	13	35,5	KPCH018
1/4	60	22	16,2	50	KPCH014

### CS.....

COILS  
SOLENOIDI PER ELETTROVALVOLE



#### CODES / CODICI

Code ordination Codice ordinazione	Voltage Tensione
CS01200	12 V DC
CS02400	24 V DC
CS02450	24 V 50/60Hz AC
CS11550 (*)	115 V 50/60Hz AC
CS23050 (*)	230 V 50/60Hz AC

(\*) Please see page / Vedi pag. B-37

#### TECHNICAL FEATURES

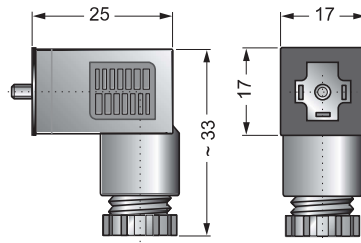
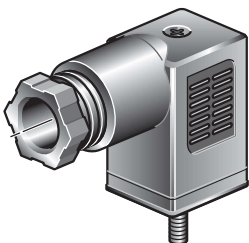
Standard tensions	12, 24, V DC 24, 115, 230 V AC (50/60 Hz)
Other tensions	Contact our commercial department
Duty cycle	100% (continuous)
Power at 20°C	2,5 Watt DC; 3,6 VA AC
Nominal tension	± 10% during normal working
Operating temperature range	-20 °C ÷ +50 °C
Degree of protection	Fixed plug IP 65 (IEC 144) with connector
Insulation	Class F
Materials	Wire class H - coil moulding glass filled nylon

#### CARATTERISTICHE TECNICHE

Tensioni standard	12, 24, V DC 24, 115, 230 V AC (50/60 Hz)
Altre tensioni	Interpellare il ns. servizio tecnico commerciale
Funzionamento	100% ED alla potenza ed alla temperatura ambiente indicata
Potenza assorbita a 20 °C	2,5 Watt in DC; 3,6 VA in AC
Tensione nominale	± 10% a bobina calda
Limiti di temperatura ambiente	-20 °C ÷ +50 °C
Protezione	IP 65 secondo IEC 144 con connettore
Bobina	Bobina completa classe F
Materiali	Rivestimento nylon caricato vetro filo di rame classe H

### CEP/0.....

SOLENOID CONNECTORS  
CONNETTORI



#### CODES / CODICI

Description Descrizione	Code Codice	Voltage Tensione
Universal connector Connettore universale	CEP/0	All tension Tutte le tensioni
Connector with led Connettore con led	CEP/0 L 10 / 50 CEP/0 L 70 / 250	10/50 V AC / DC 70/250 V AC / DC
Connector with led and varistor Connettore con led e varistore	CEP/0 LV 24 CEP/0 LV 110 CEP/0 LV 220	24 V AC / DC 115 V AC / DC 230 V AC / DC

#### TECHNICAL FEATURES

Wire connection	With screwed terminals
Gland thread	PG 7
Number of poles	2 Poles + earth
Housing colour	Black, transparent in the led version.

#### CARATTERISTICHE TECNICHE

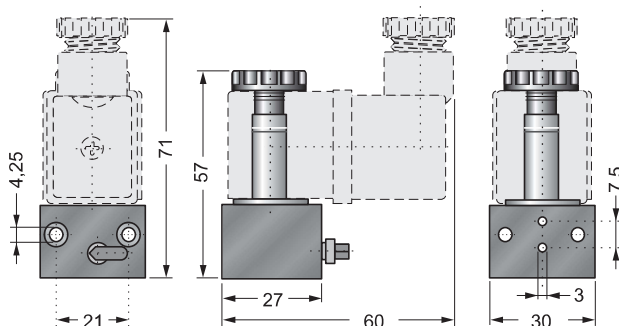
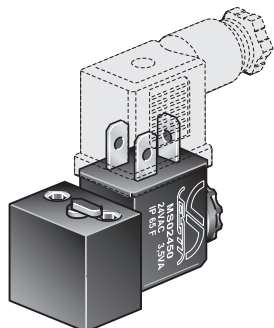
Connessione cavi	Con morsetti a vite
Filettatura passacavo	PG 7
N° Poli	2 Poli + terra
Colori connettore	Nero, trasparente nelle versioni con led.



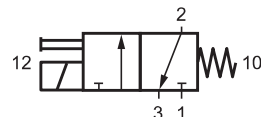
## CNOMO PILOT CONTROL SOLENOID VALVES AND ACCESSORIES / ELETTRPILOTI CNOMO ED ACCESSORI

### ELCNU - .....

CNOMO PILOT CONTROL SOLENOID VALVE  
ELETTRPILOTA CNOMO CON BOBINA **DIN 43650-A**



#### SIMBOL / SIMBOLO



#### CODES / CODICI

Code Codice ordinazione	Voltage Tensione
<b>ELCNU-00000</b> .....	No coil / Senza solenoide
<b>ELCNU-01200</b> .....	12 V DC
<b>ELCNU-02400</b> .....	24 V DC
<b>ELCNU-02450</b> .....	24 V 50/60Hz AC
<b>ELCNU-11550</b> (*) .....	115 V 50/60Hz AC
<b>ELCNU-22050</b> (*) .....	220 V 50/60Hz AC

(\*) Please see page / Vedi pag. **B-37**

#### TECHNICAL FEATURES

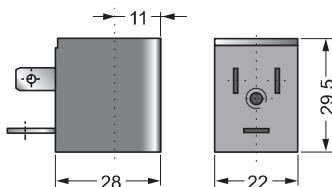
Flow section .....	Ø 1 mm
Ambient temperature range .....	-10 °C ÷ +50 °C
Temperature range of medium .....	0 °C ÷ +50 °C
Lubrication .....	Not required
Medium .....	Filtered air
Operating pressure range .....	0 ÷ 10 bar
Reference temperature .....	+20 °C
Reference pressure .....	6 bar
Nominal air flow .....	80 NI/min

#### CARATTERISTICHE TECNICHE

Diametro nominale .....	Ø 1 mm
Temperatura ambiente .....	-10 °C ÷ +50 °C
Temperatura fluido .....	0 °C ÷ +50 °C
Lubrificazione .....	Non necessaria
Fluido .....	Aria filtrata
Pressione d'esercizio .....	0 ÷ 10 bar
Temperatura nominale .....	+20 °C
Pressione nominale .....	6 bar
Portata nominale .....	80 NI/min

### MS .....

COIL  
SOLENOIDE



#### CODES / CODICI

Ordination code Codice ordinazione	Voltage Tensione
<b>MS01200</b> .....	12 V DC
<b>MS02400</b> .....	24 V DC
<b>MS02450</b> .....	24 V 50/60Hz AC
<b>MS11550</b> (*) .....	115 V 50/60Hz AC
<b>MS23050</b> (*) .....	230 V 50/60Hz AC

(\*) Please see page / Vedi pag. **B-37**

#### TECHNICAL FEATURES

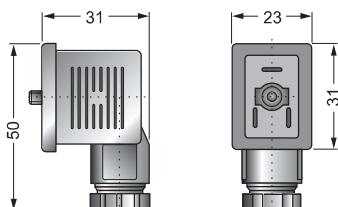
Standard voltage .....	12, 24 V DC 24, 115, 230 V AC (50/60 Hz)
Solenoid characteristics .....	3 Watt in DC; 5 VA in AC
Tension .....	± 10%
Ambient temperature range .....	-20 °C ÷ +50 °C
Degree of .....	Class F
Expoxy .....	Incapsulated

#### CARATTERISTICHE TECNICHE

Tensione standard .....	12, 24 V DC 24, 115, 230 V AC (50/60 Hz)
Prestazioni bobina .....	3 Watt in DC; 5 VA in AC
Tensione nominale .....	± 10% a bobina calda
Limiti di temperatura ambiente .....	-20 °C ÷ +50 °C
Protezione .....	IP 65 secondo IEC 144 con connettore e guarnizioni montate
Bobina .....	Classe F, Filo rame classe 200 °C
Sovrastampatura .....	Resina epossidica

### CEP-1 .....

SOLENOID CONNECTOR  
CONNETTORE



#### CODES / CODICI

Description Descrizione	Code Codice	Tension Tensione
Universal connector Connettore universale	<b>CEP-1</b>	All tension Tutte le tensioni
Connector with led Connettore con led	<b>CEP-1 L 10 / 50</b> <b>CEP-1 L 70 / 250</b>	10/50 V AC / DC 70/250 V AC / DC
Connector with led and varistor Connettore con led e varistore	<b>CEP-1 LV 24</b> <b>CEP-1 LV 110</b> <b>CEP-1 LV 220</b>	24 V AC / DC 115 V AC / DC 230 V AC / DC

#### TECHNICAL FEATURES

Wire connection .....	With screwed terminals
Gland thread .....	PG 9
Number of poles .....	2 Poles + earth
Housing colour .....	Black, transparent in the led version.

#### CARATTERISTICHE TECNICHE

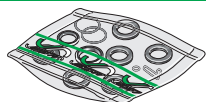
Connessione cavi .....	Con morsetti a vite
Filettatura passacavo .....	PG 9
N° Poli .....	2 Poli + terra
Colori connettore .....	Nero, trasparente nelle versioni con led.

### SET . 1/2 SG

SEALS KIT  
KIT GUARNIZIONI DI RICAMBIO

Seals kit code - Codice del kit

**SET 1 1/2 SG:** for G1/2 **mono-stable** valves - per valvole **monostabili** G1/2.  
**SET 2 1/2 SG:** for G1/2 **bi-stable** valves - per valvole **bistabili** G1/2.



Example / Esempio: **E52W1SM12-02400** → **SET 1 1/2 SG**      **E52W2S012-02400** → **SET 2 1/2 SG**