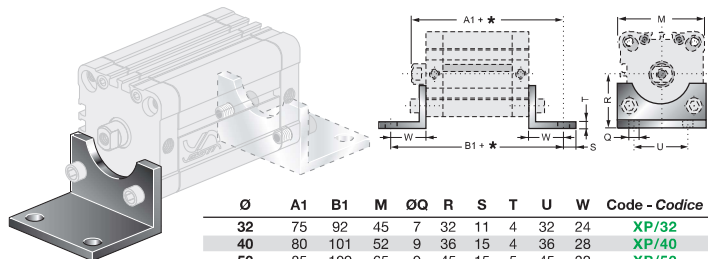


FIXING ACCESSORIES FOR ISO 21287 CYLINDERS / ACCESSORI DI FISSAGGIO PER CILINDRI ISO 21287

Note: the fixing screws are not included in the supply of the fittings / le viti di fissaggio non sono comprese nella fornitura degli accessori.

XP/ .. FOOT MOUNTING
MONTAGGIO A PIEDINI

* = Stroke / Corsa



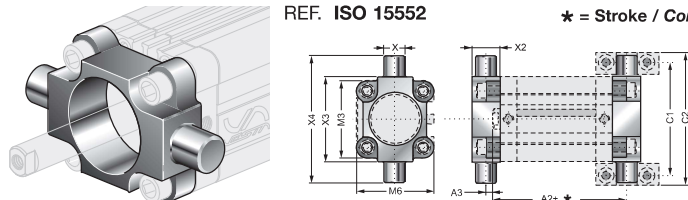
REF. ISO 15552

Ø	A1	B1	M	ØQ	R	S	T	U	W	Code - Codice
32	75	92	45	7	32	11	4	32	24	XP/32
40	80	101	52	9	36	15	4	36	28	XP/40
50	85	109	65	9	45	15	5	45	32	XP/50
63	89	113	75	9	50	15	5	50	32	XP/63
80	105	136	95	12	63	20	6	63	41	XP/80
100	118	149	115	14	71	25	6	75	41	XP/100

XCBF/ .. FLOATING FRONT HINGE MOUNTING
MONTAGGIO CERNIERA OSCILLANTE ANTERIORE

REF. ISO 15552

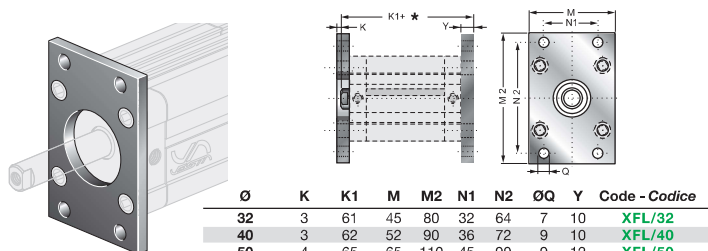
* = Stroke / Corsa



Ø	A2	A3	C1	C2	M3	M6	ØX ^{Ø9}	X2	X3	X4	Code - Codice
32	58,5	0,5	71	86	45	45	12	15	50	74	XCBF/32
40	62	3	87	105	54	54	16	20	63	95	XCBF/40
50	63	2	99	117	64	64	16	20	75	107	XCBF/50
63	69,5	4,5	116	136	75	75	20	25	90	130	XCBF/63
80	76,5	2,5	136	156	93	93	20	25	110	150	XCBF/80
100	92	5	164	189	110	110	25	30	132	182	XCBF/100

XFL/ .. FLANGE MOUNTING
MONTAGGIO A FLANGIA

* = Stroke / Corsa



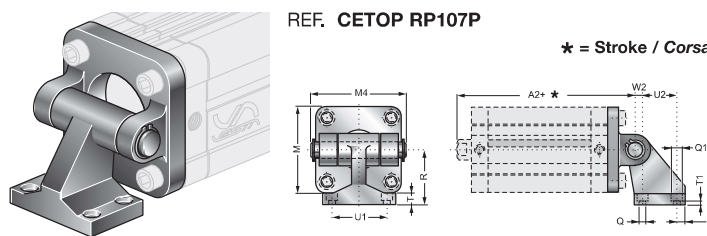
REF. ISO 15552

Ø	K	K1	M	M2	N1	N2	ØQ	Y	Code - Codice
32	3	61	45	80	32	64	7	10	XFL/32
40	3	62	52	90	36	72	9	10	XFL/40
50	4	65	65	110	45	90	9	12	XFL/50
63	4	69	75	120	50	100	9	12	XFL/63
80	6	80	95	150	63	126	12	16	XFL/80
100	6	93	115	170	75	150	14	16	XFL/100

XAS/ .. REAR HINGE HORIZONTAL MOUNTING
MONTAGGIO A CONTROCERNIERA ORIZZONTALE

REF. CETOP RP107P

* = Stroke / Corsa



Ø	A2	M	M4	ØQ	ØQ1	R	S	T	T1	U1	U2	W2	Code - Codice
32	73	45	54	7	11	32	6,5	8	6,5	38	18	3	XAS/32
40	77	52	63	7	11	36	6,5	10	8,5	41	22	2	XAS/40
50	80	65	71	9	15	45	7,5	12	10,5	50	30	3	XAS/50
63	89	75	81	9	15	50	7,5	14	12,5	52	35	2	XAS/63
80	100	95	101	11	18	63	10	14	11,5	66	40	7	XAS/80
100	118	115	123	11	18	71	10	17	14,5	76	50	5	XAS/100

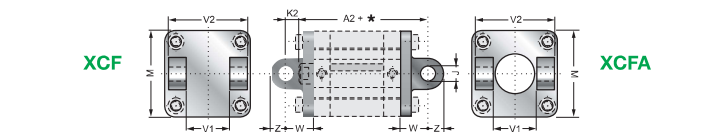
XCF/ .. FRONT AND REAR CLEVIS (FEMALE) MOUNTING
MONTAGGIO CERNIERA FEMMINA ANT. E POST.

XCF

XCFA

REF. ISO 15552

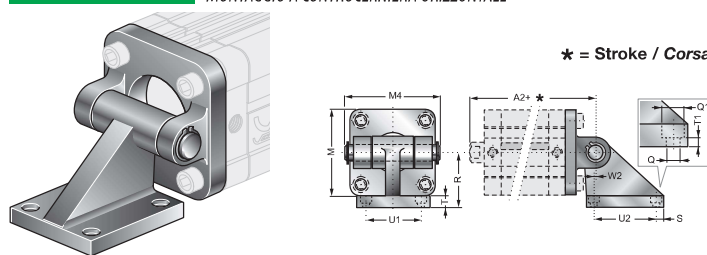
* = Stroke / Corsa



Ø	A2	ØJ ^{H9}	K2	M	V1	V2	W	Z	Front code - Cod. ant.	Rear code - Cod. post.
32	73	10	15	45	26	45	22	11	XCFA/32	XCF/32
40	77	12	18	52	28	52	25	13	XCFA/40	XCF/40
50	80	12	19	65	32	60	27	13	XCFA/50	XCF/50
63	89	16	24	75	40	70	32	17	XCFA/63	XCF/63
80	100	16	26	95	50	90	36	17	XCFA/80	XCF/80
100	118	20	31	115	60	110	41	21	XCFA/100	XCF/100

XASV/ .. REAR HINGE HORIZONTAL MOUNTING
MONTAGGIO A CONTROCERNIERA ORIZZONTALE

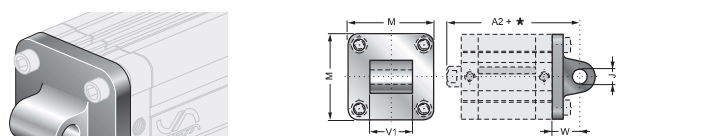
* = Stroke / Corsa



Ø	A2	M	M4	ØQ	ØQ1	R	S	T	T1	U1	U2	W2	Code - Codice
32	73	45	54	7	11	32	8	10	5	32,5	32,5	0	XASV/32
40	77	52	63	7	11	36	8,5	10	5	38	38	0	XASV/40
50	80	65	71	9	15	45	10	12	5	46,5	46,5	0	XASV/50
63	89	75	81	9	15	50	10	12	5	56,5	56,5	0	XASV/63
80	100	95	101	11	18	63	12,5	14	6	72	72	0	XASV/80
100	118	115	123	11	18	73	13	16	6	89	89	0	XASV/100

XCM/ .. CLEVIS (MALE) MOUNTING
MONTAGGIO A CONTROCERNIERA MASCHIO

* = Stroke / Corsa

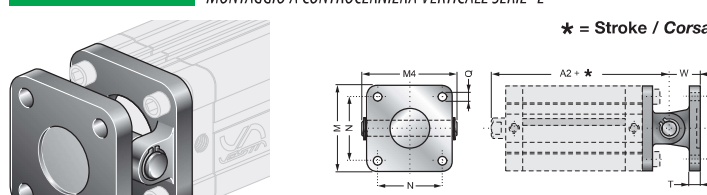


REF. ISO 15552

Ø	A2	ØJ ^{H7}	M	V1	W	Code - Codice
32	73	10	47	26	22	XCM/32
40	77	12	54	28	25	XCM/40
50	80	12	66	32	27	XCM/50
63	89	16	78	40	32	XCM/63
80	100	16	98	50	36	XCM/80
100	118	20	115	60	41	XCM/100

XANL/ .. REAR HINGE VERTICAL MOUNTING "L" SERIES
MONTAGGIO A CONTROCERNIERA VERTICALE SERIE "L"

* = Stroke / Corsa



Ø	A2	M	M4	N	ØQ	T	W	Code - Codice
32	73	45	54	32,5	7	10	22	XANL/32
40	77	52	63	38	7	10	25	XANL/40
50	80	65	71	46,5	9	12	27	XANL/50
63	89	75	81	56,5	9	12	32	XANL/63
80	100	95	101	72	11	16	36	XANL/80
100	118	115	123	89	11	16	41	XANL/100

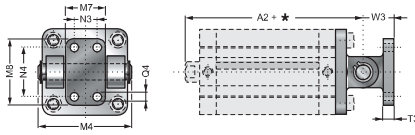
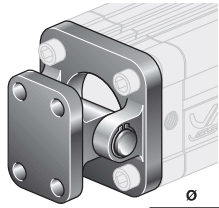


FIXING ACCESSORIES FOR ISO 21287 CYLINDERS / ACCESSORI DI FISSAGGIO PER CILINDRI ISO 21287

Note: the fixing screws are not included in the supply of the fittings / le viti di fissaggio non sono comprese nella fornitura degli accessori.

XANN/ ..

REAR HINGE VERTICAL MOUNTING "N" SERIES
MONTAGGIO A CONTROCERNIERA VERTICALE SERIE "N"

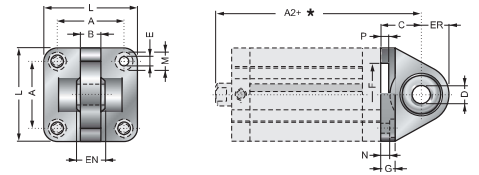
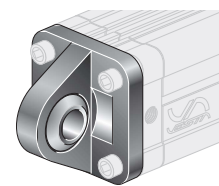


* = Stroke / Corsa

Ø	A2	M4	M7	M8	N3	N4	ØQ4	T3	W3	Code - Codice
32	73	54	25	40	-	28	7	8	18	XANN/32
40	77	63	28	52	16	38	9	10	26	XANN/40
50	80	71	32	52	16	38	9	10	26	XANN/50
63	89	81	40	75	25	54	11	12	34	XANN/63
80	100	101	50	75	25	54	11	12	34	XANN/80
100	118	123	60	115	32	90	14	16	41	XANN/100

XCM-SN-AC/ ..

CLEVIS (MALE) WITH ROD EYE
CERNIERA MASCHIO CON SNODO



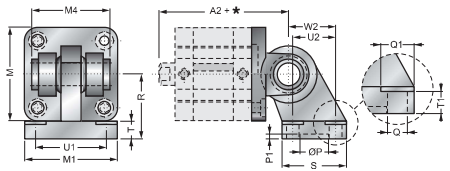
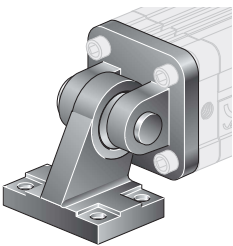
* = Stroke / Corsa

STEEL / ACCIAIO

Ø	A2	A	B	C	ØD	EN	ER	F	G	E	L	M	N	P	Code - Codice
32	73	32,5	10,5	22	10	14	15	30	10	6,6	45	10,5	5,5	5	XCM-SN-AC/32
40	77	38	12	25	12	16	18	35	10	6,6	55	11	5,5	5	XCM-SN-AC/40
50	80	46,5	15	27	16	21	20	40	10	9	65	15	6,5	5	XCM-SN-AC/50
63	89	56,5	15	32	16	21	23	45	12	9	75	15	6,5	5	XCM-SN-AC/63
80	100	72	18	36	20	25	27	45	14	11	95	18	10	5	XCM-SN-AC/80
100	118	89	18	41	20	25	30	55	16	11	115	18	10	5	XCM-SN-AC/100

XAS-SN/ ..

REAR HINGE MOUNTING WITH NARROW ROD EYE
MONTAGGIO A CONTROCERNIERA SNODATA STRETTA

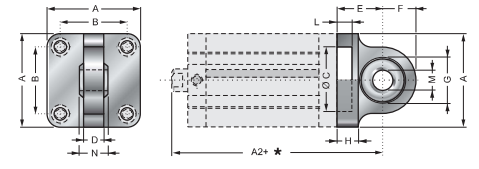
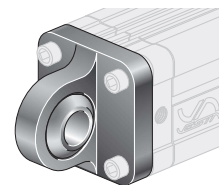


* = Stroke / Corsa

Ø	A2	M	M1	M4	ØP	P1	ØQ	ØQ1	R	S	T	T1	U1	U2	W2	Code - Codice
32	73	45	51	41	20	3	6,6	11	32	31	10	8,5	38	18	21	XAS-SN/32
40	77	52	54	48	20	3	6,6	11	36	35	10	8,5	41	22	24	XAS-SN/40
50	80	65	65	54	20	3	9	15	45	45	12	10,5	50	30	33	XAS-SN/50
63	89	75	67	60	20	3	9	15	50	50	12	10,5	52	35	37	XAS-SN/63
80	100	95	86	75	20	3	11	18	63	60	14	11,5	66	40	47	XAS-SN/80
100	118	115	96	85	20	3	11	18	71	70	15	12,5	76	50	55	XAS-SN/100

XCM-SN-AL/ ..

CLEVIS (MALE) WITH ROD EYE
CERNIERA MASCHIO CON SNODO



* = Stroke / Corsa

ALUMINIUM ALLOY / LEGA DI ALLUMINIO

Ø	A2	A	B	C	D	E	F	H	L	ØM	N	Code - Codice
32	73	45	32,5	30	10,5	22	16	9	5	10	14	XCM-SN-AL/32
40	77	52	38	35	12	25	19	9	5	12	16	XCM-SN-AL/40
50	80	65	46,5	40	15	27	21	11	5	16	21	XCM-SN-AL/50
63	89	75	56,5	45	15	32	24	11	5	16	21	XCM-SN-AL/63
80	100	95	72	45	18	36	28,5	14	5	20	25	XCM-SN-AL/80
100	118	115	89	55	18	41	30	14	5	20	25	XCM-SN-AL/100

PISTON-ROD FIXING ACCESSORIES FOR ISO 21287 CYLINDERS SEE PAGE A-26

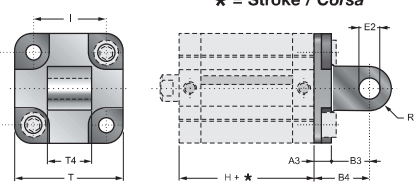
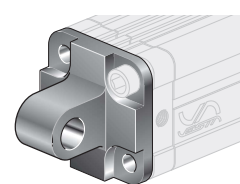
ACCESSORI DI FISSAGGIO ALLO STELO PER CILINDRI ISO 21287 VEDI PAGINA A-26

FIXING ACCESSORIES FOR UNITOP CYLINDERS / ACCESSORI DI FISSAGGIO PER CILINDRI UNITOP

Note: the fixing screws are not included in the supply of the fittings / le viti di fissaggio non sono comprese nella fornitura degli accessori.

SKCM/ ..

MALE CLEVIS MOUNTING
MONTAGGIO A CERNIERA MASCHIO



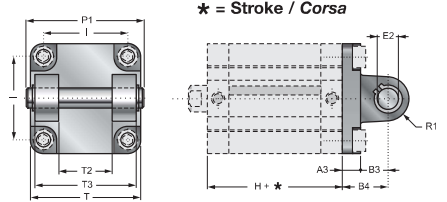
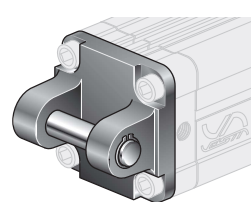
* = Stroke / Corsa

Ø	A3	B3	B4	E2	H	I	R1	T	T4	Code - Codice
16	6	10	16	6	38	18	6	27	12	SKCM/16
20	6	14	20	8	38	22	8	34	16	SKCM/20
25	6	14	20	8	39,5	26	8	38	16	SKCM/25

H = See previous pages
Vedi pagine precedenti

SKCF/ ..

FEMALE CLEVIS MOUNTING
MONTAGGIO A CERNIERA FEMMINA



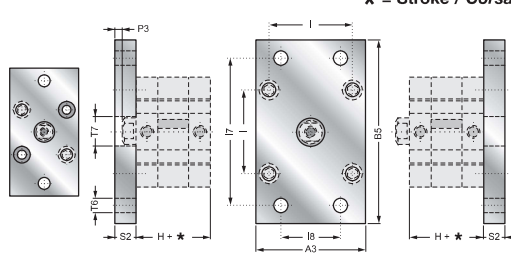
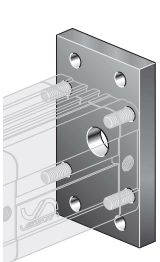
* = Stroke / Corsa

Ø	A3	B3	B4	E2	H	I	P1	R1	T	T2	T3	Code - Codice
32	9	13	22	10	44,5	32	53	10	48	26	45	SKCF/32
40	9	16	25	12	45,5	42	60	12,5	58	28	52	SKCF/40
50	11	16	27	12	45,5	50	68	12,5	66	32	60	SKCF/50
63	11	21	32	16	50	62	78	15	83	40	70	SKCF/63
80	13	23	36	16	56	82	98	15	102	50	90	SKCF/80
100	15	26	41	20	66,5	103	118	20	123	60	110	SKCF/100

H = See previous pages
Vedi pagine precedenti

SKFL/ ..

FLANGE MOUNTING
MONTAGGIO A FLANGIA



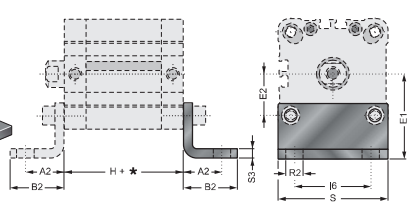
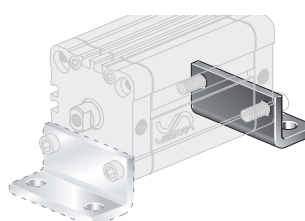
* = Stroke / Corsa

Ø	A3	B5	H	I	I7	I8	P3	S2	T6	T7	Code - Codice
16	29	55	38	18	43	-	5,5	10	5,5	10	SKFL/16
20	36	70	38	22	55	-	5,5	10	6,5	12	SKFL/20
25	40	76	39,5	26	60	-	4,5	10	6,5	12	SKFL/25
32	50	80	44,5	32	65	32	4	10	7	14	SKFL/32
40	60	102	45,5	42	82	36	3,5	10	9	14	SKFL/40
50	68	110	45,5	50	90	45	4,5	12	9	18	SKFL/50
63	87	130	50	62	110	50	7,5	15	9	18	SKFL/63
80	107	160	56	82	135	63	7	15	12	23	SKFL/80
100	128	190	66,5	103	163	75	5	15	14	28	SKFL/100

H = See previous pages
Vedi pagine precedenti

SKP/ ..

FOOT MOUNTING
MONTAGGIO A PIEDINI



* = Stroke / Corsa

Ø	A2	B2	E1	E2	H	I6	R2	S	S3	Code - Codice
16	13	17,5	22	9	38	18	5,5	30	3	SKP/16
20	16	22	27	11	38	22	6,5	36	4	SKP/20
25	16	22	30	13	39,5	26	6,5	40	4	SKP/25
32	18	26	32	16	44,5	32	6,5	50	5	SKP/32
40	20	28	42,5	21	45,5	42	9	60	5	SKP/40
50	24	32	47,5	25	45,5	50	9	68	6	SKP/50
63	27	39	59,5	31	50	62	11	84	6	SKP/63
80	30	42	65,5	41	56	82	11	102	8	SKP/80
100	33	45	78	51,5	66,5	103	13,5	123	8	SKP/100

H = See previous pages
Vedi pagine precedenti



SEALS KIT - KIT GUARNIZIONI DI RICAMBIO

..... - SG

Seals kit code = **Cylinder code** + **Bore** + **Versions** + **- SG**: (The kit includes all seals).

Codice del kit = **Codice del cilindro** + **Allesaggio** + **Versioni** + **- SG**: (Il kit comprende tutte le guarnizioni necessarie).

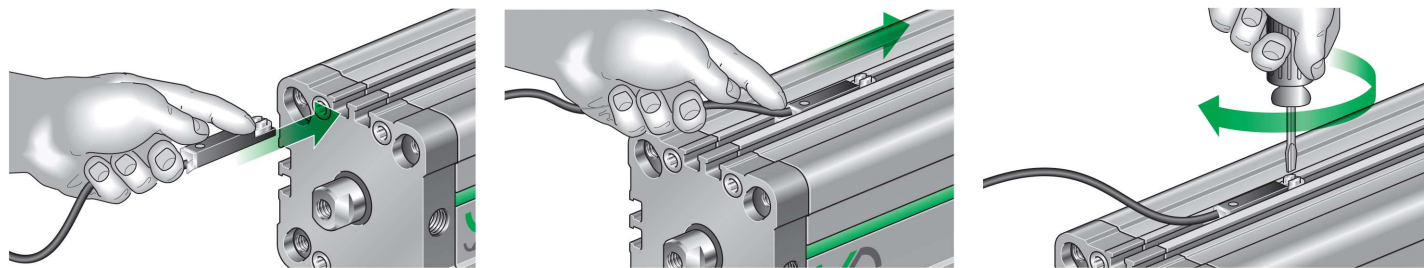
Example / Esempio: **NSK 40 CNP - SG**

MAGNETIC SWITCHES FOR NSK CYLINDERS / FINECORSA MAGNETICI PER CILINDRI NSK

VNCR2 VNPR2 VNCE3 VNPE3

Characteristic magnetic switches see **GENERAL CATALOGUE - Pag. A-19; A-33.**
 Caratteristiche finecorsa magnetico vedi **CATALOGO GENERALE - Pag. A-19; A-33.**

MAGNETIC SWITCH POSITIONING / POSIZIONAMENTO DEI FINECORSA MAGNETICI



SHORT STROKE CYLINDERS CILINDRI A CORSA BREVE SERIE SH

SH □ - □ □ - □ □ □ - □ □ □

D Double acting
Cilindro doppio effetto

S Single acting
Cilindro semplice effetto

DM Double effect magnetic
Doppio effetto magnetico

SM Simple effect magnetic
Semplice effetto magnetico

Stroke / Corsa
(mm):

VS Viton rod seal
Guarnizione dello stelo in Viton

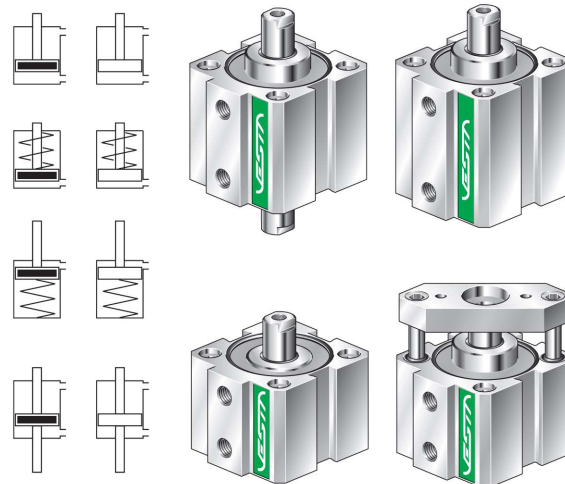
VV Viton all seals
Tutte le guarnizioni in Viton

P Through rod cylinder
Cilindro stelo passante

AR Non rotating
Cilindro antirotazione

Bore / Allesaggio (mm):

Ø12 12	Ø63 63
Ø16 16	Ø80 80
Ø20 20	Ø100 ... 100
Ø25 25	Ø125 ... 125
Ø32 32	Ø160 ... 160
Ø40 40	Ø200 ... 200
Ø50 50	



Features of reed switches see:
 Caratteristiche finecorsa magnetici: **Pag. A-38**

Piston rod	Stainless steel X10 Cr Ni S 18-09 (Ø125÷200 X 20 Cr 13)
Barrel	Anodized profiled aluminium tube.
Seals	NBR rubber and polyurethane.
Cushioning	Mechanical buffers.

Ambient temperature range	-20 °C ÷ +60 °C.
Temperature range of medium	0 °C ÷ +30 °C.
Lubrication	Not required.
Medium	Filtered air.
Max operating pressure	10 bar.

TECHNICAL FEATURES

Stelo	Acciaio inox X10 Cr Ni S 18-09 (Ø125÷200 X 20 Cr 13)
Camicia	Tubo profilato ed anodizzato d' alluminio.
Guarnizioni	NBR e poliuretano.
Ammortizzatori	Smorzatore meccanici d' urto.

Temperatura ambiente	-20 °C ÷ +60 °C.
Temperatura fluido	0 °C ÷ +30 °C.
Lubrificazione	Non necessaria.
Fluido	Aria filtrata.
Pressione max d'esercizio	10 bar.

CARATTERISTICHE TECNICHE