

December 19, 2022

Attention: Jiri Sostok
ABO VALVES SRO
DALIMILOVA 285/54
OLOMOUC, 779 00

The design submission, Tracking Number 2022-04757, Web Portal Number 2022-S1801, originally received on August 23, 2022 was surveyed and accepted for registration as follows:

CRN : 0C15997.2 **Accepted on:** December 19, 2022
Reg Type: ADDITION TO ACC. FITTING **Expiry Date:** August 07, 2025
Drawing No. : 900_ASME B16.34 Sheet 1 Rev 1/Ind B & Sheet 2 Rev 2/Ind C
Fitting type: Concentric Butterfly Valves Series 900

Description	MAWP	Design Temperature	MDMT
Internal Pressure	1600kPa	38 °C	-28 °C
Internal Pressure	1370kPa	150 °C	-28 °C

The registration is conditional on your compliance with the following notes:

- The scope of this registration is the addition of the following valves to CRN 0C15997.2: Concentric butterfly valves, Series 900, Class 150, Sizes DN 32 to DN 600, materials A216-WCB, A352-LCC, and A351-CF8M.
- As indicated the AB-351 Declaration of Conformity form and submitted documentation the codes of construction are ASME B16.34 and B16.5.
- This submission has been accepted for registration based on the understanding that all valves will be designed, fabricated, and tested in compliance with ASME B16.34.
- It is our understanding that the fittings included in the scope of this registration that are subject to the Safety Codes Act shall comply with the requirements of the code of construction on the AB-351 Declaration of Conformity form as supported by the attached data which identifies the dimensions, materials of construction, pressure/temperature ratings and the basis for such ratings, and the identification marking of the fittings.
- Registration is valid only for fittings fabricated at the location(s) covered by the QC certificate attached to the accepted AB-351 Declaration of Conformity form. This registration is valid only until the indicated expiry date and only if the Manufacturer maintains a valid QMS approved by an acceptable third-party agency, and maintains a valid Certification of Authorization Permit if required by the jurisdiction where manufacturing takes place. Should approval of the QMS lapse before the indicated expiry date, this registration shall become void.

An invoice covering survey and registration fees will be forwarded from our Revenue Accounts.

If you have any question don't hesitate to contact me by phone at (780) 433-0281 ext 3303 or fax (780) 437-7787 or e-mail Rudolf@absa.ca.

Sincerely,



RUDOLF, KEITH, P. Eng.
DOP Cert. No. D00008862

(Show facsimile of logo or trademark, as it will appear on the fitting as evidence of certification)



DECLARATION OF CONFORMITY
(Sample Form)
REGISTRATION OF FITTINGS

2022-04757
ABSA
SAFETY CODES ACT - PROVINCE OF ALBERTA
ACCEPTED: OC15997. 2
See acceptance letter for conditions of registration.
Date: 2022-12-19 By: Keith Rudolf
KEITH RUDOLF, P. Eng
DOP: D0008862

This stamp and signature have been affixed electronically to this registered design as required by Section 20(1) of the Pressure Equipment Safety Regulation, in accordance with the Electronic Transactions Act.

Declaration No.: (document nr. as issued by the manufacturer)	220921	Revision:	3
---	--------	------------------	---

Manufacturer	(Name and Address) ABO valve s.r.o., Dalimilova 285/54 street, Olomouc city, postal code 78335, Czech Republic
---------------------	---

Table 1 Scope of Fitting Designs

Item No.	Type / Model	Product Description	Material of Construction	MDMT	Rated Pressure		References: Catalog (pages) or Drawing(s)
					At Ambient Temperature	At Maximum Temperature	
1	900	butterfly valve	see attached drawings	-28 °C	600-1600 kPag	600-1370 kPag at +150 °C	drawings attached to this declaration

Table 2 Codes, Standards, Guidelines, and Other Applicable Documents

Item No.	Title of Code(s), Standard(s), Guideline(s), or Other Applicable Document(s)	Edition / Revision	Item No.	Title of Code(s), Standard(s), Guideline(s), or Other Applicable Document(s)	Edition / Revision
1	ASME B16.34	2020	4		
2	ASME B16.5	2020	5		

Table 3 Quality Program Verification and Manufacturing Sites

Item No.	Location(s) Plant Name and Address / Site(s)	Quality Program Certificate Number	Expiry Date	Verifying Organization
1	ABO valve s.r.o.	AT-05209/0	2025-06-14	Quality Austria
2		19-BP3641853	2024-03-13	ABS
3				

A copy of the Quality Certificate from each manufacturing site must be included.

Remarks	(other relevant information)
----------------	------------------------------

As a senior official of the manufacturer, having responsibility for the conformity and regulatory compliance of the fitting, I hereby declare that the statements made in this declaration of conformity are true and accurate.

I also declare that a conformity assessment has been completed to the extent necessary for validation and verification, and declare that the fitting design and construction are in conformity with the requirements of CSA B51, the applicable codes, and standards and other applicable documents as listed in table 2 of this document.

I further declare that there is a process in place for retention, custody, maintenance, availability, and control of this declaration of conformity, for the duration of a valid Canadian Registration Number and no less than 10 years from the issuance of this declaration of conformity, for the fittings covered by this declaration.

Signed for and on behalf of ABO valve s.r.o. in the Olomouc of Czech Republic
(Manufacturer) (City) (State / Province, Country)

Dimitry Barishev technical director
(Name, please print) (Function or Title)

ABO valve, s.r.o.
(Signature) (Company Name)
Dalimilova 285/54
78335 OLOMOUČ
CZECH REPUBLIC

19/12/2022
(Date)

STATUTORY DECLARATION
Registration of Fittings
Single or Multiple Fitting Designs within one Fitting Category



I, Mr. Jiri Sostok, _____ certification and normalization dpt.
(name of applicant) (position title) (must be in a position of authority)

of _____ ABO valve ,s.r.o.
(name of manufacturer)

located at _____ Olomouc city, Dalimilova 285/54 street, postal code 78335,
Czech Republic

do solemnly declare that the fittings listed hereunder, which are subject to the Safety Codes Act (select only one)

comply with the requirements of ASME B16.5, ASME B16.34, which specifies the dimensions, (title of recognized North American Standard) materials of construction, pressure/temperature ratings and identification marking of the fittings, or

are not covered by the provisions of a recognized North American standard and are therefore (title of code of construction or other applicable document) attached data which identifies the dimensions, materials of construction, pressure/temperature ratings and the basis for such ratings, and the identification marking of the fittings.

I further declare that the manufacture of these fittings is controlled by a quality control program which has been verified as described in the below Table as being suitable for the manufacturing of these fittings to the stated standard, regulation, code, guideline or other applicable document. The fittings covered by the declaration for which I seek registration are as provided in the Supplementary Sheet(s) attached.

Quality Program Verification and Manufacturing Sites

A copy of the Quality Certificate from each manufacturing site must be included

Item #	Product Description, Model or Series	Quality Program	Scope of Certification	Expiry Date	Verifying Organization	Location(s) Plant Name and address
1.	Butterfly valves series 900	ISO 9001:2015 19-BP3641853	Quality management systems Manufacturing assessment	2025-06-14 2024-03-13	Quality Austria ABS	ABO valve,s.r.o. Dalimilova 285/54 street Olomouc city postal code 78335 Czech Republic

Tracking #: _____

In support of this application, the following information, calculations and/or test data are attached:

Submitted on CRN portal

Dimitry Barishev, technical director (Signature of the Declarer) [Signature] ABO valve, s.r.o. Dalimilova 285/54 783 35 OLOMOUC CZECH REPUBLIC 19/12/2022 (Date)

DECLARED before me at _____ in the _____ of _____ (city) (province, territory, or state)

this _____ day of _____, _____ (Month) (Year)

(print) _____ (a Commissioner of Oaths or Notary Public)

(sign) _____ (a Commissioner of Oaths or Notary Public)

_____ (expiry date (mm/dd/yy))

Commissioner of Oaths / Notary Public in and for: _____ (province, territory, or state)

For ABSA Office Use Only:

NOTES: _____

To the best of my knowledge and belief, the application meets the requirements of the Safety Codes Act and CSA Standard B51, Part 1, Clause 4.2, and is accepted for registration in Category _____. CRN: _____ Registered Date: _____ Expiry Date: _____ Signature: _____ (Signature of the Administrator/SCO) The information you provide is necessary only for the administration of the programs as required by the Alberta Safety Codes Act and Regulations in the Pressure Equipment Discipline

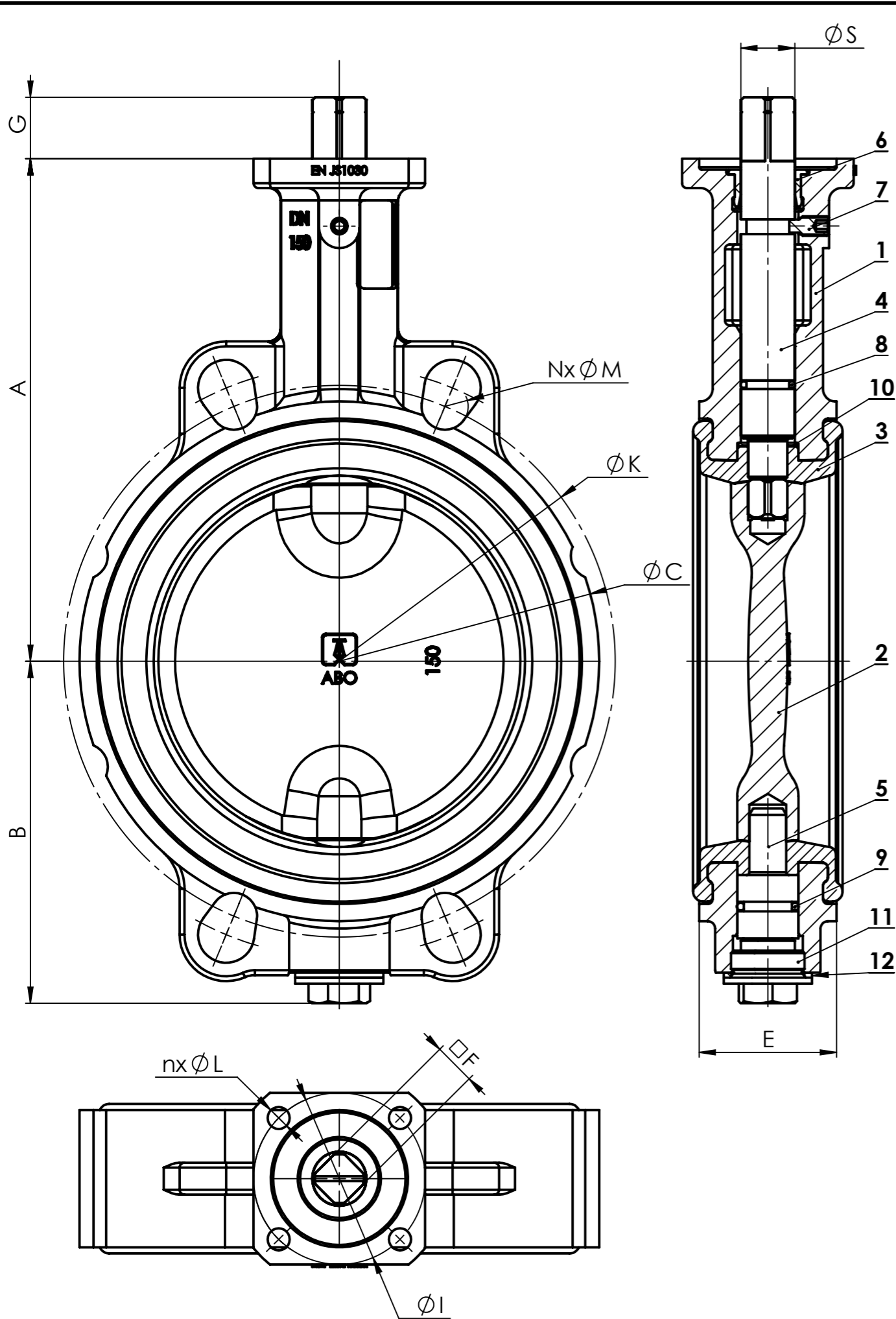
Table 1 Scope of Fitting Designs**

Item #	Primary Pressure Bearing / Retaining Component	Material of Construction	Port Connections and Size Range	MDMT	Rated Pressure		Pressure Class(es) / Schedule(s)	Design Code(s) of Construction	Reference Catalogue (pages) or Drawing(s)
					At Ambient Temperature	At Maximum Temperature +150 °C			
1	Butterfly valve series 900	see attached drawings	DN 32 – DN 600	-28 °C (-20° F)	600-1600 kPag	1370 kPag	Class 150	900	drawings attached to this declaration

Table 2 Additional Scope Information

List/Attach Additional Detail and References (Product Configurations, Options, Illustrations, etc.)
Example: Series X Options

** For additional alternatives of Table 1, refer to Form AB-41a, Guide for Completing Form AB-41



DN	NPS	A	B	C	G	E	F	S	ØI	nxØL	ISO 5211	PN10		PN16		ANSI150	
											FLANGE TYPE	ØK	NxØM	ØK	NxØM	ØK	NxØM
32	1 1/4"	136	54	78	25	33	14	16	50	4x7	F05/F07	100	4x18	100	4x18	89	4x15,9
40	1 1/2"	136	54	78	25	33	14	16	50	4x7	F05/F07	110	4x18	110	4x18	98,4	4x15,9
50	2"	146	64	96	25	43	14	16	50	4x7	F05	125	4x18	125	4x18	120,6	4x19
65	2 1/2"	154	72	113	25	46	14	16	50	4x7	F05	145	4x18	145	4x18	139,7	4x19
80	3"	163	89	128	25	46	14	16	50	4x7	F05	160	8x18	160	8x18	152,4	4x19
100	4"	173	105	150	25	52	14	16	50	4x7	F05	180	8x18	180	8x18	190,5	8x19
125	5"	193	119	184	25	56	17	22	70	4x9	F07	210	8x18	210	8x18	215,9	8x22,2
150	6"	205	130	212	25	56	17	22	70	4x9	F07	240	8x22	240	8x22	241,3	8x22,2
200	8"	234	166	268	25	60	17	22	70	4x9	F07	295	8x22	295	12x22	298,4	8x22,2
250	10"	270	202	320	30	68	22	28	102	4x11	F10	350	12x22	355	12x26	362	12x25,4
300	12"	310	237	378	30	78	22	28	102	4x11	F10	400	12x22	410	12x26	431,8	12x25,4
350	14"	325	271	435	36	78	27	36	125	4x14	F12	460	16x22	470	16x26	476,2	12x28,6
400	16"	365	314	488	36	102	27	36	140	4x18	F14	515	16x26	525	16x30	539,8	16x28,6

2022-04757

ABSA

SAFETY CODES ACT - PROVINCE OF ALBERTA

ACCEPTED: OC15997. 2

See acceptance letter for conditions of registration.

Date: 2022-12-19 By: *Keith Rudolf*

KEITH RUDOLF, P. Eng
DOP: D00008862

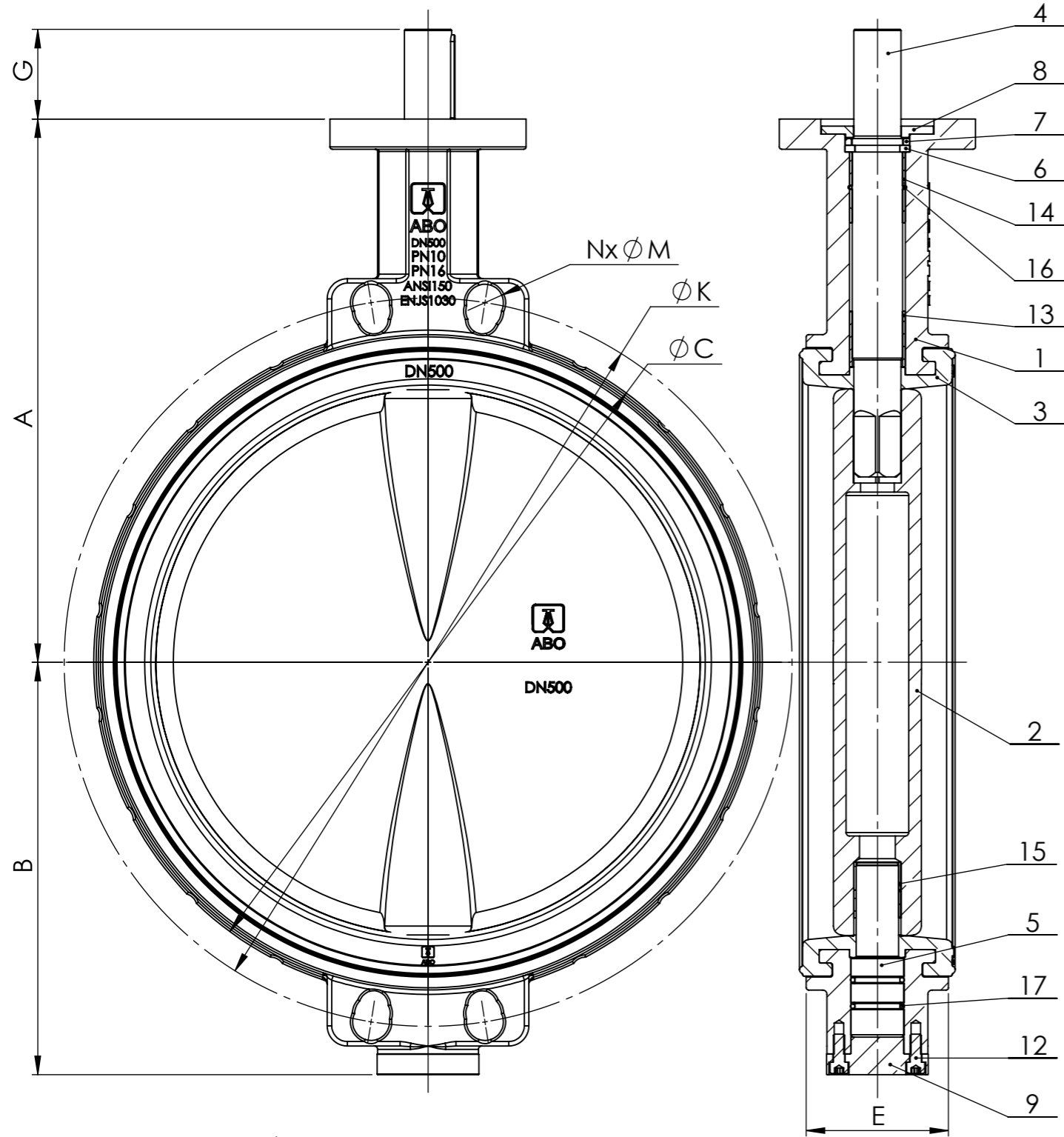
This stamp and signature have been affixed electronically to this registered design as required by Section 20(1) of the Pressure Equipment Safety Regulation, in accordance with the Electronic Transactions Act.

Testing according to API 598
Shell Test pressure: 24bar
Seat Test Pressure: 17.6 bar

Item	Part list	Note	Material	Qt.
12	SEAL		KLINGERSIL / COPPER	1
11	PLUG		A4	1
10	DISTANCE RING		A240 type 304	1
9	O-RING		Acc. to seat	1
8	O-RING		Acc. to seat	1
7	RETAINING SCREW		A2	1
6	BUSHING		Delrin	1
5	PIVOT		A276 type 420	1
4	SHAFT		A276 type 420	1
3	SEAT		NBR EPDM Carboxylic NBR Viton (FPM) Silicone steam (MVQ) Silicone (VMQ) Epichlorhydrin Hypalon (CSM) NBR 70-AG NBR conduct	1
2	DISC		Brass C38000 Aluminium bronze C63000 Stainless steel A351 type CF8 Ductile iron A536 type 60-14-18 Stainless steel A351 type CF8M	1
1	BODY		Carbon steel A216 type WCB Low carbon steel A352 type LCC Stainless steel A351 type CF8M	1

THIS DOCUMENT IS INTELLECTUAL PROPERTY OF ABO CORPORATION.
THIS DOCUMENT MAY NOT BE COPIED OR OTHERWISE DISTRIBUTED WITHOUT PRIOR WRITTEN CONSENT FROM ABO.

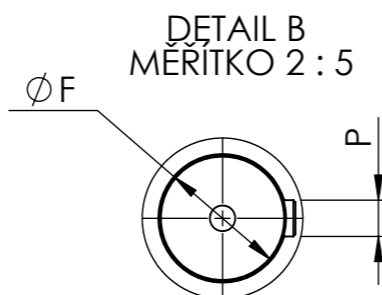
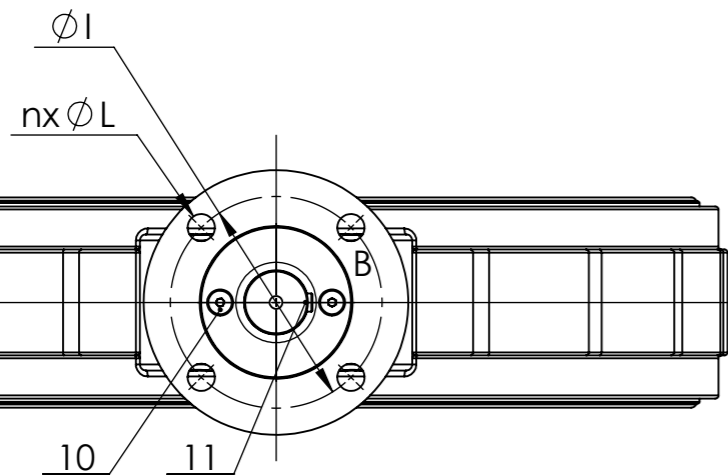
Dimension	Weight	Drawn Bartonek	Tolerance grade
Material		Checked	
Card	Note	Technologist	Scale 1:2 Format A3
Type s.900	Diameter Number DN32-400	Date 03.10.2022	Sheet 1 Sheets 1/2
Title	Drawing Number	Status rev.1	ABO valve, s.r.o.
BUTTERFLY VALVE	900_ASME B16.34		Ind. B



DN	NPS	A	B	C	G	E	ϕF	ϕI	nx ϕL	ISO 5211	PN10		PN16		ANSI150	
										FLANGE TYPE	ϕK	Nx ϕM	ϕK	Nx ϕM	ϕK	Nx ϕM
450	18"	375	330	544	80	114	38	140	4x18	F14	565	20x26	585	20x30	577,8	16x31,8
500	20"	485	368	590	80	127	42	140	4x18	F14	620	20x26	650	20x33	635	20x31,8
600	24"	565	464	695	80	154	50	165	4x23	F16	725	20x30	770	20x36	749,3	20x35

Testing according to API 598
 Shell Test pressure: 24bar
 Seat Test Pressure: 17.6 bar

Item	Part list	Note	Material	Qt.
17	O-RING		Acc. to seat	2
16	O-RING		Acc. to seat	1
15	SLEEVE		TP IGUS	2
14	SLEEVE		TP IGUS	2
13	SLEEVE		TP IGUS	1
12	BOLT		A4	2
11	KEY		A4	1
10	BOLT		A4	2
9	RING FLANGE		Acc. to body	1
8	RING FLANGE		Acc. to body	1
7	RING		A240 type 304	1
6	EXTERNAL CIRCLIP		A240 type 304	2
5	PIVOT		A276 type 420	1
4	SHAFT		A276 type 420	1
3	SEAT		NBR EPDM Carboxylic NBR Viton (FPM) Silicone steam (VMQ) Silicone (VMQ) Epichlorhydrin Hypalon (CSM) NBR 70-AG NBR conduct	1
2	DISC		Brass C38000 Aluminium bronze C63000 Stainless steel A351 type CF8 Ductile iron A536 type 60-14-18 Stainless steel A351 type CF8M	1
1	BODY		Carbon steel A216 type WCB Low carbon steel A352 type LCC Stainless steel A351 type CF8M	1



THIS DOCUMENT IS INTELLECTUAL PROPERTY OF ABO CORPORATION.
 THIS DOCUMENT MAY NOT BE COPIED OR OTHERWISE DISTRIBUTED WITHOUT PRIOR WRITTEN CONSENT FROM ABO.

Dimension	Weight	Drawn bartonek	Tolerance grade
Material		Checked	
Card	Note	Technologist	Scale 1:5 Format A3
Type s.900	Diameter Number DN450-600	Date 19.12.2022	Sheet 2 Sheets 2/2
Title		Status rev.2	ABO valve, s. r. o.
BUTTERFLY VALVE		Drawing Number	Ind. C
		900_ASME B16.34	