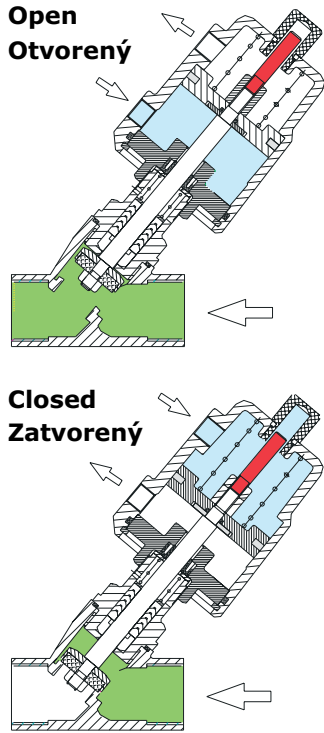
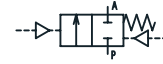
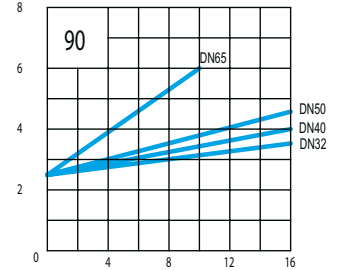
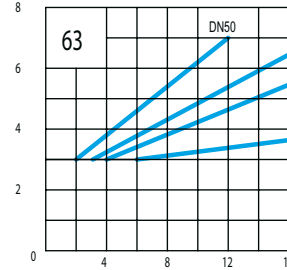
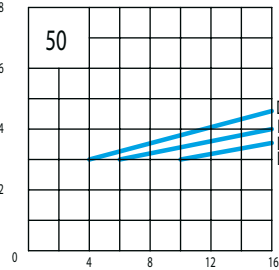
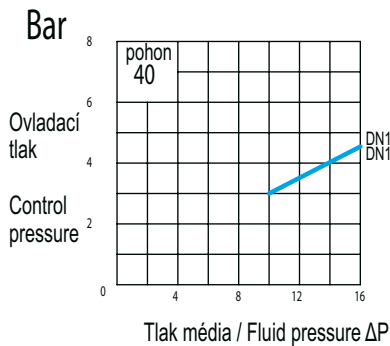


Dvojčinné, v základnej polohe uzavreté, zatváranie v smere prúdenia
 Double Acting, Normally Closed, Enter Above Seat



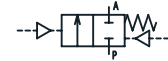
Typ Type	Svetlosť Size	Pripojenie Thread end	Sedlo Orifice	Kv (m ³ /h)	Pohon Actuator (mm)	ΔP (Bar)	Ovládací tlak Control Pressure (Bar)
2VP10DZ40	DN10	3/8"	13	3.8	40	0 - 16	3.0 - 4.5
2VP10DZ50					50		
2VP15DZ40	DN15	1/2"	13	4.7	40	0 - 16	3.0 - 4.5
2VP15DZ50					50		
2VP20DZ50	DN20	3/4"	18	9.5	50	0 - 16	3.0 - 4.0
2VP25DZ50	DN25	1"	24	18.1	50	0 - 16	3.0 - 4.5
2VP25DZ63-12					63		
2VP32DZ63-12	DN32	1 1/4"	31	23.1	63	0 - 16	3.0 - 5.5
2VP32DZ90-12					90		
2VP40DZ63-12	DN40	1 1/2"	35	32.9	63	0 - 16	3.0 - 6.5
2VP40DZ90-12					90		
2VP50DZ63-12	DN50	2"	45	52.8	63	0 - 12	3.0 - 7.0
2VP50DZ90-12					90		
2VP65DZ90-12	DN65	2 1/2"	61	82.6	90	0 - 10	2.5 - 6.0

Vhodné pre veľký tlakový spád. Možnosť uzavretia ventilu v prípade núdze.
 \ Suitable for high ΔP. The valve could be closed if there is an emergency. \

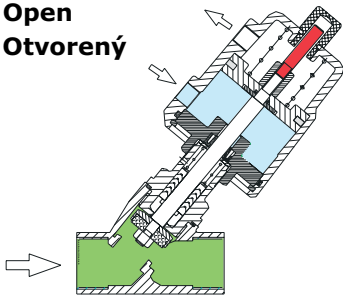


Bar

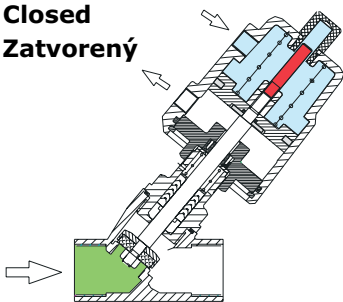
Dvojčinné, v základnej polohe uzavreté, zatváranie proti smeru prúdenia
 Double Acting, Normally Closed, Enter Below Seat



Open
Otvorený



Closed
Zatvorený

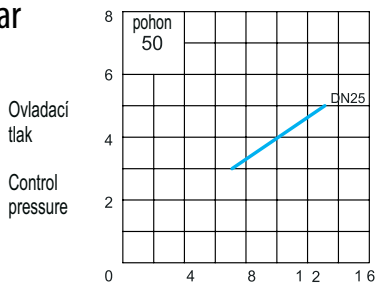


Typ Type	Svetlost' Size	Pripojenie Thread end	Sedlo Orifice	Kv (m ³ /h)	Pohon Actuator (mm)	ΔP (Bar)	Ovládací tlak Control Pressure (Bar)
2VP10DZ40	DN10	3/8"	13	3.8	40	0 - 16	≥ 3.0
2VP10DZ50					50	0 - 16	≥ 3.0
2VP15DZ40	DN15	1/2"	13	4.7	40	0 - 16	≥ 3.0
2VP15DZ50					50	0 - 16	≥ 3.0
2VP20DZ50	DN20	3/4"	18	9.5	50	0 - 16	≥ 3.0
2VP25DZ50	DN25	1"	24	18.1	50	0 - 13	3.0-5.0
2VP25DZ63-21					63	0 - 16	3.0-4.0
2VP32DZ63-21	DN32	1 1/4"	31	23.1	63	0 - 16	3.0-6.0
2VP32DZ90-21					90	0 - 16	2.5-4.0
2VP40DZ63-21	DN40	1 1/2"	35	32.9	63	0 - 16	3.0-7.0
2VP40DZ90-21					90	0 - 16	2.5-5.0
2VP50DZ63-21	DN50	2"	45	52.8	63	0 - 8	3.0-7.0
2VP50DZ90-21					90	0 - 16	2.5-6.0
2VP65DZ90-21	DN65	2 1/2"	61	82.6	90	0 - 11	2.5-7.0

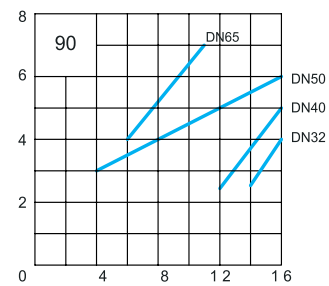
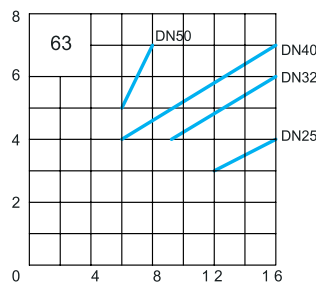
Tok prichádza pod sedlo na zamedzenie hydraulických rázov. Vhodné pre veľký tlakový spád.

\ Flow comes from below the seat to avoid water hammer. Suitable for high ΔP. \

Bar

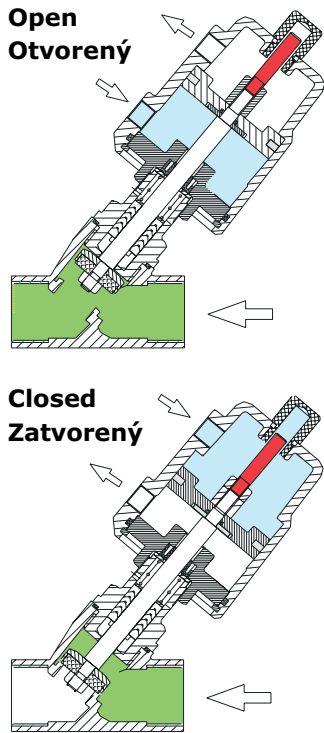
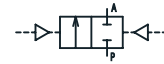


Tlak média / Fluid pressure ΔP



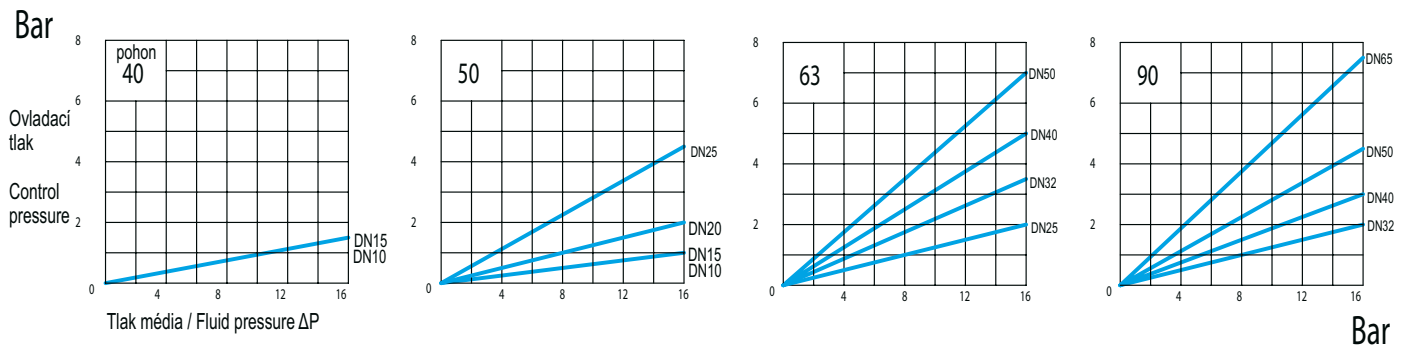
Bar

Dvojčinné bez pružiny, zatváranie v smere prúdenia
Double Acting, (No Spring), Enter Above Seat

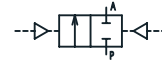


Typ Type	Svetlosť Size	Pripojenie Thread end	Sedlo Orifice	Kv (m ³ /h)	Pohon Actuator (mm)	ΔP (Bar)	Ovládací tlak Control Pressure (Bar)
2VP10D40	DN10	3/8"	13	3.8	40	0 - 16	0 - 1.5
2VP10D50					50		0 - 1.0
2VP15D40	DN15	1/2"	13	4.7	40	0 - 16	0 - 1.5
2VP15D50					50		0 - 1.0
2VP20D50	DN20	3/4"	18	9.5	50	0 - 16	0 - 2.0
2VP25D50	DN25	1"	24	18.1	50	0 - 16	0 - 4.5
2VP25D63-12					63		0 - 2.0
2VP32D63-12	DN32	1 1/4"	31	23.1	63	0 - 16	0 - 3.5
2VP32D90-12					90		0 - 2.0
2VP40D63-12	DN40	1 1/2"	35	32.9	63	0 - 16	0 - 5.0
2VP40D90-12					90		0 - 3.0
2VP50D63-12	DN50	2"	45	52.8	63	0 - 16	0 - 7.0
2VP50D90-12					90		0 - 4.5
2VP65D90-12	DN65	2 1/2"	61	82.6	90	0 - 16	0 - 7.5

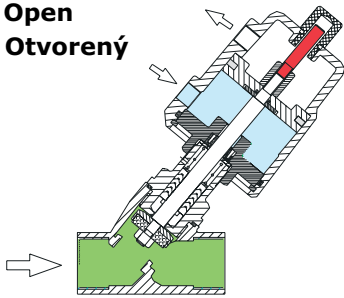
Vhodné pre nízky ovládací tlak.
 \ Suitable for low control pressure. \



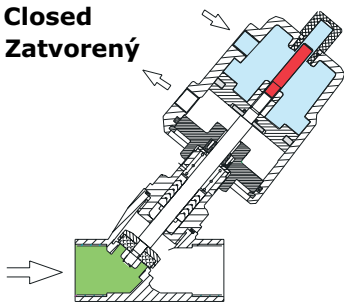
Dvojčinné bez pružiny, zatváranie proti smeru prúdenia
Double Acting, (No Spring), Enter Below Seat



Open
Otvorený



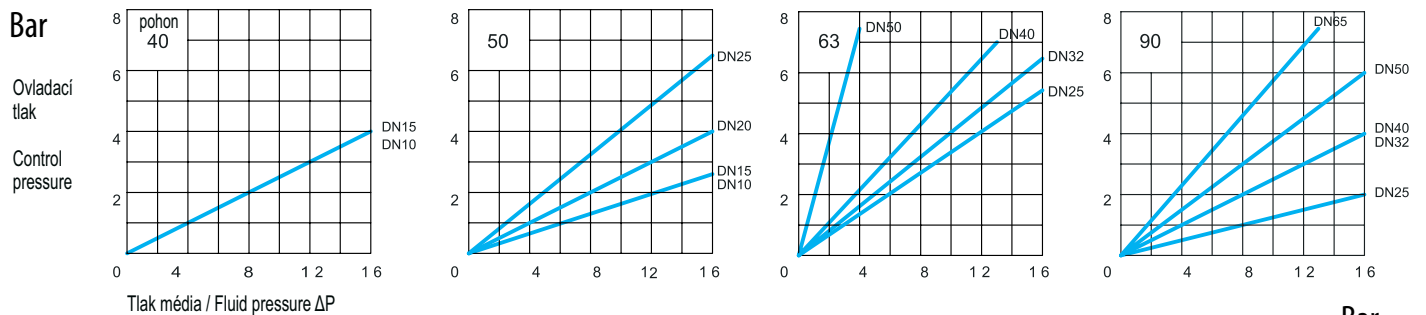
Closed
Zatvorený



Typ Type	Svetlosť Size	Pripojenie Thread end	Sedlo Orifice	Kv (m ³ /h)	Pohon Actuator (mm)	ΔP (Bar)	Ovládací tlak Control Pressure (Bar)
2VP10D40	DN10	3/8"	13	3.8	40	0 - 16	0 - 4.0
2VP10D50					50	0 - 16	0 - 2.5
2VP15D40	DN15	1/2"	13	4.7	40	0 - 16	0 - 4.0
2VP15D50					50	0 - 16	0 - 2.5
2VP20D50	DN20	3/4"	18	9.5	50	0 - 16	0 - 4.0
2VP25D50	DN25	1"	24	18.1	50	0 - 16	0 - 6.5
2VP25D63-21					63	0 - 16	0 - 5.5
2VP25D90-21					90	0 - 16	0 - 2.0
2VP32D63-21	DN32	1 1/4"	31	23.1	63	0 - 16	0 - 6.5
2VP32D90-21					90	0 - 16	0 - 4.0
2VP40D63-21	DN40	1 1/2"	35	32.9	63	0 - 13	0 - 7.0
2VP40D90-21					90	0 - 16	0 - 4.0
2VP50D63-21	DN50	2"	45	52.8	63	0 - 4.0	0 - 7.5
2VP50D90-21					90	0 - 16	0 - 6.0
2VP65D90-21	DN65	2 1/2"	61	82.6	90	0 - 13	0 - 7.5

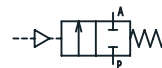
Tok prichádza pod sedlo na zamedzenie hydraulických rázov. Vhodné pre veľký tlakový spád.

\ Flow comes from below the seat to avoid water hammer. Suitable for high ΔP. \

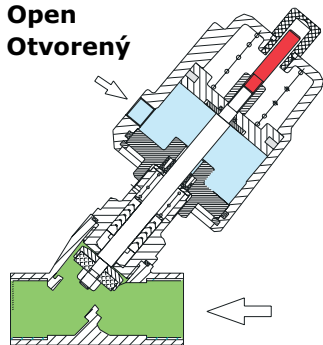


Bar

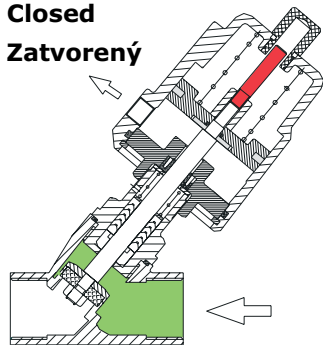
Jednočinné, v základnej polohe uzavreté, zatváranie v smere prúdenia
Single Acting, Normally Closed, Enter Above Seat



Open
Otvorený

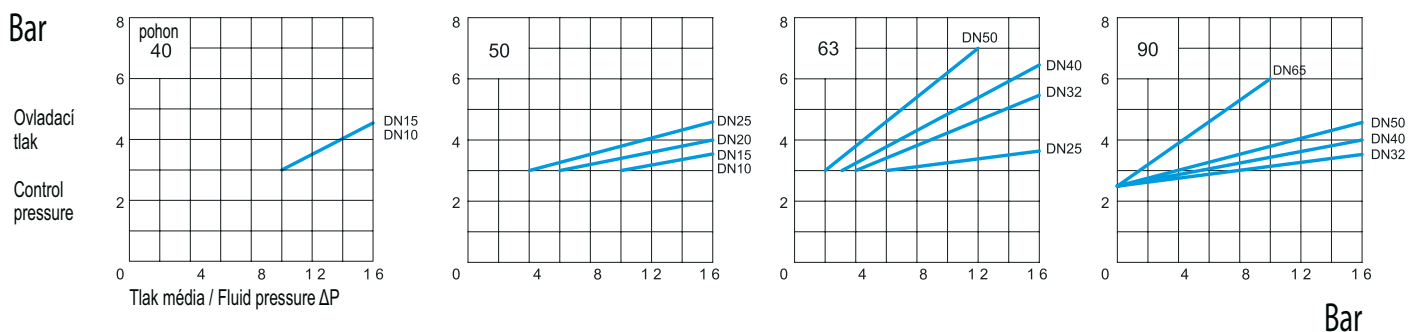


Closed
Zatvorený



Typ Type	Svetlosť Size	Pripojenie Thread end	Sedlo Orifice	Kv (m ³ /h)	Pohon Actuator (mm)	ΔP (Bar)	Ovládaci tlak Control Pressure (Bar)
2VP10Z40	DN10	3/8"	13	3.8	40	0 - 16	3.0 - 4.5
2VP10Z50					50		3.0 - 3.5
2VP15Z40	DN15	1/2"	13	4.7	40	0 - 16	3.0 - 4.5
2VP15Z50					50		3.0 - 3.5
2VP20Z50	DN20	3/4"	18	9.5	50	0 - 16	3.0 - 4.0
2VP25Z50	DN25	1"	24	18.1	50	0 - 16	3.0 - 4.5
2VP25Z63-12					63		3.0 - 3.5
2VP32Z63-12	DN32	1 1/4"	31	23.1	63	0 - 16	3.0 - 5.5
2VP32Z90-12					90		2.5 - 3.5
2VP40Z63-12	DN40	1 1/2"	35	32.9	63	0 - 16	3.0 - 6.5
2VP40Z90-12					90		2.5 - 4.0
2VP50Z63-12	DN50	2"	45	52.8	63	0 - 12	3.0 - 7.0
2VP50Z90-12					90		2.5 - 4.5
2VP65Z90-12	DN65	2 1/2"	61	82.6	90	0 - 10	2.5 - 6.0

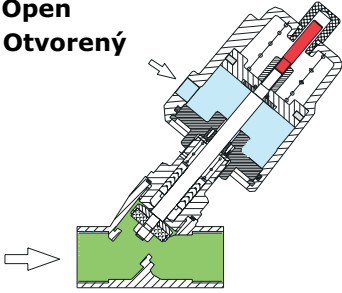
Vhodné pre stlačiteľné médiá ako vzduch, para a pre tekuté médiá.
Tok prichádza nad sedlo, čím napomáha zatvoreniu ventilu.
\\ Suitable for condensable media, such as air, steam and liquid media.
Flow comes from above seat helping to close the valve. \\



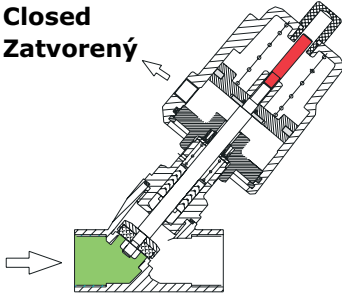
Jednočinné, v základnej polohe uzavreté, zatváranie proti smeru prúdenia
Single Acting, Normally Closed, Enter Below Seat



Open
Otvorený

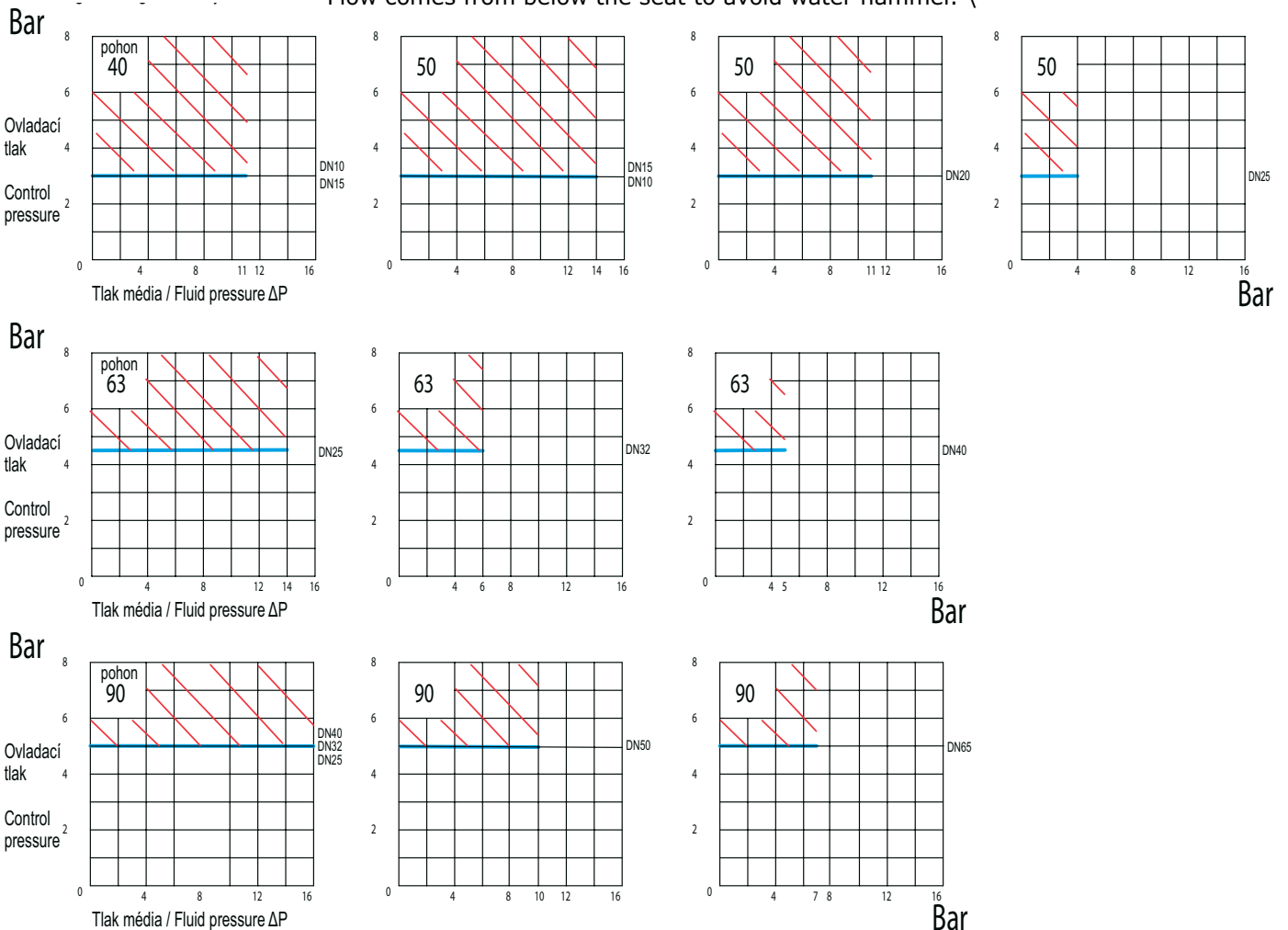


Closed
Zatvorený



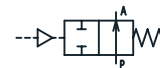
Typ Type	Svetlosť Size	Pripojenie Thread end	Sedlo Orifice	Kv (m ³ /h)	Pohon Actuator (mm)	ΔP (Bar)	Ovládací tlak Control Pressure (Bar)
2VP10Z40	DN10	3/8"	13	3.8	40	0 - 11	3.0
2VP10Z50					50	0 - 14	3.0
2VP15Z40	DN15	1/2"	13	4.7	40	0 - 11	3.0
2VP15Z50					50	0 - 14	3.0
2VP20Z50	DN20	3/4"	18	9.5	50	0 - 11	3.0
2VP25Z50	DN25	1"	24	18.1	50	0 - 4	3.0
2VP25Z63-21					63	0 - 14	4.5
2VP25Z90-21					90	0 - 16	5.0
2VP32Z63-21	DN32	1 1/4"	31	23.1	63	0 - 6	4.5
2VP32Z90-21					90	0 - 16	5.0
2VP40Z63-21	DN40	1 1/2"	35	32.9	63	0 - 5	4.5
2VP40Z90-21					90	0 - 16	5.0
2VP50Z90-21	DN50	2"	45	52.8	90	0 - 10	5.0
2VP65Z90-21	DN65	2 1/2"	61	82.6	90	0 - 7	5.0

Vhodné pre stlačiteľné médiá ako vzduch, para a pre tekuté médiá.
Tok prichádza pod sedlo na zamedzenie hydraulických rázov.
Suitable for condensable media, such as air, steam and liquid media.
Flow comes from below the seat to avoid water hammer.

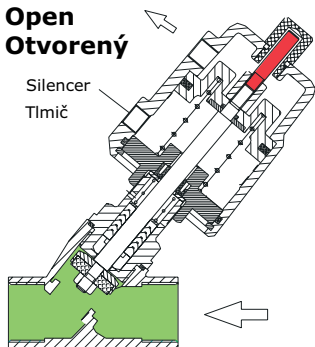


Uvedené hodnoty sú min. veľkosti ovládacieho tlaku pri danom tlakovom spáde. Hodnoty na tejto úrovni alebo vyššie spôsobia otvorenie NC ventilu resp. zatvorenie NO ventilu.
Values mentioned in the chart are minimum ratings for the control pressure at a given differential pressure - values at or above these ratings will make the valve close if NO - or open if NC types.

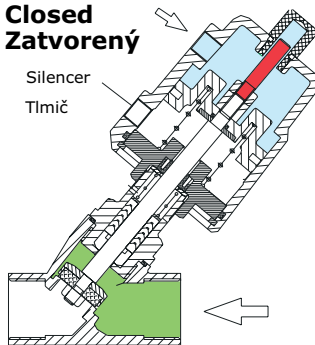
V základnej polohe otvorené, zatváranie v smere prúdenia
Normally Open, Enter Above Seat



Open
Otvorený



Closed
Zatvorený

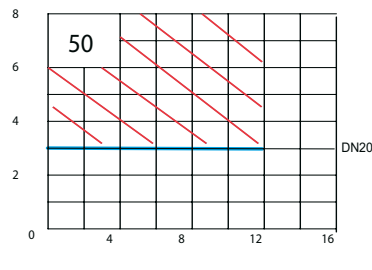
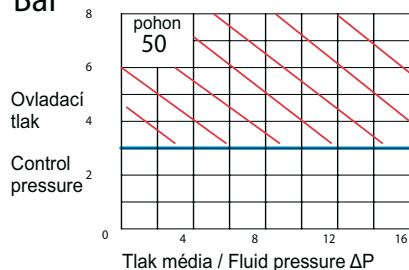


Typ Type	Svetlosť Size	Prípojenie Thread end	Sedlo Orifice	Kv (m ³ /h)	Pohon Actuator (mm)	ΔP (Bar)	Ovládací tlak Control Pressure (Bar)
2VP10050	DN10	3/8"	13	50 3.8	50	0 - 16	≥ 3.0
2VP15050	DN15	1/2"	13	4.7	50	0 - 16	≥ 3.0
2VP20050	DN20	3/4"	18	9.5	50	0 - 12	≥ 3.0
2VP25063-12	DN25	1"	24	18.1	63	0 - 16	≥ 4.5
2VP32063-12	DN32	1 1/4"	31	23.1	63	0 - 14	≥ 4.5
2VP40063-12	DN40	1 1/2"	35	32.9	63	0 - 14	≥ 4.5
2VP50063-12	DN50	2"	45	52.8	63	0 - 6	≥ 4.5

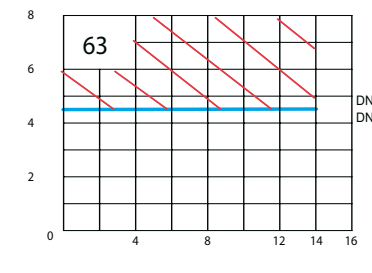
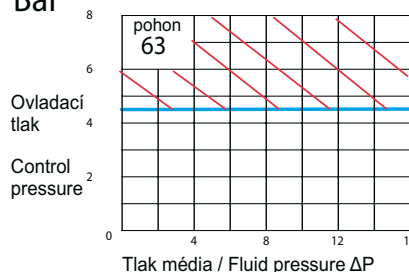
Vhodné pre dlhé zotrvanie v otvorenom stave. Po oddelení tlmiča možno zmeniť na dvojčinný ventil v základnej polohe otvorený.

\ Suitable for long time valve open demand. Taking off the silencer, the valve can be changed to a double acting normally open type. \

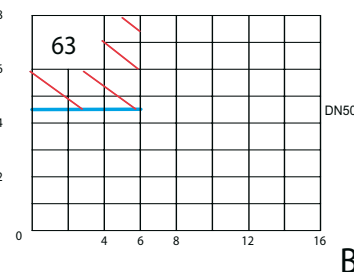
Bar



Bar



Bar

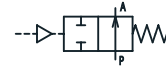


Bar

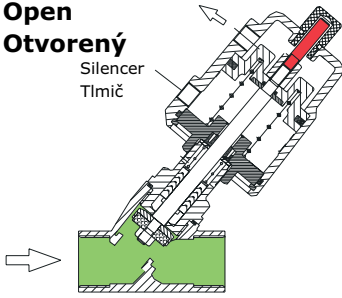
Uvedené hodnoty sú min. veľkosti ovládacieho tlaku pri danom tlakovom spáde. Hodnoty na tejto úrovni alebo vyššie spôsobia otvorenie NC ventilu resp. zatvorenie NO ventilu.

\ Values mentioned in the chart are minimum ratings for the control pressure at given differential pressure - values at or above these ratings will make the valve close if NO - or open if NC types. \

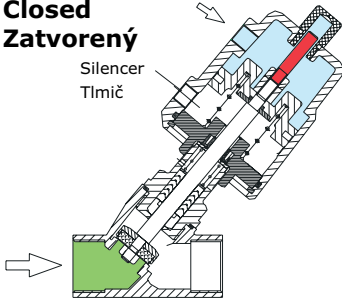
V základnej polohe otvorené, zatváranie proti smeru prúdenia
Normally Open, Enter Below Seat



Open
Otvorený



Closed
Zatvorený

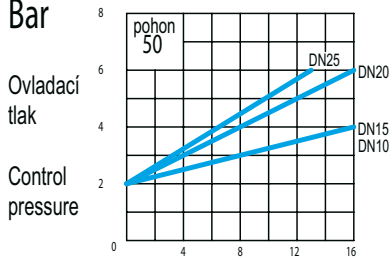


Typ Type	Svetlosť Size	Pripojenie Thread end	Sedlo Orifice	Kv (m ³ /h)	Pohon Actuator (mm)	ΔP (Bar)	Ovládaci tlak Control Pressure (Bar)
2VP10050	DN10	3/8"	13	3.8	50	0 - 16	2.0 - 4.0
2VP15050	DN15	1/2"	13	4.7	50	0 - 16	2.0 - 4.0
2VP20050	DN20	3/4"	18	9.5	50	0 - 16	2.0 - 6.0
2VP25050	DN25	1"	24	18.1	50	0 - 13	2.0 - 6.0
2VP25063-21					63	0 - 16	2.5 - 5.0
2VP32063-21	DN32	1 1/4"	31	23.1	63	0 - 13	2.5 - 6.0
2VP40063-21	DN40	1 1/2"	35	32.9	63	0 - 7	2.5 - 6.0
2VP50063-21	DN50	2"	45	52.8	63	0 - 5	2.5 - 6.0
2VP50090-21					90	0 - 12	2.5 - 6.0

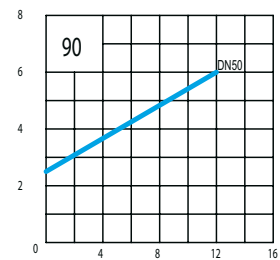
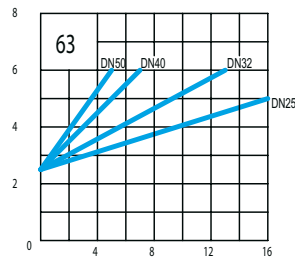
Vhodné pre dlhé zotrvanie v otvorenom stave. Po oddelení tímiča možno zmeniť na dvojčinný ventil v základnej polohe otvorený.

\ Suitable for long time valve open demand, avoid water hammer. Taking off the silencer, the valve can be changed to a double acting normally open type. \

Bar



Tlak média / Fluid pressure ΔP



Bar