

01 - 02.7

06.16.GB

**Two-way and Three-way control valves LDM
RV 113**



Kv coefficient calculation

Calculation itself is carried out with respect to conditions of regulating circuit and operating medium according to equations mentioned below. Control valve must be designed to be able to regulate maximal flow quantity at given operating conditions. At the same time it is necessary to check whether minimal flow rate can be even regulated or not.

Condition is the following ratio $r > Kvs / Kvs_{min}$

Because of possible minus tolerance 10% of Kvs_{100} , against Kvs and requirement for possible regulation within range of maximal flow (decrement and increase of flow), producer recommends to select Kvs value higher than maximal operating Kv value:

$$Kvs = 1.1 \div 1.3 Kv$$

It is necessary to take into account to which extent Q_{max} involve "precautionary additions" that could result in valve oversizing.

Relations of Kv calculation

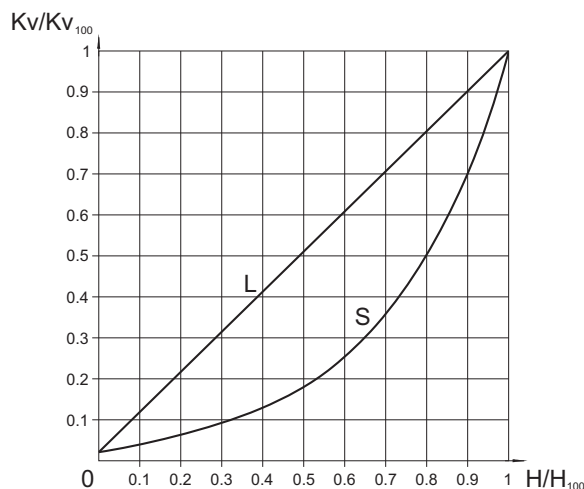
		Pressure drop $p_2 > p_1/2$ $\Delta p < p_1/2$	Pressure drop $\Delta p \geq p_1/2$ $p_2 \leq p_1/2$
Kv =	Liquid	$\frac{Q}{100} \sqrt{\frac{\rho_1}{\Delta p}}$	
	Gas	$\frac{Q_n}{5141} \sqrt{\frac{\rho_n \cdot T_1}{\Delta p \cdot p_2}}$	$\frac{2 \cdot Q_n}{5141 \cdot p_1} \sqrt{\rho_n \cdot T_1}$

Flow characteristic selection in regard of valve stroke

To make right selection of valve flow characteristic, it is suitable to carry out checking of what stroke values will be reached in different operation states. We recommend to carry out such checking at least for minimal, nominal and maximal flow rates. The principle for flow characteristic selection is to avoid, if possible, 5÷10% of the beginning and end of the valve stroke range.

To calculate valve stroke at different operating conditions with different types of flow characteristics is possible with the advantage of using LDM's calculation programme VALVES. The programme serves for complete design of valve from Kv calculation to specification of a concrete valve with its actuator.

Valve flow characteristics



L - linear characteristic

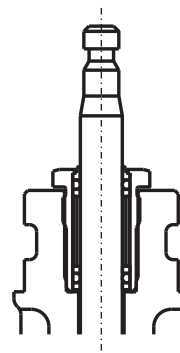
$$Kv/Kv_{100} = 0.0183 + 0.9817 \cdot (H/H_{100})$$

S - LDMspline® characteristic

$$Kv/Kv_{100} = 0.0183 + 0.269 \cdot (H/H_{100}) - 0.380 \cdot (H/H_{100})^2 + 1.096 \cdot (H/H_{100})^3 - 0.194 \cdot (H/H_{100})^4 - 0.265 \cdot (H/H_{100})^5 + 0.443 \cdot (H/H_{100})^6$$

Packing - O - ring EPDM

Well proven type of packing with sealing elements made of high quality EPDM is suitable for operating with temperature of +2 to +150°C. The packing excels with its reliability and long time tightness. Its properties ensure safe usage in nonmaintenance applications. Main preferences of the packing is low frictional forces, sealing capability in both ports (even when there is underpressure in the valve) and service life exceeding 500 000 cycles.



Dimensions and units

Marking	Unit	Name of dimension
Kv	$m^3 \cdot h^{-1}$	Flow coefficient under conditions of units of flow
Kv_{100}	$m^3 \cdot h^{-1}$	Flow coefficient at nominal stroke
Kv_{min}	$m^3 \cdot h^{-1}$	Flow coefficient at minimal flow rate
Kvs	$m^3 \cdot h^{-1}$	Valve nominal flow coefficient
Q	$m^3 \cdot h^{-1}$	Flow rate in operating conditions (T_1, p_1)
Q_n	$Nm^3 \cdot h^{-1}$	Flow rate in normal conditions (0°C, 0.101 Mpa)
p_1	MPa	Upstream absolute pressure
p_2	MPa	Downstream absolute pressure
p_s	MPa	Absolute pressure of saturated steam at given temperature (T_1)
Δp	MPa	Valve differential pressure ($\Delta p = p_1 - p_2$)
ρ_1	$kg \cdot m^{-3}$	Process medium density in operating conditions (T_1, p_1)
ρ_n	$kg \cdot Nm^{-3}$	Gas density in normal conditions (0°C, 0.101 Mpa)
T_1	K	Absolute temperature at valve inlet ($T_1 = 273 + t_1$)
r	1	Rangeability

Simplified procedure for designing of two-way control valve

Given: medium water, 115°C, static pressure at piping spot 600 kPa (6 bar), $\Delta p_{AVAIL} = 40$ kPa (0,4 bar), $\Delta p_{PIPELINE} = 7$ kPa (0,07 bar), $\Delta p_{APPLIANCE} = 15$ kPa (0,15 bar), nominal flow rate $Q_{NOM} = 36$ m³.h⁻¹, minimal flow rate $Q_{MIN} = 2,4$ m³.h⁻¹.

$$\Delta p_{AVAIL} = \Delta p_{VALVE} + \Delta p_{APPLIANCE} + \Delta p_{PIPELINE}$$

$$\Delta p_{VALVE} = \Delta p_{AVAIL} - \Delta p_{APPLIANCE} - \Delta p_{PIPELINE} = 40 - 15 - 7 = 18 \text{ kPa (0,18 bar)}$$

$$Kv = \frac{Q_{NOM}}{\sqrt{\Delta p_{VALVE}}} = \frac{36}{\sqrt{0,18}} = 84,85 \text{ m}^3 \cdot \text{h}^{-1}$$

Precautionary additions for process tolerances (provided that flow rate Q was not oversized):

$$Kvs = (1,1 \text{ to } 1,3) \cdot Kv = (1,1 \text{ to } 1,3) \cdot 84,85 = 93,3 \text{ to } 110,3 \text{ m}^3 \cdot \text{h}^{-1}$$

Now we choose the nearest Kvs value from those available in our catalogue, i.e. $Kvs = 100$ m³.h⁻¹. This value corresponds to nominal size of DN 80. Then if we choose flanged valve PN 16 made of grey cast iron, we will get the following specification No.:

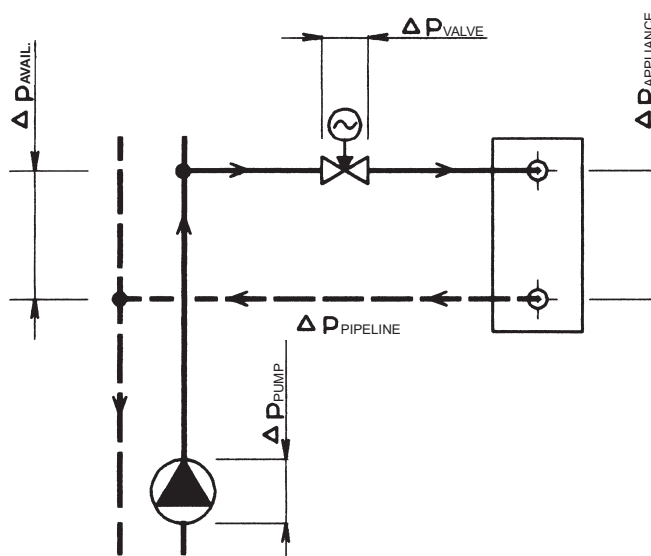
RV 113 R 4331 16/150-80

Then we select an appropriate actuator according to the regulation demands.

Determination of real pressure drop value of a chosen valve at fully open with given flow rate

$$\Delta p_{VALVE H100} = \left(\frac{Q_{NOM}}{Kvs} \right)^2 = \left(\frac{36}{100} \right)^2 = 0,123 \text{ bar (12,3 kPa)}$$

Scheme of typical regulation loop with the application of two-way control valve



Remark: More detailed information on calculation and design of LDM control valves is mentioned in calculation instructions No. 01-12.0. Equations mentioned above apply in a simplified way to water. To reach optimum results, we recommend to use original calculation programme VALVES which is available on request free of charge.

The control valve's real pressure drop calculated this way shall be taken into account in a hydraulic calculation of regulating circuit.

Determination of valve's real authority

$$a = \frac{\Delta p_{VALVE H100}}{\Delta p_{VALVE H0}} = \frac{12,3}{40} = 0,31$$

Value a should be at least equal to 0,3. A chosen valve checking is then satisfactory.

Caution: the valve's authority calculation should be related to a valve pressure difference in its closed position i.e. disposition pressure value in a branch Δp_{AVAIL} when flow rate is zero, not to a pressure value of a pump Δp_{PUMP} , because, due to pipeline circuit pressure drops up to the spot where the regulating branch is connected, the following equation applies: $\Delta p_{AVAIL} < \Delta p_{PUMP}$. In such cases we consider for simplicity the following: $\Delta p_{AVAIL H100} = \Delta p_{AVAIL H0} = \Delta p_{DISP}$.

Checking of rangeability

We carry out the same checking for minimal flow rate $Q_{MIN} = 2,4$ m³.h⁻¹. The following differential pressure values correspond to the min. flow rate: $\Delta p_{PIPELINE QMIN} = 0,40$ kPa, $\Delta p_{APPLIANCE QMIN} = 0,66$ kPa. $\Delta p_{AVAIL QMIN} = 40 - 0,4 - 0,66 = 38,94 = 39$.

$$Kv_{MIN} = \frac{Q_{MIN}}{\sqrt{\Delta p_{VALVE QMIN}}} = \frac{2,4}{\sqrt{0,39}} = 3,84 \text{ m}^3 \cdot \text{h}^{-1}$$

Necessary rangeability value

$$r = \frac{Kvs}{Kv_{MIN}} = \frac{100}{3,84} = 26$$

shall be lower than mentioned rangeability value of $r = 50$. Checking is then satisfactory.

Procedure for designing of three-way mixing valve

Given: medium water, 90°C, static pressure at piping spot 600 kPa (6 bar), $\Delta p_{\text{PUMP2}} = 35 \text{ kPa}$ (0,35 bar), $\Delta p_{\text{PIPELINE}} = 10 \text{ kPa}$ (0,1 bar), $\Delta p_{\text{APPLIANCE}} = 20 \text{ kPa}$ (0,2 bar), nominal flow rate $Q_{\text{NOM}} = 12 \text{ m}^3 \cdot \text{h}^{-1}$

$$\Delta p_{\text{PUMP2}} = \Delta p_{\text{VALVE}} + \Delta p_{\text{APPLIANCE}} + \Delta p_{\text{PIPELINE}}$$

$$\Delta p_{\text{VALVE}} = \Delta p_{\text{PUMP2}} - \Delta p_{\text{APPLIANCE}} - \Delta p_{\text{PIPELINE}} = 35 - 20 - 10 = 5 \text{ kPa} (0,05 \text{ bar})$$

$$Kv = \frac{Q_{\text{NOM}}}{\sqrt{\Delta p_{\text{VALVE}}}} = \frac{12}{\sqrt{0,05}} = 53,67 \text{ m}^3 \cdot \text{h}^{-1}$$

Precautionary additions for process tolerances (provided that flow rate Q was not oversized):

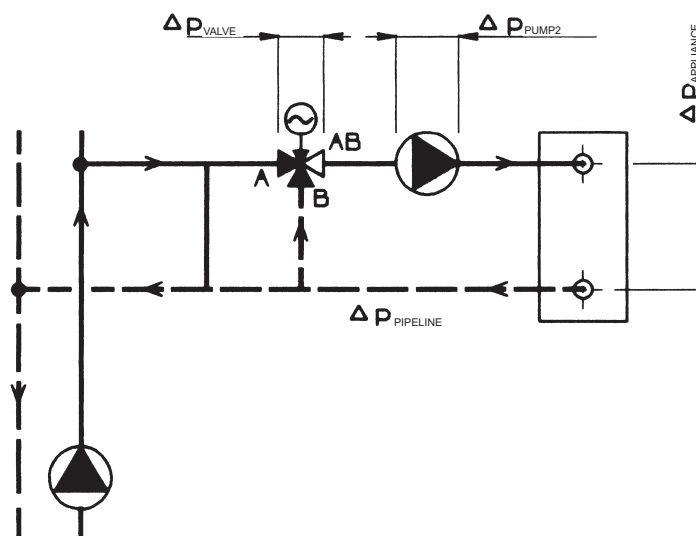
$$Kvs = (1,1 \text{ to } 1,3) \cdot Kv = (1,1 \text{ to } 1,3) \cdot 53,7 = 59,1 \text{ to } 69,8 \text{ m}^3 \cdot \text{h}^{-1}$$

Now we choose the nearest Kvs value from those available in our catalogue, i.e. $Kvs = 63 \text{ m}^3 \cdot \text{h}^{-1}$. This value corresponds to nominal size of DN 65. Then if we choose threaded valve PN 16 made of grey cast iron, we will get the following specification No.:

RV 113 M 6331-16/150-65

Then we select an appropriate actuator according to the regulation demands.

Scheme of typical regulation loop with the application of three-way control valve



Remark: More detailed information on calculation and design of LDM control valves is mentioned in calculation instructions No. 01-12.0. Equations mentioned above apply in a simplified way to water. To reach optimum results, we recommend to use original calculation programme VALVES which is available on request free of charge.

Determination of real pressure drop value of a chosen valve at fully open

$$\Delta p_{\text{VALVE H100}} = \left(\frac{Q_{\text{NOM}}}{Kvs} \right)^2 = \left(\frac{12}{63} \right)^2 = 0,036 \text{ bar} (3,6 \text{ kPa})$$

The control valve's real pressure drop calculated this way shall be taken into account in a hydraulic calculation of regulating circuit.

Caution: To ensure reliable function of three-way valves, the most important condition is to keep minimum available pressure difference between A and B ports. Three-way valves are capable to manage even high pressure difference between A and B ports but valve's flow characteristic deforms then and so regulation properties deteriorate. So if in doubt about pressure difference value between those two ports (e.g. when three-way valve is piped directly into primary side without pressure separation), we recommend to use a two-way valve in combination with a primary-secondary side short cut to ensure a reliable regulation.

RV 113 R



Two-way control valves
DN 15 - 150, PN 16
DN 15 - 40, PN 6

Description

Control valves RV 113 R are flanged, 2-way valves with pressure balanced plug (except DN 15 - 25) and high tightness designed for regulation and closing of the medium flow. Its design enables the valve to be applicable at high differential pressures with low-linear-force actuators. Owing to unique flow characteristic LDMspline®, optimized for regulation of thermodynamic processes, the valves are ideal for applications in heating and air-conditioning.

Flow characteristics, Kvs values and leakage rates correspond to international standards.

The valves type RV 113 R have connection to the following actuators: Siemens, Belimo, Ekorex and LDM.

Application

Control valves RV113 are designed for applications in heating and air-conditioning. Control valves type RV113 are also available in silicone free execution (marking in a specification number SF). The maximum permissible operating pressures are specified below on this page.

Technical data

Series	RV 113 R		
Type of valve	Three-way control valve		
Nominal size range	DN 15 to 150		
Nominal pressure	DN 15 - 40, PN 6; DN 15 - 150, PN 16	DN 15 - 150, PN 25	
Body material	Grey cast iron EN-JL 1040	Spheroidal cast iron EN-JS 1025	
Plug material	Stainless steel 1.4027 (1.4028)		
Stem material	Stainless steel 1.4305		
Seat sealing	EPDM		
Packing	EPDM		
Operating temperature range	+2 to +150°C		
Connection	Flanges type B1 (raised-faced) Acc. to ČSN-EN 1092-2 (4/2002)		
Face to face dimensions	Series 1 acc. to ČSN-EN 558 (9/2008)		
Type of plug	V-ported with soft seat sealing		
Flow characteristic	LDMspline®		
Kvs values	0,63 to 360 m³/h		
Leakage rate	Class IV. - S1 acc. to ČSN-EN 1349 (5/2001) (<0.0005 % Kvs)		
Rangeability r	50 : 1		

Maximum permissible operating pressures [MPa] acc. to ČSN EN 1092-2

Material	PN	Temperature [°C]		Material	PN	Temperature [°C]	
		120	150			120	150
Grey cast iron EN-JL 1040 (EN-GJL-250)	6	0,60	0,54	Spheroidal cast iron EN-JS 1025 (EN-GJS-400-18-LT)	25	2,50	2,43
	16	1,60	1,44				

Kvs values and differential pressures

The value Δp_{max} is maximum differential pressure when reliable closing and opening is guaranteed.

Because of the seat and plug service life, it is recommended so that permanent differential pressure would not exceed 0.4 MPa.

For further info. on actuating see actuators' catalogue sheets		Actuating (actuator)					see the table below								
		Linear force					800 N	1000 N	1500 N	2000 N	2500 N	3200 N	4000 N	4500 N	
		Kvs [m ³ /h]					Δp_{max}	Δp_{max}	Δp_{max}	Δp_{max}	Δp_{max}	Δp_{max}	Δp_{max}	Δp_{max}	
DN	H	1	2	3	4	5	MPa	MPa	MPa	MPa	MPa	MPa	MPa	MPa	
15	20	4.0	2.5	1.6	1.0	0.63	2.28	2.50	2.50	2.50	2.50	---	---	---	
20		6.3	4.0	2.5	---	---	1.43	1.96	2.50	2.50	2.50	---	---	---	
25		10	6.3	4.0	---	---	0.91	1.25	2.11	2.50	2.50	---	---	---	
32		16	10	6.3	---	---	2.50	2.50	2.50	2.50	2.50	---	---	---	
40		25	16	10	---	---	2.50	2.50	2.50	2.50	2.50	---	---	---	
50		40.0	---	---	---	---	2.50	---	2.50	2.50	2.50	2.50	2.50	2.50	
65		63.0	---	---	---	---	2.50	2.50	2.50	2.50	2.50	2.50	2.50	2.50	
80		100.0	---	---	---	---	2.50	2.50	2.50	2.50	2.50	2.50	2.50	2.50	
100	40	160.0	---	---	---	---	---	---	---	2.50	2.50	2.50	2.50	2.50	
125		250.0	---	---	---	---	---	---	---	2.50	2.50	2.50	2.50	2.50	
150		360.0	---	---	---	---	---	---	---	2.50	2.50	2.50	2.50	2.50	

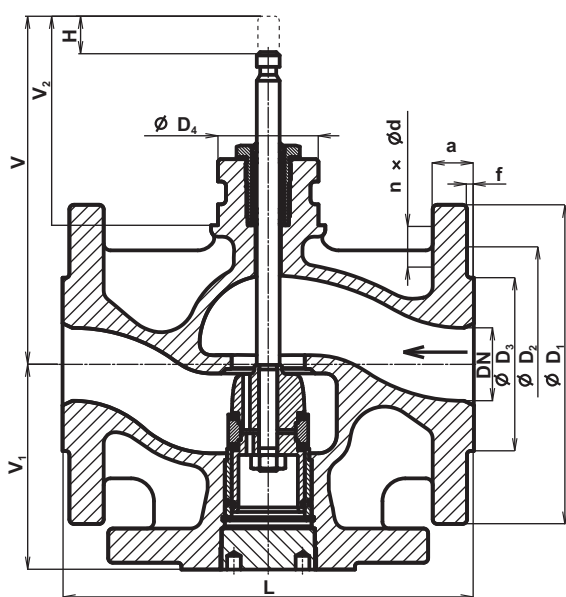
Supplied types of actuators

			stroke
Siemens	Electric actuator SAX 31.00 + SAX 31.03	AC 230 V, 3-position control, 700 N	20 mm
	Electric actuator SAX 81.00 + SAX 81.03	AC/DC 24 V, 3-position control, 800 N	
	Electric actuator SAX 61.03	AC/DC 24 V, 3-position control, 0...10V, 4...20mA, 0 to 1000 Ohm, 800 N	
Belimo	Electric actuator NV230A-RE	AC 230 V, 3-position control, 1000 N	20 mm
	Electric actuator NV24A-RE	AC/DC 24 V, 3-position control, 1000 N	
	Electric actuator NV24A-MP-RE	AC/DC 24 V, DC (0) 2...10V, 1000 N	
	Electric actuator NVC24A-MP-RE	AC/DC 24 V, DC (0) 2...10V, 1000 N	
	Electric actuator NVK24A-3-RE	AC/DC 24 V, 3-position control, 1000 N	
	Electric actuator NVK24A-MP-RE	AC/DC 24 V, DC (0) 2...10V, 1000 N	
	Electric actuator NVK230A-3-RE	AC 230 V, 3-position control, 1000 N	
	Electric actuator NVKC24A-MP-RE	AC/DC 24 V, DC (0) 2...10V, 1000 N	
	Electric actuator SV24A-MP-RE	AC/DC 24 V, DC (0) 2...10V, 1500 N	
	Electric actuator SV230A-RE	AC 230 V, 3-position control, 1500 N	
	Electric actuator SV24A-RE	AC/DC 24 V, 3-position control, 1500 N	
	Electric actuator SVC24A-MP-RE	AC/DC 24 V, DC (0) 2...10V, 1500 N	
	Electric actuator EV230A-RE	AC 230 V, 3-position control, 2500 N	
	Electric actuator EV24A-RE	AC/DC 24 V, 3-position control, 2500 N	
Electric actuator EV24A-MP-RE	AC/DC 24 V, DC (0) 2...10V, 2500 N		
Electric actuator EVC24A-MF-RE	AC/DC 24 V, DC (0) 2...10V, 2500 N		
Electric actuator RV24A-MF-RE	AC/DC 24 V, DC (0) 2...10V, 4500 N		
Ekorex	Electric actuator PTN2-XX.0	AC 230 V, 3-position control, 0...10V, 4...20mA, 2000 - 4000 N	20 - 40 mm
	Electric actuator PTN2-XX.2	AC 24 V, 3-position control, 0...10V, 4...20mA, 2000 - 4000 N	
LDM	Electric actuator ANT40.11	AC/DC 24 V (230 V with modul), 2500 N 3(2)-position control, 0...10V, 4...20mA	20 - 40 mm
	Electric actuator ANT40.11S	AC/DC 24 V (230 V s modulem), 2000 N 3(2)-position control, 0...10V, 4...20mA fail-safe function - indirect	
	Electric actuator ANT40.11R	AC/DC 24 V (230 V s modulem), 2000 N 3(2)-position control, 0...10V, 4...20mA fail-safe function - direct	

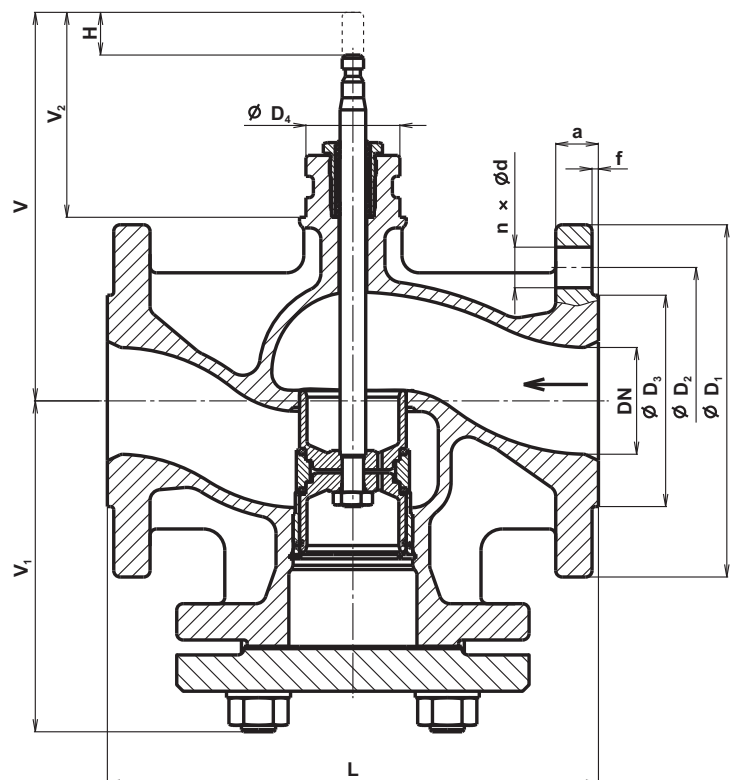
Dimensions and weights for the type RV 113 R

DN	PN 6							PN 16						
	D ₁	D ₂	D ₃	d	n	a	m	D ₁	D ₂	D ₃	d	n	a	m
	mm	mm	mm	mm	mm	mm	kg	mm	mm	mm	mm	mm	mm	kg
15	80	55	38	11	4	12	2.6	95	65	46	14	4	14	3.5
20	90	65	48	11	4	14	3.5	105	75	56	14	4	16	4.6
25	100	75	58	11	4	14	4.1	115	85	65	14	4	16	5.4
32	120	90	69	14	4	16	6.3	140	100	76	19	4	18	8.5
40	130	100	78	14	4	16	7.9	150	110	84	19	4	18	10.5
50								165	125	99	19	4	20	16.7
65								185	145	118	19	4	20	23.0
80								200	160	132	19	8	22	29.5
100								220	180	156	19	8	24	40.5
125								250	210	184	19	8	26	58.8
150								285	240	211	23	8	26	80.7

DN	PN 25							PN 6, PN 16, PN 25						
	D ₁	D ₂	D ₃	d	n	a	m	D ₄	f	L	V	V ₁	V ₂	H
	mm	mm	mm	mm	mm	mm	kg	mm	mm	mm	mm	mm	mm	mm
15	95	65	46	14	4	14	3.5	44	2	130	167	65	96	20
20	105	75	56	14	4	16	4.6	44	2	150	167	75	96	20
25	115	85	65	14	4	16	5.4	44	3	160	167	80	96	20
32	140	100	76	19	4	18	8.5	44	3	180	177	90	96	20
40	150	110	84	19	4	18	10.5	44	3	200	187	100	96	20
50	165	125	99	19	4	20	16.7	44	3	230	182	155	96	20
65	185	145	118	19	8	20	23.0	44	3	290	192	185	96	20
80	200	160	132	19	8	22	29.5	44	3	310	212	193	96	20
100	235	190	156	23	8	19	39.8	44	3	350	247	216	116	40
125	270	220	184	28	8	19	56.4	44	3	400	272	239	116	40
150	300	250	211	28	8	20	78.1	44	3	480	297	284	116	40



DN 15-40



DN 50-150

RV 113 M



Three-way control valves
DN 15 - 150, PN 16
DN 15 - 40, PN 6

Description

Control valves RV 113 M are flanged, 3-way valves with mixing or diverting function with high tightness in both ports designed for regulation. Owing to unique flow characteristic LDMspline[®], optimized for regulation of thermodynamic processes, the valves are ideal for applications in heating and air-conditioning. Flow characteristics, Kvs values and leakage rates correspond to international standards.

The valves type RV 113 M have connection to the following actuators: Siemens, Belimo and Ekorex.

Application

Control valves RV113 are designed for applications in heating and air-conditioning. Control valves type RV113 are also available in silicone free execution (marking in a specification number SF). The maximum permissible operating pressures are specified below on this page.

Process media

The valves RV113 are suitable for media such as water, air and other media compatible with material of body and internal parts in range +2 to +150°C.

Sealing surfaces of trim are resistant to common dirt and impurities in medium. However, for abrasive impurities it is recommended to pipe a strainer before the valve to ensure reliable function.

The valve cannot work in cavitation conditions.

Installation

The valve in mixing function must be piped with the medium flow according to arrows indicated on the valve body (inlet ports A, B and outlet port AB). For diverting function the valve is to be piped vice versa (inlet port AB and outlet ports A, B).

The valve can be piped in any position except when the actuator is under the valve body.

Technical data

Series	RV 113 M		
Type of valve	Three-way control valve		
Nominal size range	DN 15 to 150		
Nominal pressure	DN 15 - 40, PN 6; DN 15 - 150, PN 16	DN 15 - 150, PN 25	
Body material	Grey cast iron EN-JL 1040	Spheroidal cast iron EN-JS 1025	
Plug material	Stainless steel 1.4027		
Stem material	Stainless steel 1.4305		
Seat sealing	EPDM		
Packing	EPDM		
Operating temperature range	+2 to +150°C		
Connection	Flanges type B1 (raised-faced) Acc. to ČSN-EN 1092-2 (4/2002)		
Face to face dimensions	Series 1 acc. to ČSN-EN 558 (9/2008)		
Type of plug	V-ported with soft seat sealing		
Flow characteristic	LDMspline [®] in straight way, linear in angle way		
Kvs values	0,63 to 360 m ³ /h		
Leakage rate	Class IV. - S1 acc. to ČSN-EN 1349 (5/2001) (<0.0005 % Kvs)		
Rangeability r	50 : 1		

Maximum permissible operating pressures [MPa] acc. to ČSN EN 1092-2

Material	PN	Temperature [°C]		Material	PN	Temperature [°C]	
		120	150			120	150
Grey cast iron EN-JL 1040 (EN-GJL-250)	6	0,60	0,54	Spheroidal cast iron EN-JS 1025 (EN-GJS-400-18-LT)	25	2,50	2,43
	16	1,60	1,44				

Kvs values and differential pressures

The value Δp_{\max} is maximum differential pressure when reliable closing and opening is guaranteed.

Because of the seat and plug service life, it is recommended so that permanent differential pressure would not exceed 0.4 MPa.

For further info. on actuating see actuators' catalogue sheets		Actuating (actuator)					see the table below								
		Linear force					800 N	1000 N	1500 N	2000 N	2500 N	3200 N	4000 N	4500 N	
		Kvs [m ³ /hod]					Δp_{\max}	Δp_{\max}	Δp_{\max}	Δp_{\max}	Δp_{\max}	Δp_{\max}	Δp_{\max}	Δp_{\max}	
DN	H	1	2	3	4	5	MPa	MPa	MPa	MPa	MPa	MPa	MPa	MPa	
15	20	4.0	2.5	1.6	1.0	0.63	2.28	2.50	2.50	2.50	2.50	---	---	---	
20		6.3	4.0	2.5	---	---	1.43	1.96	2.50	2.50	2.50	---	---	---	
25		10	6.3	4.0	---	---	0.91	1.25	2.11	2.50	2.50	---	---	---	
32		16	10	6.3	---	---	0.56	0.77	1.30	1.83	2.37	---	---	---	
40		25	16	10	---	---	0.36	0.49	0.84	1.19	1.54	---	---	---	
50		40.0	---	---	---	---	0.17	0.25	0.47	0.68	0.89	1.19	1.53	1.74	
65		63.0	---	---	---	---	0.10	0.15	0.28	0.41	0.54	0.72	0.93	1.06	
80	100.0	---	---	---	---	0.06	0.10	0.19	0.28	0.36	0.49	0.63	0.71		
100	40	160.0	---	---	---	---	---	---	0.14	0.19	0.28	0.37	0.43		
125		250.0	---	---	---	---	---	---	0.09	0.12	0.18	0.24	0.28		
150		360.0	---	---	---	---	---	---	0.06	0.09	0.12	0.17	0.19		

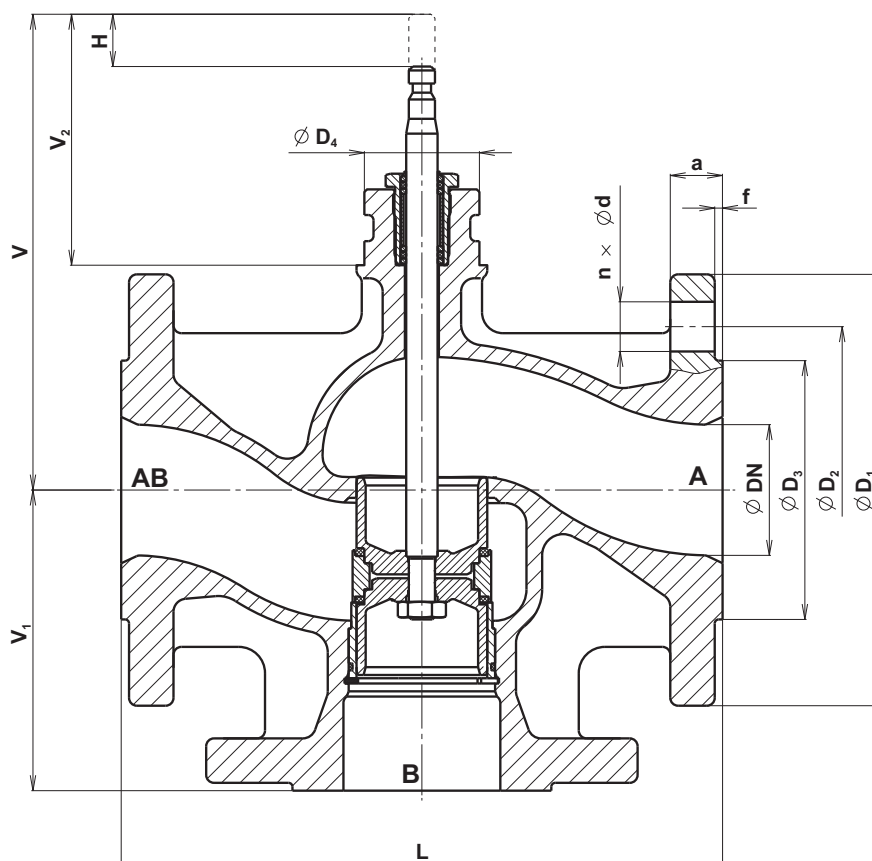
Supplied types of actuators

			stroke
Siemens	Electric actuator SAX 31.00 + SAX 31.03	AC 230 V, 3-position control, 700 N	20 mm
	Electric actuator SAX 81.00 + SAX 81.03	AC/DC 24 V, 3-position control, 800 N	
	Electric actuator SAX 61.03	AC/DC 24 V, 3-position control, 0...10V, 4...20mA, 0 to 1000 Ohm, 800 N	
Belimo	Electric actuator NV230A-RE	AC 230 V, 3-position control, 1000 N	20 mm
	Electric actuator NV24A-RE	AC/DC 24 V, 3-position control, 1000 N	
	Electric actuator NV24A-MP-RE	AC/DC 24 V, DC (0) 2...10V, 1000 N	
	Electric actuator NVC24A-MP-RE	AC/DC 24 V, DC (0) 2...10V, 1000 N	
	Electric actuator NVK24A-3-RE	AC/DC 24 V, 3-position control, 1000 N	
	Electric actuator NVK24A-MP-RE	AC/DC 24 V, DC (0) 2...10V, 1000 N	
	Electric actuator NVK230A-3-RE	AC 230 V, 3-position control, 1000 N	
	Electric actuator NVKC24A-MP-RE	AC/DC 24 V, DC (0) 2...10V, 1000 N	
	Electric actuator SV24A-MP-RE	AC/DC 24 V, DC (0) 2...10V, 1500 N	
	Electric actuator SV230A-RE	AC 230 V, 3-position control, 1500 N	
	Electric actuator SV24A-RE	AC/DC 24 V, 3-position control, 1500 N	
	Electric actuator SVC24A-MP-RE	AC/DC 24 V, DC (0) 2...10V, 1500 N	
	Electric actuator EV230A-RE	AC 230 V, 3-position control, 2500 N	
	Electric actuator EV24A-RE	AC/DC 24 V, 3-position control, 2500 N	
Electric actuator EV24A-MP-RE	AC/DC 24 V, DC (0) 2...10V, 2500 N		
Electric actuator EVC24A-MF-RE	AC/DC 24 V, DC (0) 2...10V, 2500 N		
Electric actuator RV24A-MF-RE	AC/DC 24 V, DC (0) 2...10V, 4500 N		
Ekorex	Electric actuator PTN2-XX.0	AC 230 V, 3-position control, 0...10V, 4...20mA, 2000 - 4000 N	20 - 40 mm
	Electric actuator PTN2-XX.2	AC 24 V, 3-position control, 0...10V, 4...20mA, 2000 - 4000 N	
LDM	Electric actuator ANT40.11	AC/DC 24 V (230 V with modul), 2500 N 3(2)-position control, 0...10V, 4...20mA	20 - 40 mm
	Electric actuator ANT40.11S	AC/DC 24 V (230 V s modulem), 2000 N 3(2)-position control, 0...10V, 4...20mA fail-safe function - indirect	
	Electric actuator ANT40.11R	AC/DC 24 V (230 V s modulem), 2000 N 3(2)-position control, 0...10V, 4...20mA fail-safe function - direct	

Dimensions and weights for the type RV 113 M

PN DN	PN 6							PN 16							
	D ₁	D ₂	D ₃	d	n	a	m	D ₁	D ₂	D ₃	d	n	a	m	
	mm	mm	mm	mm	mm	mm	kg	mm	mm	mm	mm	mm	mm	mm	kg
15	80	55	38	11	4	12	2.6	95	65	46	14	4	14	3.5	
20	90	65	48	11	4	14	3.5	105	75	56	14	4	16	4.6	
25	100	75	58	11	4	14	4.1	115	85	65	14	4	16	5.4	
32	120	90	69	14	4	16	6.3	140	100	76	19	4	18	8.5	
40	130	100	78	14	4	16	7.9	150	110	84	19	4	18	10.5	
50								165	125	99	19	4	20	13.0	
65								185	145	118	19	4	20	18.3	
80								200	160	132	19	8	22	24.1	
100								220	180	156	19	8	24	33.8	
125								250	210	184	19	8	26	49.3	
150								285	240	211	23	8	26	69.3	

PN DN	PN 25							PN 6, PN 16, PN 25						
	D ₁	D ₂	D ₃	d	n	a	m	D ₄	f	L	V	V ₁	V ₂	H
	mm	mm	mm	mm	mm	mm	kg	mm	mm	mm	mm	mm	mm	mm
15	95	65	46	14	4	14	3.5	44	2	130	167	65	96	20
20	105	75	56	14	4	16	4.6	44	2	150	167	75	96	20
25	115	85	65	14	4	16	5.4	44	3	160	167	80	96	20
32	140	100	76	19	4	18	8.5	44	3	180	177	90	96	20
40	150	110	84	19	4	18	10.5	44	3	200	187	100	96	20
50	165	125	99	19	4	20	13.0	44	3	230	182	115	96	20
65	185	145	118	19	8	20	18.3	44	3	290	192	145	96	20
80	200	160	132	19	8	22	24.1	44	3	310	212	155	96	20
100	235	190	156	23	8	19	33.1	44	3	350	247	175	116	40
125	270	220	184	28	8	19	46.9	44	3	400	272	200	116	40
150	300	250	211	28	8	20	66.7	44	3	480	297	240	116	40



RV 113 L



Two-way control valves
DN 15 - 150, PN 16
DN 15 - 40, PN 6

Description

Control valves RV 113 L are flanged, 2-way valves with pressure balanced plug (except DN 15 - 25) and high tightness designed for regulation and closing of the medium flow. Its design enables the valve to be applicable at high differential pressures with low-linear-force actuators. Owing to unique flow characteristic LDMspline®, optimized for regulation of thermodynamic processes, the valves are ideal for applications in heating and air-conditioning.

Flow characteristics, Kvs values and leakage rates correspond to international standards.

The valves type RV 113 L have connection to the electrohydraulic actuators Siemens.

Application

Control valves RV113 are designed for applications in heating and air-conditioning. Control valves type RV113 are also available in silicone free execution (marking in a specification number SF). The maximum permissible operating pressures are specified below on this page.

Process media

The valves RV113 are suitable for media such as water, air and other media compatible with material of body and internal parts in range +2 to +150°C.

Sealing surfaces of trim are resistant to common dirt and impurities in medium. However, for abrasive impurities it is recommended to pipe a strainer before the valve to ensure reliable function.

The valve cannot work in cavitation conditions.

Installation

The valve must be piped with the medium flow according to arrows indicated on the valve body.

The valve can be piped in any position except when the actuator is under the valve body.

Technical data

Series	RV 113 L		
Type of valve	Three-way control valve		
Nominal size range	DN 15 to 150		
Nominal pressure	DN 15 - 40, PN 6; DN 15 - 150, PN 16	DN 15 - 150, PN 25	
Body material	Grey cast iron EN-JL 1040	Spheroidal cast iron EN-JS 1025	
Plug material	Stainless steel 1.4027 (1.4028)		
Stem material	Stainless steel 1.4305		
Seat sealing	EPDM		
Packing	EPDM		
Operating temperature range	+2 to +150°C		
Connection	Flanges type B1 (raised-faced) Acc. to ČSN-EN 1092-2 (4/2002)		
Face to face dimensions	Series 1 acc. to ČSN-EN 558 (9/2008)		
Type of plug	V-ported with soft seat sealing		
Flow characteristic	LDMspline®		
Kvs values	0,63 to 360 m³/h		
Leakage rate	Class IV. - S1 acc. to ČSN-EN 1349 (5/2001) (<0.0005 % Kvs)		
Rangeability r	50 : 1		

Maximum permissible operating pressures [MPa] acc. to ČSN EN 1092-2

Material	PN	Temperature [°C]		Material	PN	Temperature [°C]	
		120	150			120	150
Grey cast iron EN-JL 1040 (EN-GJL-250)	6	0,60	0,54	Spheroidal cast iron EN-JS 1025 (EN-GJS-400-18-LT)	25	2,50	2,43
	16	1,60	1,44				

Kvs values and differential pressures

The value Δp_{max} is maximum differential pressure when reliable closing and opening is guaranteed.

Because of the seat and plug service life, it is recommended so that permanent differential pressure would not exceed 0.4 MPa.

For further info. on actuating see actuators' catalogue sheets		Actuating (actuator)					see the table below	
		Linear force					1000 N	2800 N
DN	H	Kvs [m ³ /h]					Δp_{max}	Δp_{max}
		1	2	3	4	5	MPa	MPa
15	20	4.0	2.5	1.6	1.0	0.63	2.50	---
20		6.3	4.0	2.5	---	---	1.96	---
25		10	6.3	4.0	---	---	1.25	2.50
32		16	10	6.3	---	---	2.50	2.50
40		25	16	10	---	---	2.50	2.50
50		40.0	---	---	---	---	2.50	2.50
65		63.0	---	---	---	---	2.50	2.50
80	100.0	---	---	---	---	2.50	2.50	
100	40	160.0	---	---	---	---	---	2.50
125		250.0	---	---	---	---	---	2.50
150		360.0	---	---	---	---	---	2.50

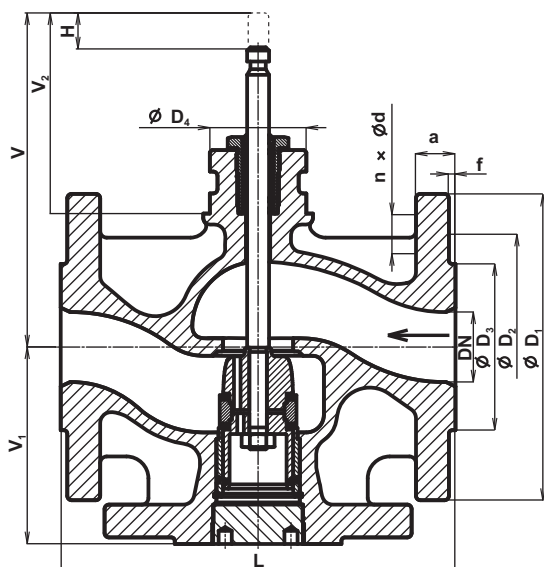
Supplied types of actuators

			stroke
Siemens	Electric actuator SKD 32.50	AC 230 V, 3-position control, 120 s, 1000 N	20 mm
	Electric actuator SKD 82.50	AC 24 V, 3-position control, 120 s, 1000 N	
	Electric actuator SKD 32.51	AC 230 V, 3-position control, 120 s, fail-safe fct., 1000 N	
	Electric actuator SKD 32.21	AC 230 V, 3-position control, 30 s, fail-safe funct., 1000 N	
	Electric actuator SKD 82.51	AC 24 V, 3-position control, fail-safe function, 1000 N	
	Electric actuator SKD 60	AC 24 V, control 0...10 V, 4...20 mA, 0-1000 Ω , 1000 N	
	Electric actuator SKD 62	AC 24 V, control 0...10 V, 4...20 mA, 0-1000 Ω , fail-safe fct., 1000 N	
	Electric actuator SKD 62UA	AC 24 V, control 0...10 V, 4...20 mA, 0-1000 Ω , fail-safe fct., 1000 N	
Siemens	Electric actuator SKB 32.50	AC 230 V, 3-position control, 120 s, 2800 N	20 mm
	Electric actuator SKB 82.50	AC 24 V, 3-position control, 120 s, 2800 N	
	Electric actuator SKB 32.51	AC 230 V, 3-position control, 120 s, fail-safe fct., 2800 N	
	Electric actuator SKB 82.51	AC 24 V, 3-position control, 120 s, fail-safe fct., 2800 N	
	Electric actuator SKB 60	AC 24 V, control 0...10 V, 4...20 mA, 0-1000 Ω , 2800 N	
	Electric actuator SKB 62	AC 24 V, control 0...10 V, 4...20 mA, fail-safe fct., 0-1000 Ω , 2800 N	
Siemens	Electric actuator SKB 62UA	AC 24 V, control 0...10 V, 4...20 mA, fail-safe fct., 0-1000 Ω , 2800 N	40 mm
	Electric actuator SKC 32.50	AC 230 V, 3-position control, 120 s	
	Electric actuator SKC 82.50	AC 24 V, 3-position control, 120 s	
	Electric actuator SKC 32.51	AC 230 V, 3-position control, 120 s, fail-safe fct.	
	Electric actuator SKC 82.51	AC 24 V, 3-position control, 120 s, fail-safe fct.	
	Electric actuator SKC 60	AC 24 V, control 0...10 V, 4...20 mA	
	Electric actuator SKC 62	AC 24 V, control 0...10 V, 4...20 mA, fail-safe fct.	
Electric actuator SKC 62UA	AC 24 V, control 0...10 V, 4...20 mA, fail-safe fct.		

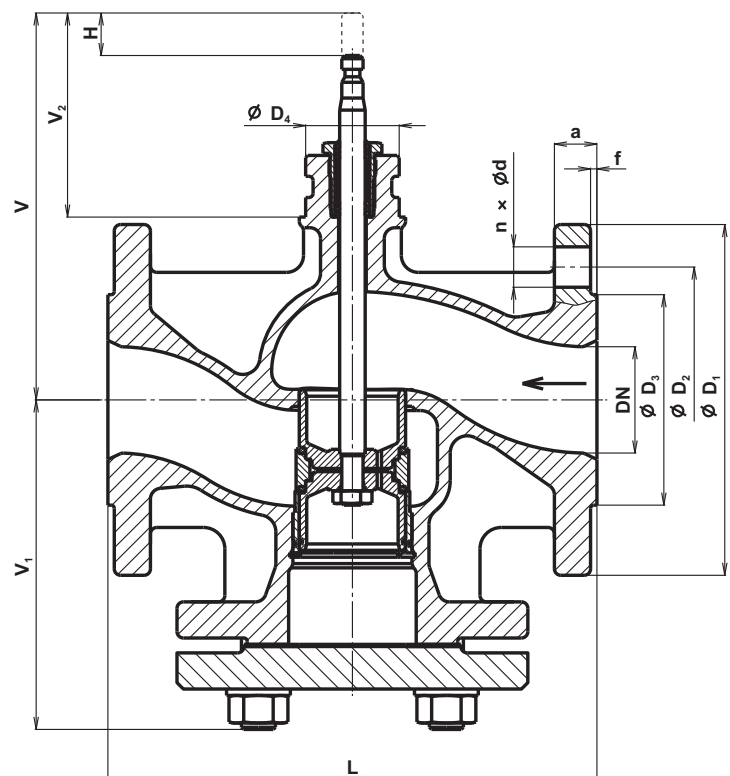
Dimensions and weights for the type RV 113 L

DN	PN 6							PN 16						
	D ₁	D ₂	D ₃	d	n	a	m	D ₁	D ₂	D ₃	d	n	a	m
	mm	mm	mm	mm	mm	mm	kg	mm	mm	mm	mm	mm	mm	kg
15	80	55	38	11	4	12	2.6	95	65	46	14	4	14	3.5
20	90	65	48	11	4	14	3.5	105	75	56	14	4	16	4.6
25	100	75	58	11	4	14	4.1	115	85	65	14	4	16	5.4
32	120	90	69	14	4	16	6.3	140	100	76	19	4	18	8.5
40	130	100	78	14	4	16	7.9	150	110	84	19	4	18	10.5
50								165	125	99	19	4	20	16.7
65								185	145	118	19	4	20	23.0
80								200	160	132	19	8	22	29.5
100								220	180	156	19	8	24	40.5
125								250	210	184	19	8	26	58.8
150								285	240	211	23	8	26	80.7

DN	PN 25							PN 6, PN 16, PN 25						
	D ₁	D ₂	D ₃	d	n	a	m	D ₄	f	L	V	V ₁	V ₂	H
	mm	mm	mm	mm	mm	mm	kg	mm	mm	mm	mm	mm	mm	mm
15	95	65	46	14	4	14	3.5	44	2	130	167	65	96	20
20	105	75	56	14	4	16	4.6	44	2	150	167	75	96	20
25	115	85	65	14	4	16	5.4	44	3	160	167	80	96	20
32	140	100	76	19	4	18	8.5	44	3	180	177	90	96	20
40	150	110	84	19	4	18	10.5	44	3	200	187	100	96	20
50	165	125	99	19	4	20	16.7	44	3	230	182	155	96	20
65	185	145	118	19	8	20	23.0	44	3	290	192	185	96	20
80	200	160	132	19	8	22	29.5	44	3	310	212	193	96	20
100	220	180	156	23	8	24	39.8	44	3	350	247	216	116	40
125	250	210	184	28	8	26	56.4	44	3	400	272	239	116	40
150	285	240	211	28	8	26	78.1	44	3	480	297	284	116	40



DN 15-40



DN 50-150

RV 113 S



Three-way control valves
DN 15 - 150, PN 16
DN 15 - 40, PN 6

Description

Control valves RV 113 S are flanged, 3-way valves with mixing or diverting function with high tightness in a straight way designed for regulation. Owing to unique flow characteristic LDMspline®, optimized for regulation of thermodynamic processes, the valves are ideal for applications in heating and air-conditioning.

Flow characteristics, Kvs values and leakage rates correspond to international standards.

The valves type RV 113 S have connection to the Siemens electrohydraulic actuators.

Application

Control valves RV113 are designed for applications in heating and air-conditioning. Control valves type RV113 are also available in silicone free execution (marking in a specification number SF). The maximum permissible operating pressures are specified below on this page.

Process media

The valves RV113 are suitable for media such as water, air and other media compatible with material of body and internal parts in range +2 to +150°C.

Sealing surfaces of trim are resistant to common dirt and impurities in medium. However, for abrasive impurities it is recommended to pipe a strainer before the valve to ensure reliable function.

The valve cannot work in cavitation conditions.

Installation

The valve in mixing function must be piped with the medium flow according to arrows indicated on the valve body (inlet ports A, B and outlet port AB). For diverting function the valve is to be piped vice versa (inlet port AB and outlet ports A, B).

The valve can be piped in any position except when the actuator is under the valve body.

Technical data

Series	RV 113 S		
Type of valve	Three-way control valve		
Nominal size range	DN 15 to 150		
Nominal pressure	DN 15 - 40, PN 6; DN 15 - 150, PN 16	DN 15 - 150, PN 25	
Body material	Grey cast iron EN-JL 1040	Spheroidal cast iron EN-JS 1025	
Plug material	Stainless steel 1.4027		
Stem material	Stainless steel 1.4305		
Seat sealing	EPDM		
Packing	EPDM		
Operating temperature range	+2 to +150°C		
Connection	Flanges type B1 (raised-faced) Acc. to ČSN-EN 1092-2 (4/2002)		
Face to face dimensions	Series 1 acc. to ČSN-EN 558 (9/2008)		
Type of plug	V-ported with soft seat sealing		
Flow characteristic	LDMspline® in straight way, linear in angle way		
Kvs values	0,63 to 360 m ³ /h		
Leakage rate in direct way	Class IV. - S1 acc. to ČSN-EN 1349 (5/2001) (<0.0005 % Kvs)		
Leakage rate in angle way	Not guaranteed (<2% Kvs)		
Rangeability r	50 : 1		

Maximum permissible operating pressures [MPa] acc. to ČSN EN 1092-2

Material	PN	Temperature [°C]		Material	PN	Temperature [°C]	
		120	150			120	150
Grey cast iron EN-JL 1040 (EN-GJL-250)	6	0,60	0,54	Spheroidal cast iron EN-JS 1025 (EN-GJS-400-18-LT)	25	2,50	2,43
	16	1,60	1,44				

Kvs values and differential pressures

The value Δp_{\max} is maximum differential pressure when reliable closing and opening is guaranteed.

Because of the seat and plug service life, it is recommended so that permanent differential pressure would not exceed 0.4 MPa.

For further info. on actuating see actuators' catalogue sheets		Actuating (actuator)					see the table below	
		Linear force					1000 N	2800 N
		Kvs [m ³ /h]					Δp_{\max}	Δp_{\max}
DN	H	1	2	3	4	5	MPa	MPa
15	20	4.0	2.5	1.6	1.0	0.63	2.50	---
20		6.3	4.0	2.5	---	---	1.96	---
25		10	6.3	4.0	---	---	1.25	2.50
32		16	10	6.3	---	---	0.77	2.50
40		25	16	10	---	---	0.49	1.74
50		40.0	---	---	---	---	0.25	1.02
65		63.0	---	---	---	---	0.15	0.62
80		100.0	---	---	---	---	0.10	0.42
100	40	160.0	---	---	---	---	---	0.23
125		250.0	---	---	---	---	---	0.15
150		360.0	---	---	---	---	---	0.10

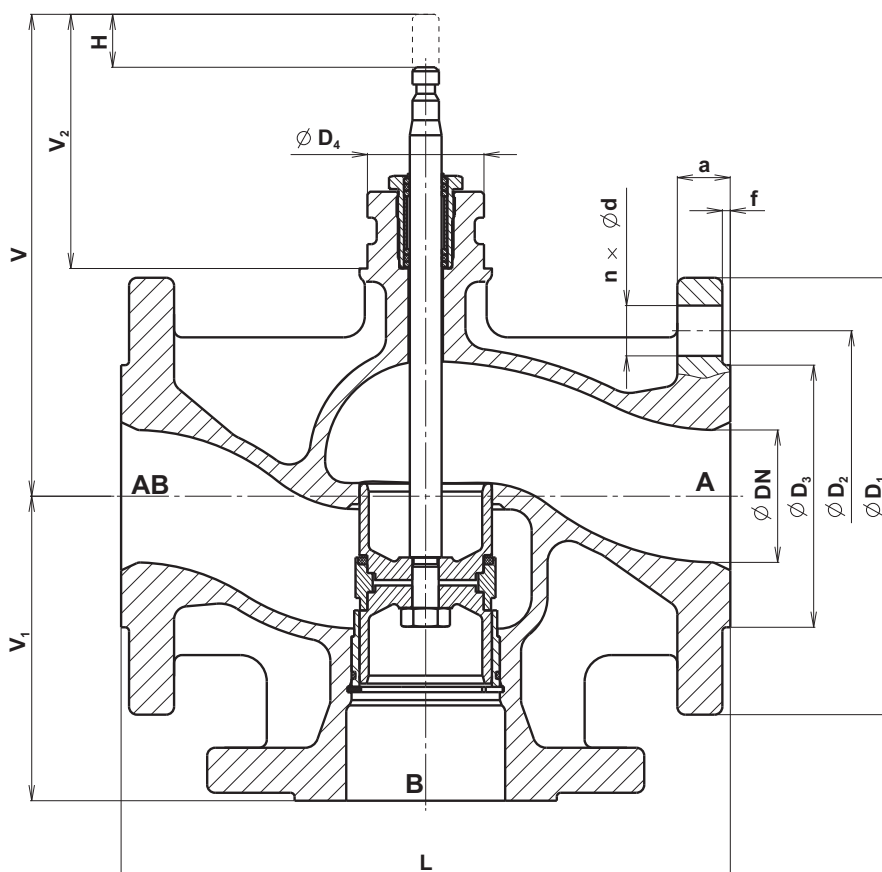
Supplied types of actuators

			stroke
Siemens	Electric actuator SKD 32.50	AC 230 V, 3-position control, 120 s, 1000 N	20 mm
	Electric actuator SKD 82.50	AC 24 V, 3-position control, 120 s, 1000 N	
	Electric actuator SKD 32.51	AC 230 V, 3-position control, 120 s, fail-safe fct., 1000 N	
	Electric actuator SKD 32.21	AC 230 V, 3-position control, 30 s, fail-safe funct., 1000 N	
	Electric actuator SKD 82.51	AC 24 V, 3-position control, fail-safe function, 1000 N	
	Electric actuator SKD 60	AC 24 V, control 0...10 V, 4...20 mA, 0-1000Ω, 1000 N	
	Electric actuator SKD 62	AC 24 V, control 0...10 V, 4...20 mA, 0-1000Ω, fail-safe fct., 1000 N	
	Electric actuator SKD 62UA	AC 24 V, control 0...10 V, 4...20 mA, 0-1000Ω, fail-safe fct., 1000 N	
Siemens	Electric actuator SKB 32.50	AC 230 V, 3-position control, 120 s, 2800 N	20 mm
	Electric actuator SKB 82.50	AC 24 V, 3-position control, 120 s, 2800 N	
	Electric actuator SKB 32.51	AC 230 V, 3-position control, 120 s, fail-safe fct., 2800 N	
	Electric actuator SKB 82.51	AC 24 V, 3-position control, 120 s, fail-safe fct., 2800 N	
	Electric actuator SKB 60	AC 24 V, control 0...10 V, 4...20 mA, 0-1000Ω, 2800 N	
	Electric actuator SKB 62	AC 24 V, control 0...10 V, 4...20 mA, fail-safe fct., 0-1000Ω, 2800 N	
Siemens	Electric actuator SKB 62UA	AC 24 V, control 0...10 V, 4...20 mA, fail-safe fct., 0-1000Ω, 2800 N	40 mm
	Electric actuator SKC 32.50	AC 230 V, 3-position control, 120 s	
	Electric actuator SKC 82.50	AC 24 V, 3-position control, 120 s	
	Electric actuator SKC 32.51	AC 230 V, 3-position control, 120 s, fail-safe fct.	
	Electric actuator SKC 82.51	AC 24 V, 3-position control, 120 s, fail-safe fct.	
	Electric actuator SKC 60	AC 24 V, control 0...10 V, 4...20 mA	
	Electric actuator SKC 62	AC 24 V, control 0...10 V, 4...20 mA, fail-safe fct.	
Electric actuator SKC 62UA	AC 24 V, control 0...10 V, 4...20 mA, fail-safe fct.		

Dimensions and weights for the type RV 113 S

PN	PN 6							PN 16								
	DN	D ₁	D ₂	D ₃	d	n	a	m	D ₁	D ₂	D ₃	d	n	a	m	
		mm	mm	mm	mm	mm	mm	kg	mm	mm	mm	mm	mm	mm	mm	kg
15	80	55	38	11	4	12	2.6	95	65	46	14	4	14	3.5		
20	90	65	48	11	4	14	3.5	105	75	56	14	4	16	4.6		
25	100	75	58	11	4	14	4.1	115	85	65	14	4	16	5.4		
32	120	90	69	14	4	16	6.3	140	100	76	19	4	18	8.5		
40	130	100	78	14	4	16	7.9	150	110	84	19	4	18	10.5		
50								165	125	99	19	4	20	13.0		
65								185	145	118	19	4	20	18.3		
80								200	160	132	19	8	22	24.1		
100								220	180	156	19	8	24	33.8		
125								250	210	184	19	8	26	49.3		
150								285	240	211	23	8	26	69.3		

PN	PN 25							PN 6, PN 16, PN 25							
	DN	D ₁	D ₂	D ₃	d	n	a	m	D ₄	f	L	V	V ₁	V ₂	H
		mm	mm	mm	mm	mm	mm	kg	mm	mm	mm	mm	mm	mm	mm
15	95	65	46	14	4	14	3.5	44	2	130	167	65	96	20	
20	105	75	56	14	4	16	4.6	44	2	150	167	75	96	20	
25	115	85	65	14	4	16	5.4	44	3	160	167	80	96	20	
32	140	100	76	19	4	18	8.5	44	3	180	177	90	96	20	
40	150	110	84	19	4	18	10.5	44	3	200	187	100	96	20	
50	165	125	99	19	4	20	13.0	44	3	230	182	155	96	20	
65	185	145	118	19	8	20	18.3	44	3	290	192	185	96	20	
80	200	160	132	19	8	22	24.1	44	3	310	212	193	96	20	
100	235	190	156	23	8	19	33.1	44	3	350	247	216	116	40	
125	270	220	184	28	8	19	46.9	44	3	400	272	239	116	40	
150	300	250	211	28	8	20	66.7	44	3	480	297	284	116	40	



The valve complete specification No. for ordering RV 113

		XX	XXX	X	XXXX	XX	/	XXX	-	XXX	XX
1. Valve	Control valve	RV									
2. Series	Valves made of grey cast iron		113								
3. Type of valve	Two-way control valve			R							
	Three-way control valve			M							
	Two-way control valve for electrohydraulic actuators			L							
	Three-way control valve for electrohydraulic actuators			S							
4. Execution	Flanged, two-way				4						
	Flanged, three-way mixing (diverting)				6						
5. Body material	Grey cast iron				3						
	Spheroidal cast iron				4						
6. Flow characteristic	LDMspline® / linear				3						
7. Kvs	Column No. acc. to Kvs value table				X						
8. Nominal pressure PN	PN 6 (grey cast iron only) DN 15 až 40					06					
	PN 16					16					
	PN 25 (spheroidal cast iron only)					25					
9. Max. temperature °C	150°C							150			
10. Nominal size DN	DN 15 to 150								XXX		
11. Execution	Normal										
	Silicone free										SF

Ordering example: RV113 R 4331 16/150-065

The actuator must be specified separately.


**Electric actuators
SAX
Siemens**
Technical data

Type	SAX 31.00	SAX 31.03	SAX 61.03	SAX 81.00	SAX 81.03
Suitable for valves	RV 113 R, M				
Voltage	230 V AC		24 V AC/DC		
Frequency	50 Hz				
Power consumption	3,5 VA	8 VA	8 VA	3,5 VA	8 VA
Control	3 - point		0 - 10 V, 4 - 20 mA, 0 - 1000 Ω	3 - point	
Open-close running time	120 s	30 s	30 s	120 s	30 s
Nominal force	800 N				
Travel	20 mm				
Enclosure	IP 54				
Process medium max. temp.	130°C (160°C when bellows or cooler is used)				
Ambient and actuator surface temp. range	-15 to 55°C				
Ambient humidity limit	< 95 % r.v.				
Handle	yes				
Weight	1,85 kg				

See original producer's catalogue sheets for further information about actuators.

Accessories for actuators SAX31..., SAX81... (optional)

Auxiliary switch ASC10.51

2x auxiliary switch ASC10.51 (jen bez ASZ7.5)

Potentiometer 135 Ω ASZ7.5/135

Potentiometer 200 Ω ASZ7.5/200

Potentiometer 1000 Ω ASZ7.5/1000

Weather shield ASK39.1

Stem heating element (130°C...160°C)

Accessories for actuators SAX61... (optional)

Auxiliary switch ASC10.51

2x auxiliary switch ASC10.51 (jen bez AZX61.1)

Function module AZX61.1

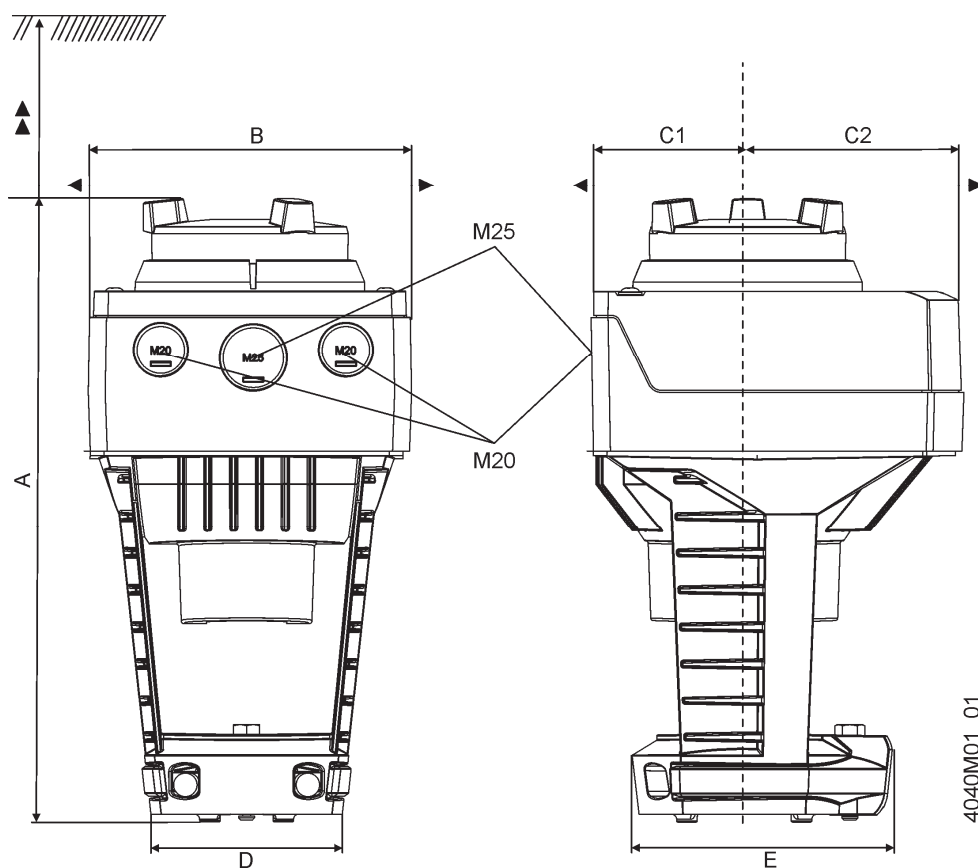
Weather shield ASK39.1

Stem heating element (130°C...160°C)

Function module AZX61.1

The functional module allows sequential drive, adaptation of control signal and reversing signal.

Dimensions of actuator



4040M01_01

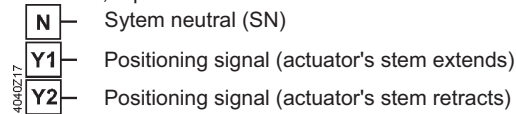
Product type	A	B	C	C1	C2	D	E	>	>>
SAX...	242	124	150	68	82	80	100	100	200
ASK39.1 cover included	+25	154	300	200	100	-	-	-	-

Dimensions in mm

Connection terminals

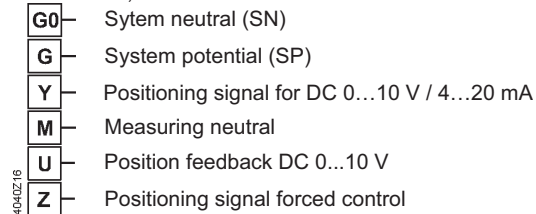
SAX31..

AC 230 V, 3-position



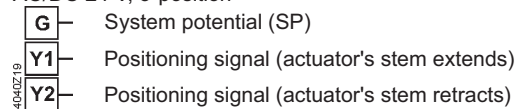
SAX61..

AC/DC 24 V, DC 0...10 V / 4...20 mA / 0...1000 Ω

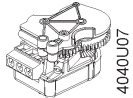


SAX81..

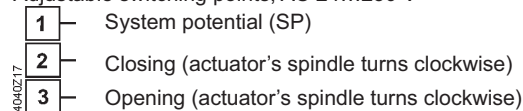
AC/DC 24 V, 3-position



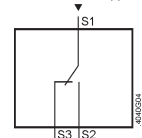
Auxiliary switch
ASC10.51



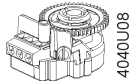
Adjustable switching points, AC 24...230 V



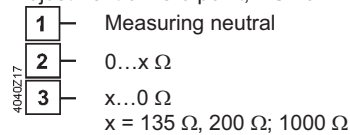
AC 24 V...230 V / 6 (3) A



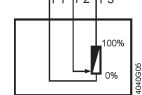
Potentiometer
ASZ7.5/..



Adjustment of zero point, DC 10 V

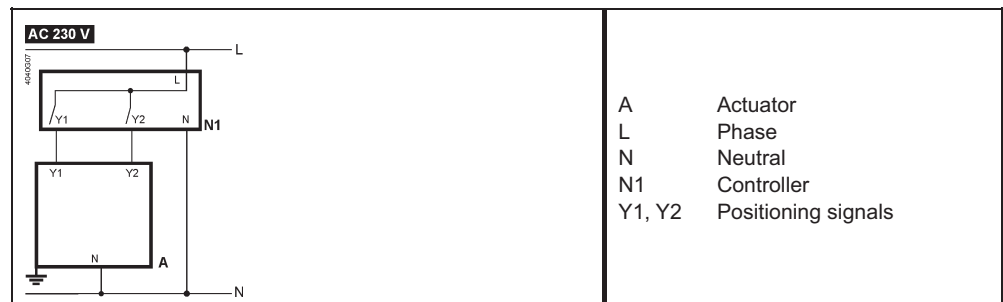


SELV/PELV 0...1000 Ω
0...200 Ω
0...135 Ω

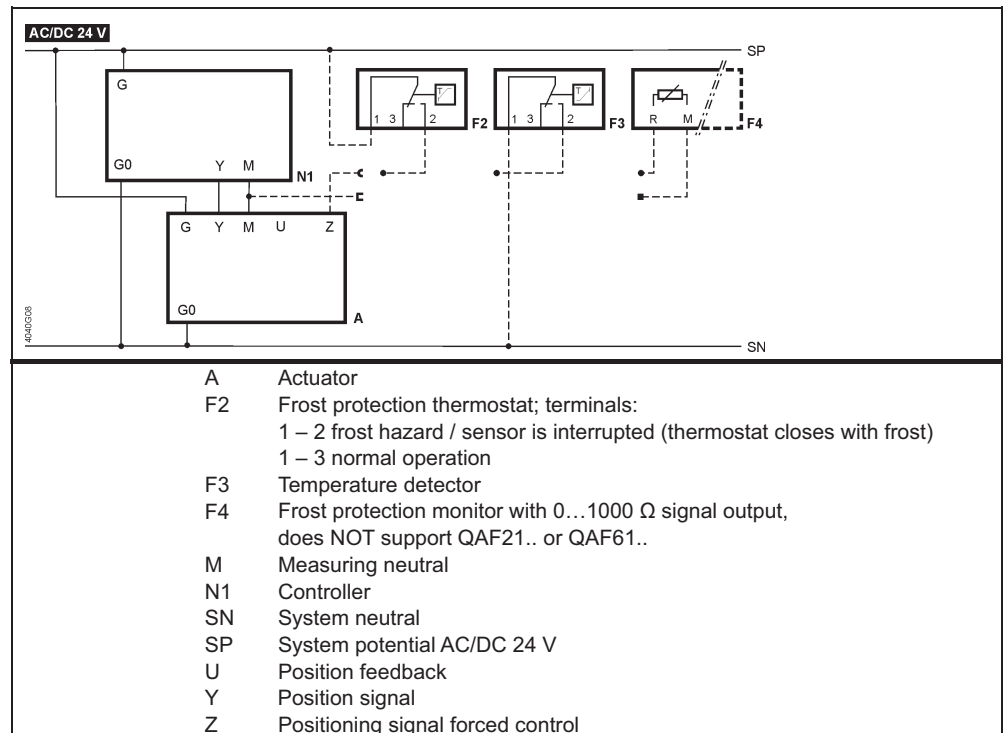


Connection diagrams

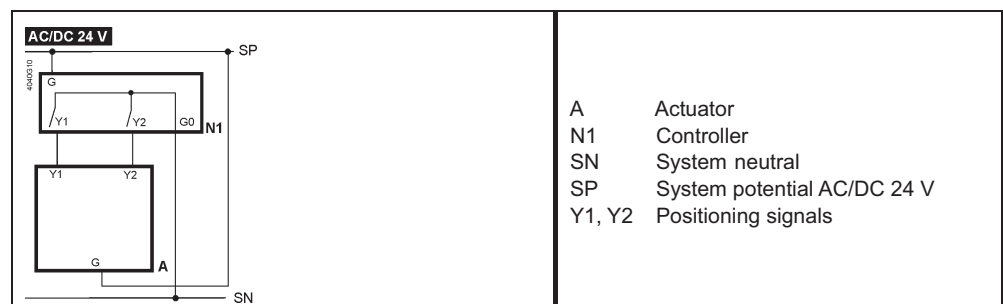
SAX31..



SAX61..



SAX81..





**Electrohydraulic actuators
SKD 32..., SKD 82...
Siemens (Landis & Staefa)**

Technical data

Type	SKD 32.50	SKD 82.50	SKD 32.51	SKD 32.21	SKD 82.51
Suitable for valves	RV 113 L, S				
Voltage	230 V	24 V	230 V		24 V
Frequency	50...60 Hz				
Power consumption	10 VA		15 VA		
Control	3 - position		3 - position		
Running time open	120 s		120 s	30 s	120 s
closed	120 s		120 s	10 s	120 s
Fail-safe action time	---		8 s		
Nominal force	1000 N				
Travel	20 mm				
Enclosure	IP 54				
Process medium max. t.	140°C (180°C when bellows or cooler is used)				
Ambient and actuator's surface temp. limit	-15 to 50°C				
Ambient humidity limit	5 - 95 % of relative humidity				
Weight	3,6 kg				

Accessories

Pair of auxiliary switches ASC9.3

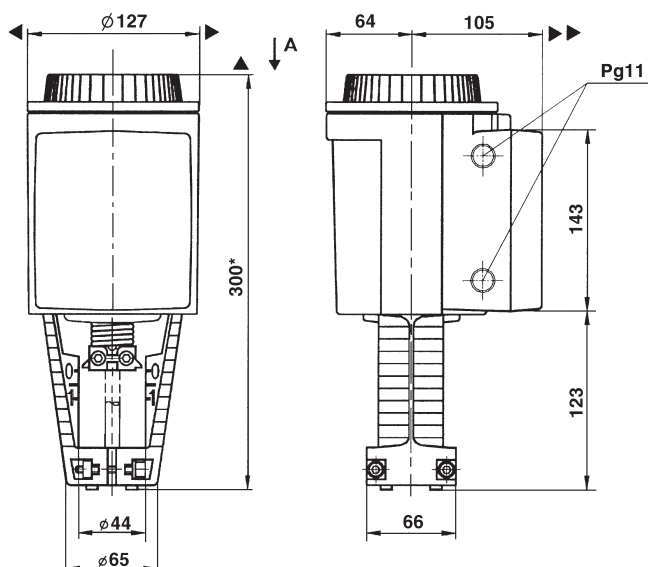
Potentiometer 1000 Ω ASZ7.3 *)

Potentiometer 135 Ω ASZ7.31 *)

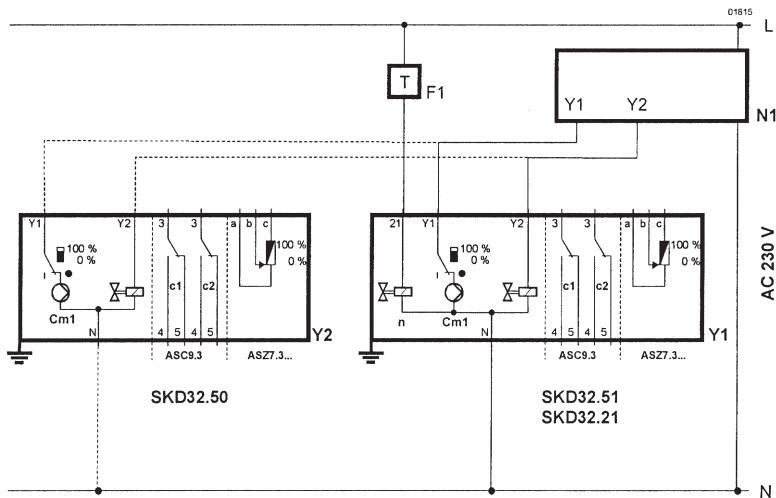
Potentiometer 200 Ω ASZ7.32 *)

*) 1 potentiometer can be used for 1 actuator only

Dimensions of actuator

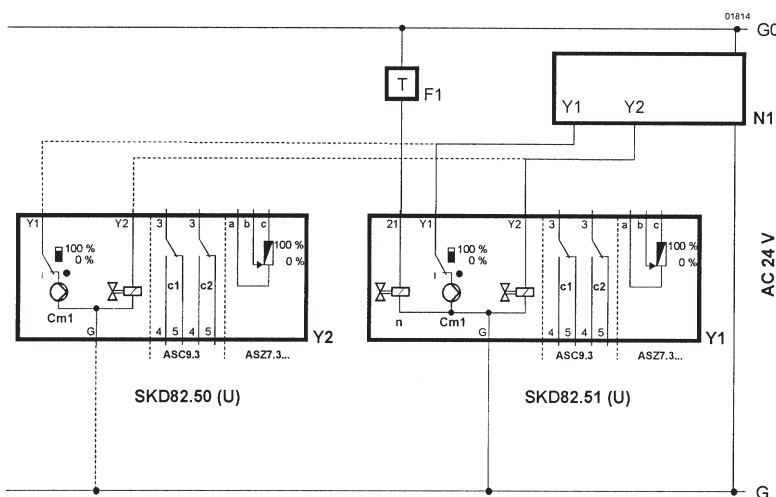


Wiring diagram of actuator SKD 32...



- F1 safety thermostat
- N1 regulator
- Y1/2 actuators
- C1/2 switches
- Cm1 end switch
- ASC9.3 double auxiliary switch
- ASZ7.3... potentiometer
- L phaseGsystem potential (SP)
- G0 system neutral (SN)
- N zero
- Y1 opening of control valve
- Y2 closing of control valve
- 21 fail-safe function

Wiring diagram of actuator SKD 82...



- F1 safety thermostat
- N1 regulator
- Y1/2 actuators
- C1/2 switches
- Cm1 end switch
- ASC9.3 double auxiliary switch
- ASZ7.3... potentiometer
- G system potential (SP)
- G0 system neutral (SN)
- N zero
- Y1 opening of control valve
- Y2 closing of control valve
- 21 fail-safe function



**Electrohydraulic actuators
SKD 60 and SKD 62...
Siemens (Landis & Staefa)**

Technical data

Type	SKD 60	SKD 62	SKD 62UA *)
Suitable for valves		RV 113 L, S	
Voltage		24 V	
Frequency		50...60 Hz	
Power consumption		17 VA / 12 VA	
Control		0 - 10 V, 4 - 20 mA, 0 - 1000Ω	
Running time open		30 s	
closed		15 s	
Fail-safe action time	---		15 s
Nominal force		1000 N	
Travel		20 mm	
Enclosure		IP 54	
Process medium max. t.		140°C (180°C when bellows or cooler is used)	
		-15 to 50°C	
Weight	3,6 kg	3,85 kg	3,6 kg

*) UA... version with improved electronics

Accessories

Auxiliary switch 24 V ASC1.6

Description

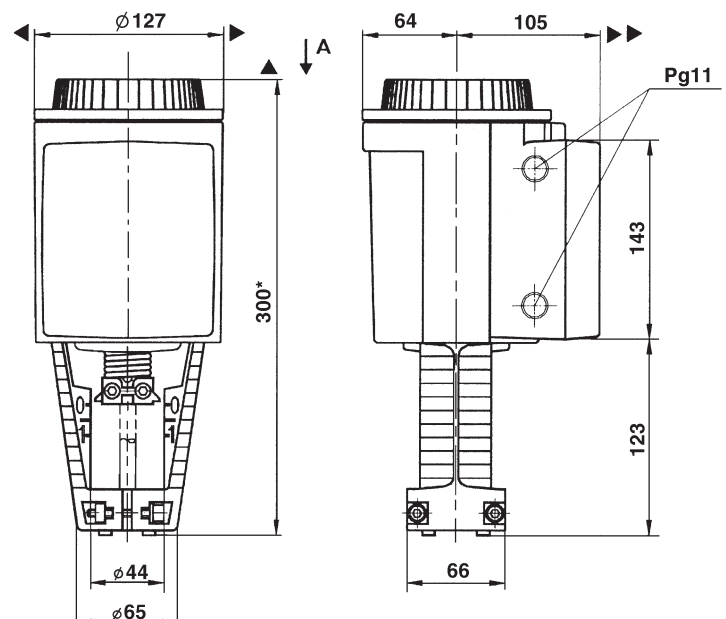
Each actuator with continuous control signal is equipped with ACT control technology enabling the following features as standard:

- stroke range calibration
- state indication via LED
- flow characteristic selection (log / lin)
- selection of control signal at Y terminal
- feedback signal at U terminal corresponding to control signal at Y terminal
- forced control at Z terminal

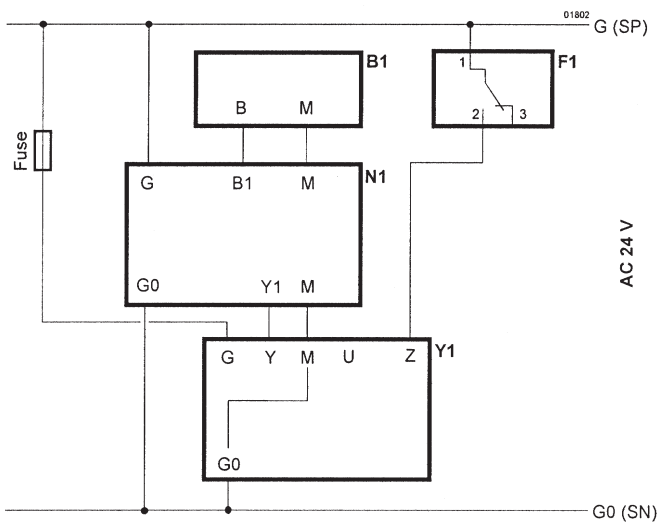
Version with improved electronics (UA) further enables:

- inversion of control signal
- sequence control
- stroke limiting

Dimensions of actuator

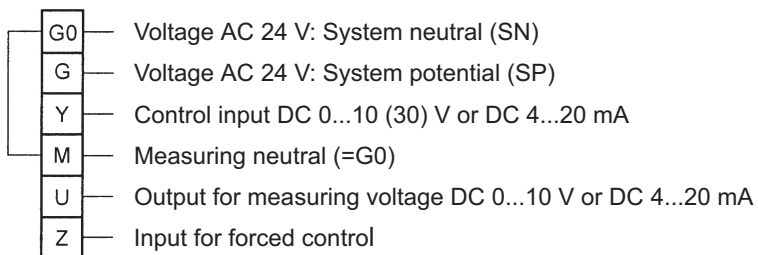


Wiring diagram of actuators

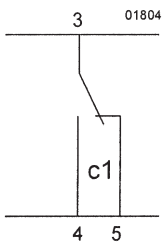


B1 sensor
 F1 safety thermostat
 N1 regulator
 Y1 actuator

Connection terminals



Auxiliary contact ASC1.6





**HLD, HLE
HLG, HLH**

**Electrohydraulic actuators
SKB 32..., SKB 82...
SKC 32..., SKC 82...
Siemens (Landis & Staefa)**

Technical data

Type	SKB 32.50	SKB 82.50	SKB 32.51	SKB 82.51	SKC 32.60	SKC 82.60	SKC 32.61	SKC 82.61
Suitable for valves	RV 113 L, S							
Voltage	230 V	24 V	230 V	24 V	230 V	24 V	230 V	24 V
Frequency	50...60 Hz							
Power consumption	10 VA		15 VA		19 VA		24 VA	
Control	3 - position							
Running time open	120 s		120 s		120 s		120 s	
Running time closed	120 s		120 s		120 s		120 s	
Fail-safe action time	---		10 s		---		18 s	
Nominal force	2800 N							
Travel	20 mm				40 mm			
Enclosure	IP 54							
Process medium max.t.	220°C (higher temperature with Bellows only)							
Ambient and actuator's surface temperature range	-15 to 50°C							
Ambient humidity range	0 - 95 % relative humidity							
Weight	8,4 kg		8,9 kg		10 kg		10,5 kg	

Accessories

Pair of auxiliary switches ASC9.3

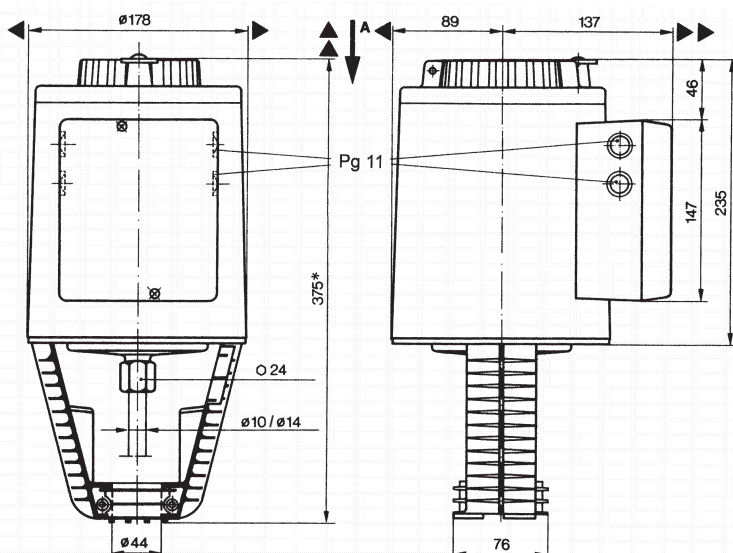
Potentiometer 1000 Ω ASZ7.3 *)

Potentiometer 135 Ω ASZ7.31 *)

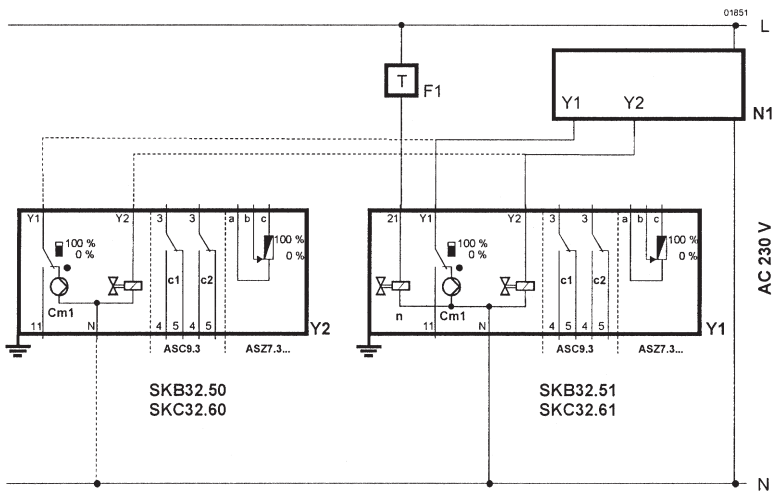
Potentiometer 200 Ω ASZ7.32 *)

*) 1 potentiometer can be used for 1 actuator only

Dimensions of actuator

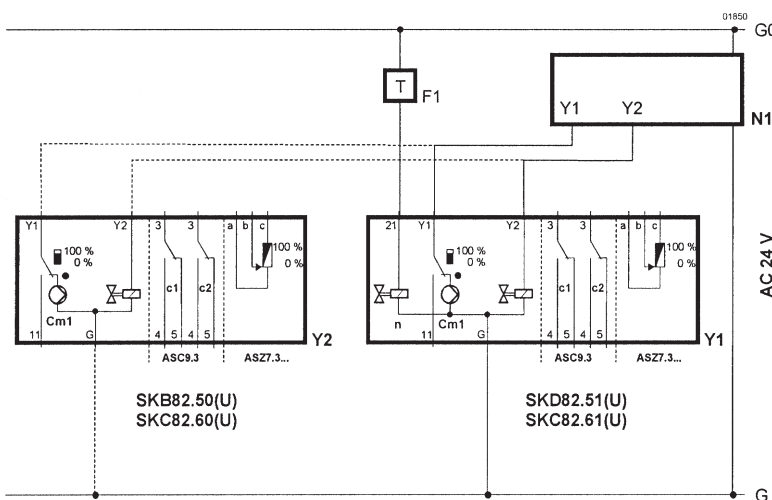


Wiring diagram of actuators SKB 32..., SKC 32...



- F1 safety thermostat
- N1 regulator
- Y1/2 actuators
- C1/2 switches
- Cm1 end switch
- ASC9.3 double auxiliary switch
- ASZ7.3... potentiometer
- L phaseG system potential (SP)
- G0 system neutral (SN)
- N zero
- Y1 opening of control valve
- Y2 closing of control valve
- 11 control signal of sequence
- 21 fail-safe function

Wiring diagram of actuators SKB 82..., SKC 82...



- F1 safety thermostat
- N1 regulator
- Y1/2 actuators
- C1/2 switches
- Cm1 end switch
- ASC9.3 double auxiliary switch
- ASZ7.3... potentiometer
- G system potential (SP)
- G0 system neutral (SN)
- N zero
- Y1 opening of control valve
- Y2 closing of control valve
- 11 control signal of sequence
- 21 fail-safe function



HLD, HLF HLG, HLI

**Electrohydraulic actuators
SKB 60 and SKB 62...
SKC 60 and SKC 62...
Siemens (Landis & Staefa)**

Technical data

Type	SKB 60	SKB 62	SKB 62UA ^{*)}	SKC 60	SKC 62	SKC 62UA ^{*)}
Suitable for valves	RV 113 L, S					
Voltage	24 V					
Frequency	50...60 Hz					
Power consumption	13 VA	17 VA		24 VA	28 VA	
Control	0 - 10 V, 4 - 20 mA, 0 - 1000Ω					
Running time open	120 s			120 s		
closed	15 s			20 s		
Fail-safe action time	---	15 s		---	20 s	
Nominal force	2800 N					
Travel	20 mm			40 mm		
Enclosure	IP 54					
Process medium max.t.	220°C (higher temperature with Bellows only)					
Ambient and actuator's surface temperature range	-15 to 55°C					
Ambient humidity range	0 - 95 % relative humidity					
Weight	8,6 kg			10 kg		

^{*)} UA ... version with improved electronics

Accessories

Auxiliary switch 24 V ASC1.6

Description

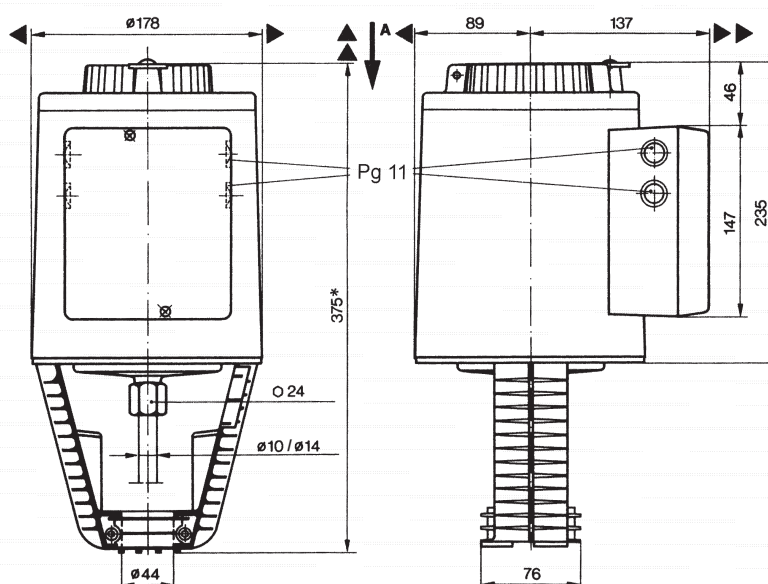
Each actuator with continuous control signal is equipped with ACT control technology enabling the following features as standard:

- stroke range calibration
- state indication via LED
- flow characteristic selection (log / lin)
- selection of control signal at Y terminal
- feedback signal at U terminal corresponding to control signal at Y terminal
- forced control at Z terminal

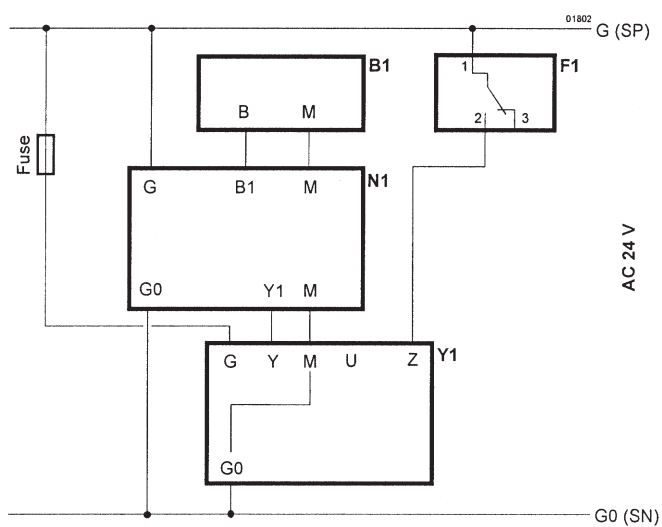
Version with improved electronics (UA) further enables:

- inversion of control signal
- sequence control
- stroke limiting

Dimensions of actuator

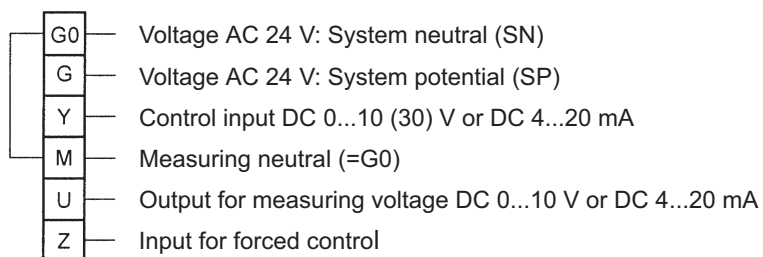


Wiring diagram of actuators

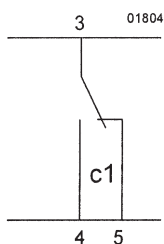


B1 sensor
 F1 safety thermostat
 N1 regulator
 Y1 actuator

Connection terminals



Auxiliary contact ASC1.6





Electric actuators NV..., SV..., EV..., RV... Belimo

Technical data

Type	NV230A-RE	NV24A-RE	NV24A-MP-RE	NVC24A-MP-RE	NVK24A-3-RE	NVK24A-MP-RE
Suitable for valves	RV 113 R, M					
Voltage	AC 230 V	AC/DC 24 V				
Frequency	50 / 60 Hz					
Motor power / Sizing	2 W / 4,5 VA	1,5 W / 3 VA	3,5 W / 5,5 VA	2,5 W / 6 VA		
Control	3 - position		DC (0)2...10V adjustable		3 - position <small>DC (0)2...10V adjustable</small>	
Running time (for 20 mm)	150 s		35 s		150 s	
Fail-safe action time			---		35 s	
Fail-safe function			---		NC, NO, adjustable	
Nominal force	1000 N					
Travel	20 mm					
Enclosure	IP 54					
Process medium max. temperature	+5 ... 150°C					
Ambient temperature range	0 to 50 C					
Ambient humidity limit	5 ... 95 %					
Weight	2,6 kg		2,5 kg	2,6 kg	2,8 kg	

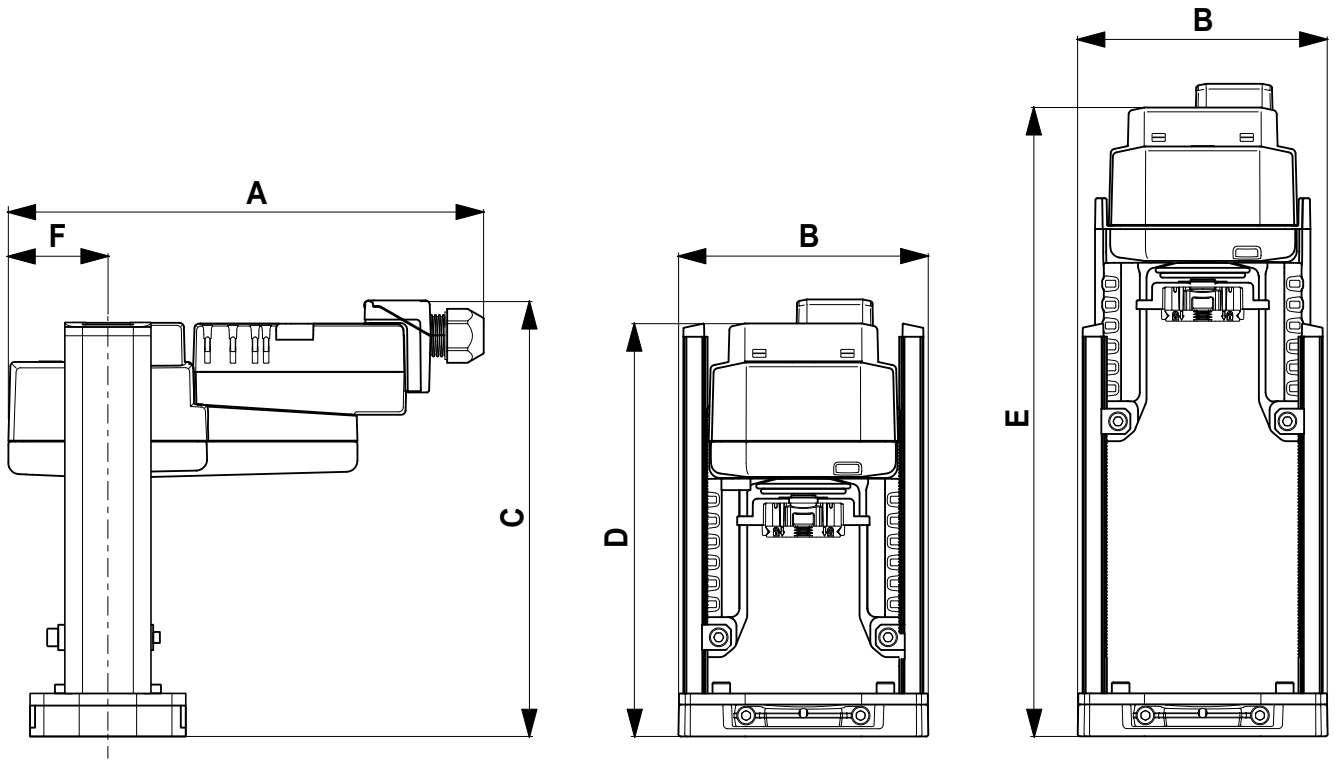
Type	NVK230A-3-RE	NVKC24A-MP-RE	SV24A-MP-RE	SVC230A-RE	SV24A-RE	SVC24A-MP-RE
Suitable for valves	RV 113 R, M					
Voltage	AC 230 V	AC/DC 24 V		AC 230 V	AC/DC 24 V	
Frequency	50 / 60 Hz					
Motor power / Sizing	2 W / 4,5 VA	4,5 W / 9 VA	2 W / 3,5 VA	2 W / 4 VA	2,5 W / 5 VA	4 W / 6 VA
Control	3 - position	DC (0)2...10V adjustable		3 - position		<small>DC (0)2...10V adjustable</small>
Running time (for 20 mm)	150 s	35 s	150 s		35 s	
Fail-safe action time	35 s				---	
Fail-safe function	NC, NO, adjustable				---	
Nominal force	1000 N				1500 N	
Travel	20 mm					
Enclosure	IP 54					
Process medium max. temperature	+5 ... 150 C					
Ambient temperature range	0 to 50 C					
Ambient humidity limit	5 ... 95 %					
Weight	2,9 kg	2,8 kg			2,6 kg	

Type	EV230A-RE	EV24A-RE	EV24A-MP-RE	EVC24A-MF-RE	RV24A-MF-RE
Suitable for valves	RV 113 R, M				
Voltage	AC 230 V	AC/DC 24 V			
Frequency	50 / 60 Hz				
Motor power / Sizing	5,5 W / 9,5 VA	2 W / 4,5 VA	4 W / 6 VA	11 W / 18 VA	6 W / 11 VA
Control	3 - position		DC (0)2...10V adjustable		
Running time (for 20 mm)	150 s			35 s	150 s
Fail-safe action time	---				
Fail-safe function	---				
Nominal force	2500 N			4500 N	
Travel	40 mm				
Enclosure	IP 54				
Process medium max. temperature	+5 ... 150°C				
Ambient temperature range	0 to 50°C				
Ambient humidity limit	5 ... 95 %				
Weight	7,4 kg			7,5 kg	

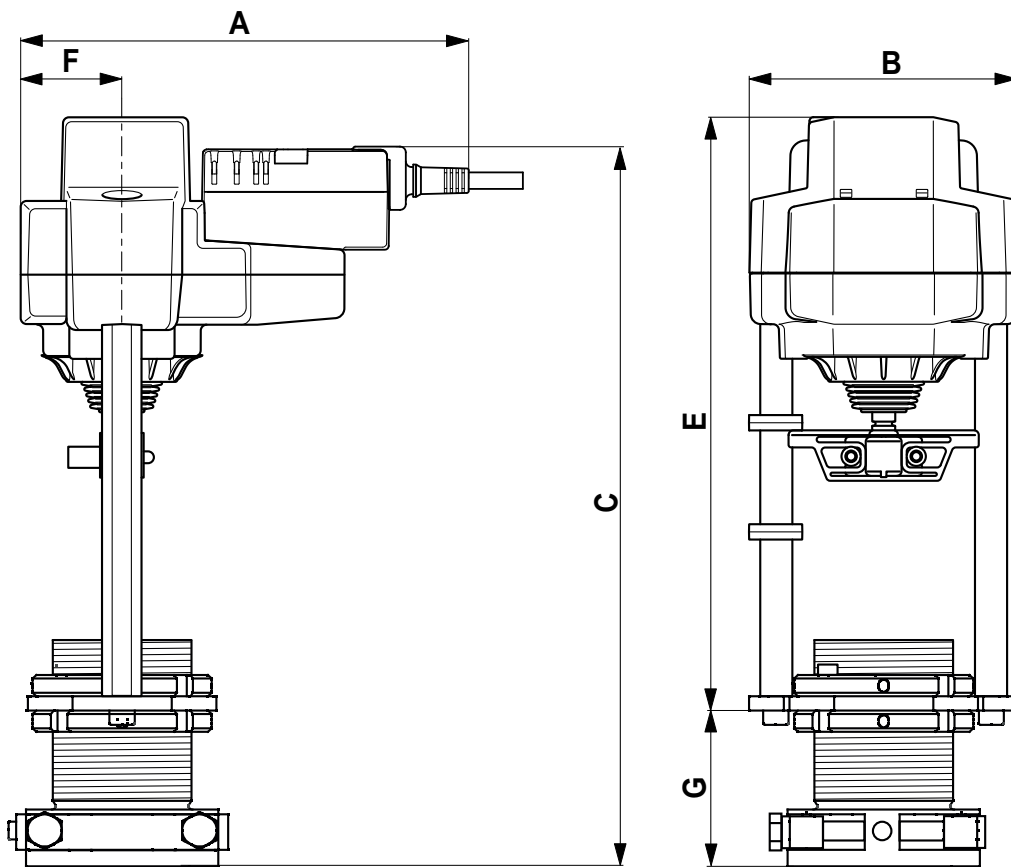
Note: The specification and technical data are informative.
Detailed and latest info you can find on www.belimo.ch

Dimensions of actuators

Type	Dimensions [mm]							drawing
	A	B	C	D	E	F	G	
NV230A-RE	193	113	200	190	290	45	---	draw. 1
NV24A-RE	193	113	200	190	290	45	---	
NV24A-MP-RE	215	113	200	190	290	45	---	
NVC24A-MP-RE	215	113	200	190	290	45	---	
NVK24A-3-RE	244	113	217	207	307	45	---	
NVK24A-MP-RE	244	113	217	207	307	45	---	
NVK230A-3-RE	250	113	209	207	307	45	---	draw. 1
NVKC24A-MP-RE	244	113	217	207	307	45	---	
SV24A-MP-RE	215	113	200	190	290	45	---	
SV230A-RE	215	113	200	190	290	45	---	
SV24A-RE	193	113	200	190	290	45	---	
SVC24A-MP-RE	215	113	200	190	290	45	---	
EV230A-RE	227	140	342...408	---	315	53	44...110	draw. 2
EV24A-RE	205	140	342...408	---	315	53	44...110	
EV24A-MP-RE	227	140	342...408	---	315	53	44...110	
EVC24A-MF-RE	233	140	344...410	---	315	53	44...110	
RV24A-MF-RE	233	140	344...410	---	315	53	44...110	



draw. 1: Actuators NV..., SV...



draw. 2: Actuators EV..., RV...

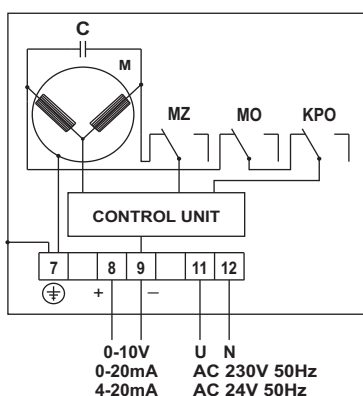
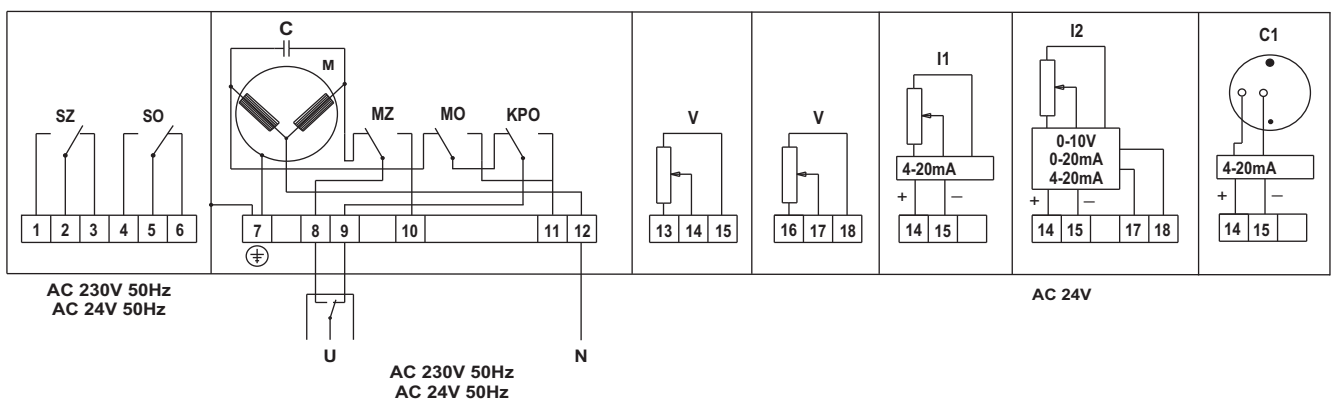


Electric actuators PTN 2 Ekorex

Technical data

Type	PTN 2.20	PTN 2.32	PTN 2.40
Suitable for valves	RV 113 R, M		
Voltage	230 V + 6 %, -12 % or 24 V + 10 %, -15 % AC		
Frequency	50 Hz		
Power consumption	Max. 19 VA		
Control	3 - position control, (0) 4 - 20 mA, 0 - 10 V		
Nominal force	2000 N	3200 N	4000 N
Travel	20 and 40 mm		
Enclosure	IP 65		
Process medium max. temperature	Acc. to used valve		
Ambient temperature range	-20 to 60°C		
Ambient humidity range	5 to 100 % with condensation		
Weight	4 kg		

Wiring diagram of actuator



- MO - power switch for "OPEN" position
- MZ - power switch for "CLOSED" position
- SO - signalisation switch for "OPEN" position
- SZ - signalisation switch for "CLOSED" position
- KPO - terminal position switch for "OPEN" position
- M - motor
- C - capacitor
- V - resistance transmitter 100 Ω
- I1 - resistance transmitter with convertor 4-20 mA - 2-wire execution
- I2 - resistance transmitter with convertor - separate feeding 24V AC

Specification of actuator PTN 2

PTN 2	X	X	X	X	X	X	X	X	Nominal force [kN]	Resetting speed [mm/min ⁻¹]
	2	0							2	10, 16, 25, 32
	3	2							3,2	10, 16, 25, 32
	4	0							4	10, 16, 25
		0						230 V, 50 Hz	Motor supply voltage	
		2						24 V, 50 Hz		
			1					10	Resetting speed [mm.min ⁻¹]	
			2					16		
			3					25		
			4					32		
			0					Without equipment	Independent feeding 24 V	
			1					Output 0 - 10 V		
			2					Output 0 - 20 mA		
			3					Output 4 - 20 mA		
			4					Output 4 - 20 mA		2 - wire connection
			5					Output 0 - 100 Ω 1x		Resistance output signal
			6					Output 0 - 100 Ω 2x		
			7					Feedback - Capacity transmitter 4 - 20 mA		
			7				Flange D44	stem notch D7		stroke 20 mm
			8				Flange D44	stem notch D10		stroke 40 mm
			0				MO; MZ		Number of microswitches	
			2				MO; MZ; SO; SZ			
			9				According to agreement			
			4				20	Draw bar stroke [mm]		
			7				40			

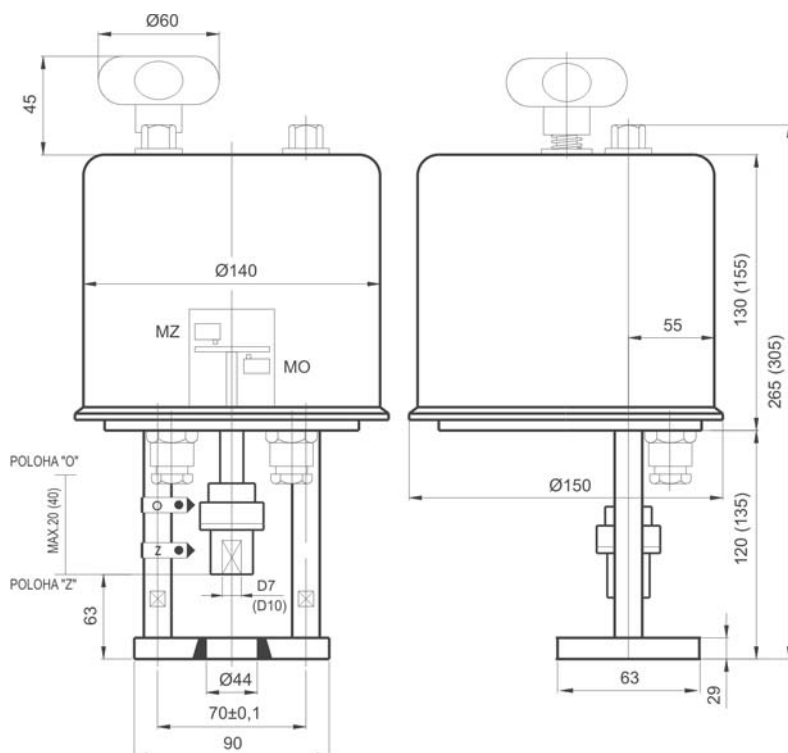
NOTE:

The table applies to actuator with 3-position control.

It is possible to supply actuator with control signal of 0 - 10 V, 0 - 20 mA, 4 - 20 mA and with manual operating outside the housing.

(example of marking: PTN 2 - XX.XX.XX.XX / control signal 4 - 20 mA)

Dimensions of actuator PTN 2





Electric actuators ANT40.11 LDM

Description

The actuators are designed for regulators with continuous or contact output. They are suitable to actuate two-way and three-way valves series RV 113 and RV 2xx. The actuator consists of cover made of self-extinguishing plastic housing a stepping motor, control unit with SUT technology, signalisation LEDs and no-maintenance gear made of sintered steel. The connection to its valve is provided by stainless steel columns and yoke made of light metal alloy. Electric connection (max. 2,5 mm²) is provided with the aid of screw clamps. There are three self-breaking openings for cable glands M20x1,5 (2x) and M16x1,5. One cable gland M20x1,5 is a part of standard delivery.

Application

Based on a connection variant (see wiring diagram), the actuator can be used as floating (0...10 V or 4...20 mA), or 2-position (open-closed) or 3-position (open-stop-closed). Manual operating is available with outer handle. The motor is disconnected when the hand crank is folded back. When the handle is positioned back, the actuator resumes into required position (without initialization). If the hand crank remains folded out, the actuator keeps its set position.

Installation position

Upright, vertical, max. horizontal.

SUT Technology

The actuator can be controlled by regulators with continuous (0...10 V and/or 4...20 mA) or contact (2-position or 3-position) output. The actuator feeding is optional. The running speed and output characteristic is also optional.

Features

- electronic switch off based on the running force registered by stops inside appliance or valve.
- automatic adapting to the valve stroke
- code switch for characteristic and running time selection
- hand crank for manual operating with swithing the motor off as a start for new initiation
- possibility of direction change of control signal (feeding voltage at terminal 2a or 2b)

Technical data

Type	ANT40.11	
Suitable for valves	RV 113 R, M	
Specification code	EVH	
Execution	Electric actuator with SUT technology	
Voltage	24 V AC \pm 20%, 50 - 60 Hz; 24 V DC \pm 15%; 230 V AC \pm 15%	
Frequency	50 Hz	
Power consumption	18 VA	
Control	0 - 10 V, 4 - 20 mA, 3-pos., 2-pos.	3-position
Open-close running time	Adjustable 2, 4, 6 s.mm ⁻¹	
Nominal force	2500 N	
Travel	20 a 40 mm	
Enclosure	IP 66	
Process medium max. temperature	200°C, with a mid piece up to 240°C	
Ambient temperature range	-10 to 55°C	
Ambient humidity range	< 95 % relative humidity	
Weight	4,5 kg	

Accessories

0313529 001	Split range unit to set sequences
0372332 001	Module, plug-in type, for 230 V \pm 15% voltage supply and 3-point activation, additional power 2 VA
0372333 001	2 auxiliary changeover switches, continuously adjustable, additional load 5(2) A, 12 - 250 V, 3(1) A, 12 - 250 V AC ¹⁾
0372333 002	2 auxiliary changeover contacts with gold-plated contacts for low currents from 1 mA, max. 30 V, 3(1) A, 12 - 250 V AC ¹⁾
0372334 001	Potentiometer 2000 Ω , 1 W, 24 V ¹⁾
0372334 002	Potentiometer 130 Ω , 1 W, 24 V ¹⁾
0372334 006	Potentiometer 1000 Ω , 1 W, 24 V ¹⁾
0372336 910	Mid piece (required for medium above 200 up to 240°C)
0386263 001	Screwed cable gland M16 x 1,5
0386263 002	Screwed cable gland M20 x 1,5 (1 piece of cable gland is standard part of actuator delivery)

¹⁾one option of accessory can be used only

Operation

Initialisation and feedback signal

When used as a continuous drive, the device initialises itself automatically. As soon as voltage is applied to the drive for the first time, it moves to the lower limit stop on the valve, thus enabling automatic connection with the valve spindle. Then it moves to the upper limit stop and the value is recorded and saved with the help of a path measurement system. The control signal and the feedback signal are adjusted to this effective stroke. There is no re-initialisation if the voltage is interrupted or if the voltage supply is removed. The values remain saved.

To re-initialise, the drive must be connected to the voltage. To trigger an initialisation, fold the hand crank out and back in again twice within 4 seconds. Both the LEDs will then flash red. During initialisation, the feedback signal is inactive, or it corresponds to a value of "0". Initialisation uses the shortest run time. The re-initialisation is only valid once the entire procedure has been completed. Folding the hand crank out again will interrupt the procedure.

If the valve drive detects a blockage, it will report this by setting the feedback signal to 0 V after approx. 90 s. However, the drive will try to overcome the blockage during this time. If it is possible to overcome the blockage, the normal control function is activated again and the feedback signal is resumed.

No initialisation is performed with a 2-position or 3-position control. The feedback signal is inactive.

Connection as a 2-point valve drive (24 V)

This activation (OPEN/CLOSED) can take place via two cables. The voltage is applied to terminals 1 and 2a. Applying the voltage (24 V) to terminal 2b opens the valve's control passage. After this voltage has been switched off, the drive moves to the opposite end position and closes the valve. The electronic motor switch-off responds in the end positions (valve limit stop, or when maximum stroke is reached) or in case of overload (no limit switches).

The coding switch can be used to set the run times. The characteristic curve cannot be selected in this case (resulting in the characteristic curve for the valve). Terminals 3i, 3u and 44 must not be connected.

Connection as a 3-point valve drive (24 V)

Applying voltage to terminal 2a (or 2b) makes it possible to move the valve to any desired position. If voltage is applied to terminals 1 and 2b, the valve shaft moves out and opens the valve. It moves in and closes the valve when the electrical circuit is closed over terminals 1 and 2a.

In the end positions (at the valve stop, or when the maximum stroke is reached) or in case of an overload, the electronic motor switch-off responds (no limit switches). The direction of the stroke can be changed by transposing the connections.

The coding switch is used to set the run times. In this case, the characteristic curve cannot be selected (resulting in the characteristic curve for the valve). Terminals 3i, 3u and 44 must not be connected.

Connection as a 2-point/3-point or continuous activation of valve drive with 230 V (accessory 0372332)

The accessory module is plugged on in the connection area and is then connected for 3-position mode. If this accessory is used, only control in 3-position mode is available. The coding switch on the baseboard can be used to select the run times. The characteristic curve cannot be selected; the characteristic curve for the valve is applicable.

The module has a built-in switch which is automatically moved into the correct position when the module is installed. On this drive (which has no spring return action) the switching lever is in the lower position.

The accessory module is not suitable for 2-position activation.

Connection as continuous control (0...10 V and/or 4...20 mA) - (24V)

The built-in positioner controls the drive depending on the controller output signal y.

The control signal used is a voltage signal (0...10 V $-$) at terminal 3u, or a current signal at terminal 3i. If a control signal is present at both terminals (3u (0...10 V) and 3i (4...20 mA)) simultaneously, the input with the higher value takes priority.

Mode of action 1 (mains voltage to internal connection 2a): as the output signal increases, the valve shaft moves out and opens the valve (control passage).

Mode of action 2 (mains voltage to internal connection 2b): as the output signal increases, the valve shaft moves in and closes the valve (control passage).

The starting point and the control span are fixed. To set partial ranges (and only for voltage input 3u), a split range unit is available as an accessory (see the split range unit function); this unit is intended for installation in the drive.

After the voltage supply is applied and after initialisation, the drive moves to each valve stroke between 0% and 100%, depending on the control signal. The electronics and the path measurement system ensure that no stroke is lost, and the drive does not require re-initialisation at intervals. When the end positions are reached, the position is checked, corrected as necessary and stored again. This ensures parallel running of several drives of the same SUT type. Feedback signal y0 = 0...10 V corresponds to the effective valve stroke of 0 to 100%. If the 0...10 V control signal is interrupted in direction of action

1, the spindle retracts completely and the valve is closed. So that the valve can be opened (direction of action 1), a voltage of 10 V must be connected between terminals 1 and 3u, or it is necessary to switch over to direction of action 2.

The coding switch can be used to set the characteristic for the valve. Equal-percentage and square characteristics can only be produced if the device is used as a continuous-action drive. Further switches can be used to select the run-times (can be used for the 2-position, 3-position or continuous functions).

LED display

Both LEDs flashing red: initialisation procedure
Upper LED lit red: upper limit stop or "CLOSED" position reached
Lower LED lit red: lower limit stop or "OPEN" position reached
Upper LED flashing green: drive running, moving towards "CLOSED" position
Upper LED lit green: drive stationary, last direction of running "CLOSED"
Lower LED flashing green: drive running, moving towards "OPEN" position
Lower LED lit green: drive stationary, last direction of running "OPEN"
Both LEDs are lit green: waiting time after switching on, or after emergency function
No LED lit: no voltage supply (terminal 2a or 2b)
Both LEDs are flashing red and green: drive is in manual mode

Accessories application

Split range unit

This accessory can be built into the drive or can be accommodated externally in an electrical distribution box. The starting point U_0 and the control span ΔU can be set with the help of a potentiometer. This makes it possible to operate several regulating units in sequence or in a cascade with the control signal from the controller. The input signal (partial range) is converted into an output signal of 0...10 V.

Auxiliary changeover switch

Auxiliary changeover switch double 0372333 001

- Switching capacity max. 250 V~, min. current 250 mA at 12 V (or 20 mA at 20 V)
- Switching capacity max. 12...30 V=, max. current 100 mA

Auxiliary changeover switch double gold 0372333 002

- Switching capacity max. 250 V~, min. current 1 mA at 5 V
- Switching capacity max. 0.1...30 V=, current 1...100 mA

Even if used only once above 10 mA or up to 50 V, the gold coating will be destroyed. The switch can then be used only for higher switching outputs.

Engineering and installation notes

Penetration of condensate or dripping water, etc. along the valve spindle into the drive should be avoided.

The valve is plugged directly onto the drive and is fixed with screws (no further settings are needed). The drive is automatically connected to the valve spindle. When the device is delivered, the drive spindle is in the middle position.

The housing contains three breakthrough-type cable leadthroughs which are broken open automatically when the cable leadthrough is screwed in. The stepping motor/electronics concept guarantees parallel running of several valve drives of the same type. The cross-section of the connecting cable should be selected according to the line length and the number of drives. With five drives connected in parallel and a line length of 50 m, we recommend using a cable cross-section of 1.5 mm² (power consumption of the drive × 5). The drive can be assembled with a maximum of one 230 V module, one additional accessory component (auxiliary switch or potentiometer) and the split range unit.

Warnings

If the temperature of the medium in the valve is high, the drive columns and the shaft may also reach high temperatures. It is necessary to ensure that the maximum ambient temperature be max. 55°C during operation. If the temperature exceeds this limit, it is recommended to insulate the valve (eg. IKA insulation, see catalogue sheet 01-09.6).

If a failure of the final control element could cause damage, additional protective precautions must be taken.

CE - Conformity

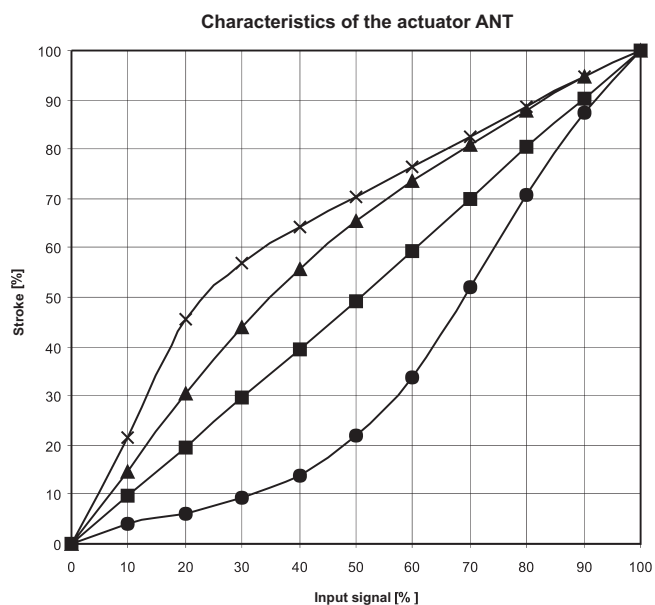
Directive EMC 2004/108/ES	Low Voltage Directive 2006/95/ES
EN 61000-6-2 *)	EN 60730 1
EN 61000-6-4	EN 60730-2-14
	Over-voltage category III
	Degree of pollution III

*) HF immunity, limitation of feedback signal between 80 MHz a 1000 Mhz criterion B, otherwise criterion A

Switch coding

Actuator characteristic (switches 3 and 4)

- optional for actuators with floating control only



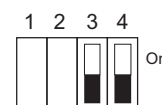
A (Linear)



B (Quadratic)




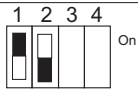
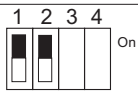
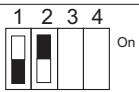
C (Logarithmic)



D (Equal percentage)

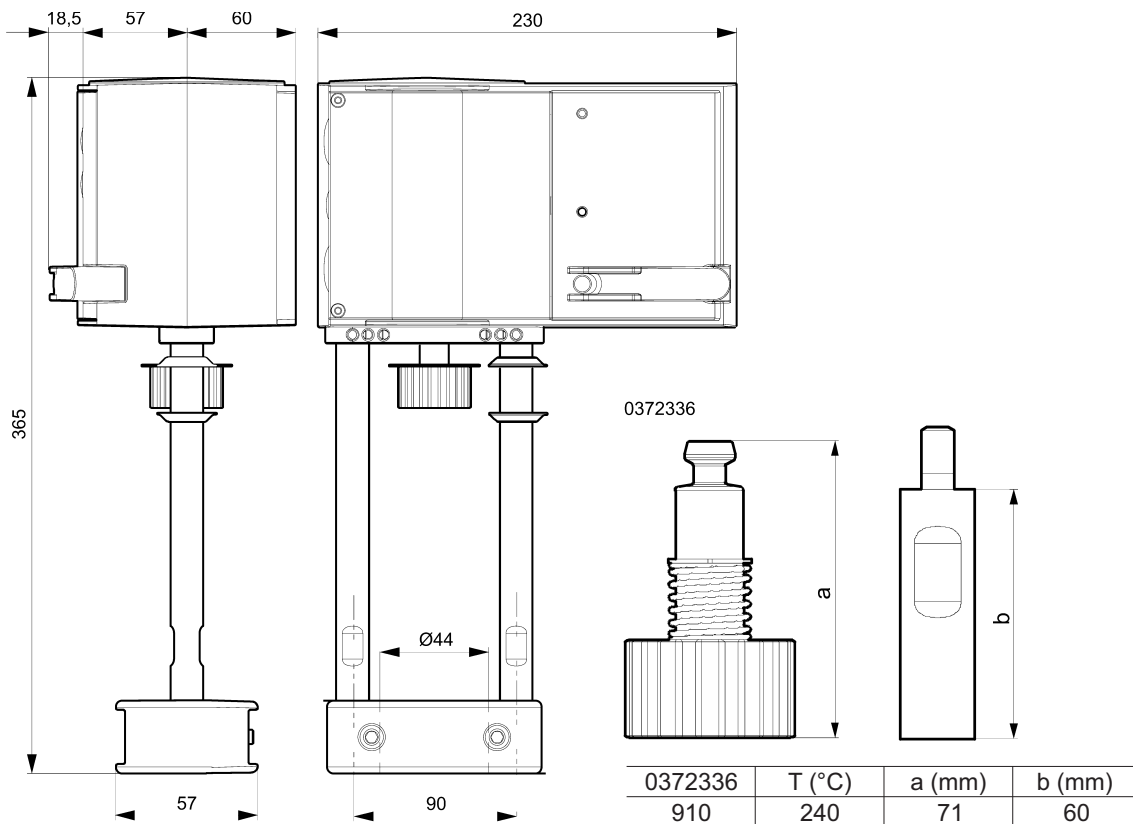
Run time (switches 1 and 2)

- optional for all types of control of the actuator

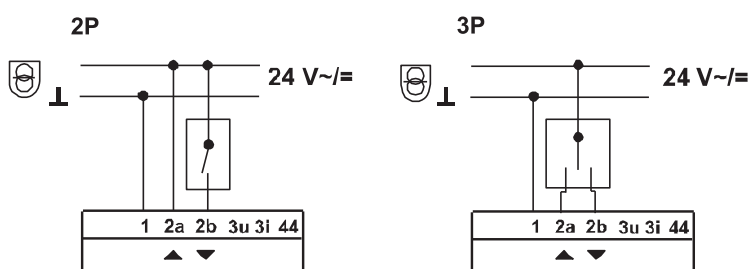
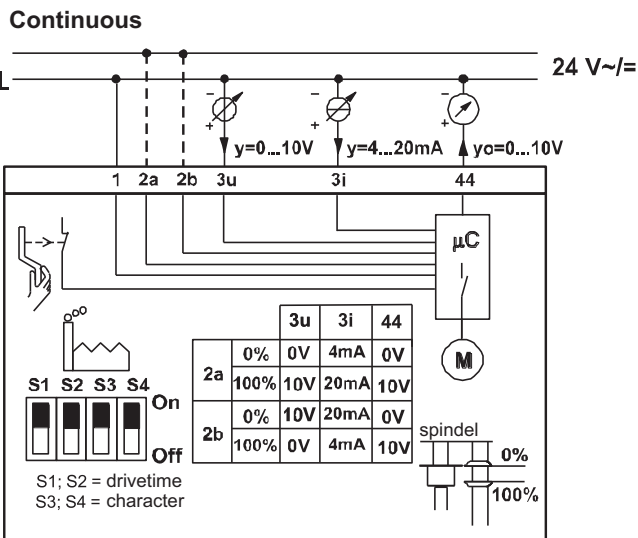
Run time per mm	Switch coding	Run time for 20 mm stroke	Run time for 40 mm stroke
2 s / mm	 On	40 s ± 1	80 s ± 2
4 s / mm	 On	80 s ± 2	160 s ± 4
6 s / mm	 On  On	120 s ± 4	240 s ± 8

Note: Data in bold mean factory settings

Dimensions of actuator and a mid piece for higher temperatures



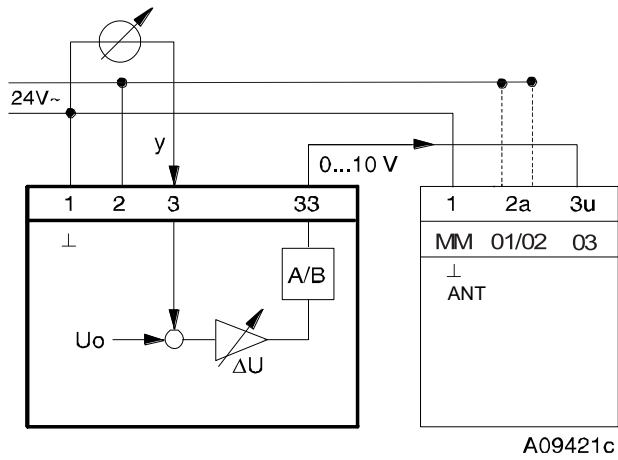
Wiring diagram of actuators



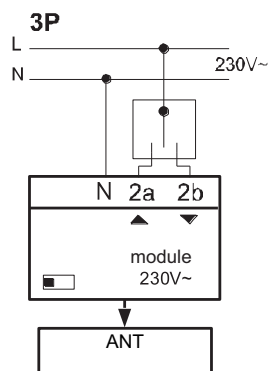
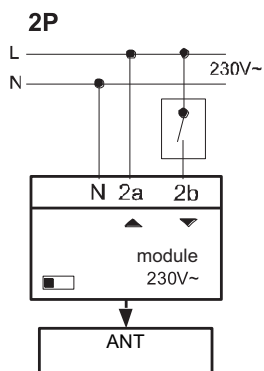
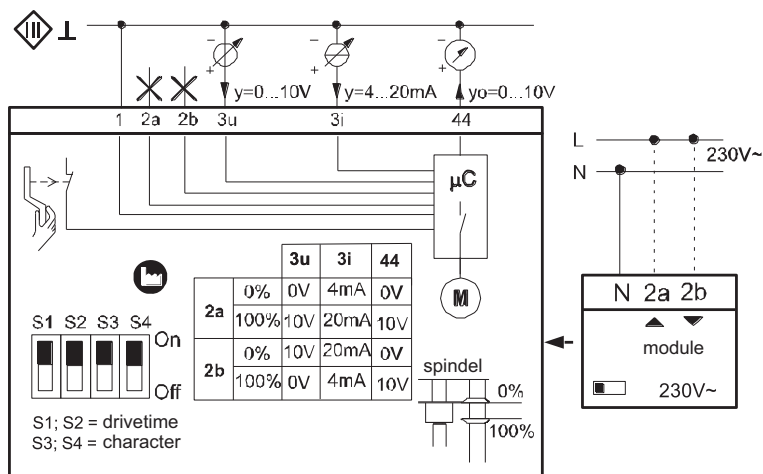
A10587a

Wiring diagram of accessories

0313529

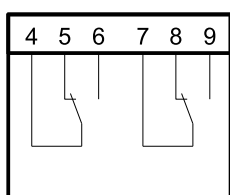


0372332001



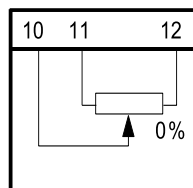
A10564a

0372333



A10376

0372334



A01363



Electric actuators ANT40.11S ANT40.11R LDM

Description

The actuator is designed for regulators with continuous or contact output. They are suitable for actuating two-way or three way valves series RV 113 and RV 2xx. The actuator is equipped with a spring ensuring the actuator runs into its defined end position in case of power supply failure or when the sensor of limit value is activated. The actuator consists of a cover made of self-extinguishing plastic housing stepping motor, control unit with SUT technology, signalisation LEDs and no-maintenance gear made of sintered steel and spring roll. The connection to its valve is provided by stainless steel columns and yoke made of light metal alloy. Electric connection (max. 2,5 mm²) is provided with the aid of screw clamps. There are three self-breaking openings for cable glands M20x1,5 (2x) and M16x1,5. One cable gland M20x1,5 is a part of standard delivery.

Application

Based on a connection variant (see wiring diagram), the actuator can be used as floating (0...10 V or 4...20 mA), or 2-position (open-closed) or 3-position (open-stop-closed). Manual operating is with outer hand crank. The motor is disconnected when the hand crank is folded out. When the hand crank is folded back, the actuator resumes into required position (without initialization). If the hand crank remains folded out, the actuator keeps its set position.

Installation position

Upright, vertical, max. horizontal.

Technical data

Type	ANT40.11S		ANT40.11R	
Specification code	EVI			
Execution	Electric actuator with spring return action and SUT technology			
Voltage	24 V AC \pm 20%, 50 - 60 Hz; 24 V DC \pm 15%; 230 V AC \pm 15%			
Frequency	50 Hz			
Power consumption	20 VA in operation mode, 7 VA out of operation			
Control	0-10 V, 4-20 mA, 3-pos., 2-pos.	3-position	0-10 V, 4-20 mA, 3-pos., 2-pos.	3-position
Open-close running time	Adjustable 2, 4, 6 s.mm ⁻¹			
Running time for fail-safe function	Acc. to stroke 15 - 30 s			
Fail-safe function	Indirect (NC)		Direct (NO)	
Nominal force	2000 N			
Stroke	20 a 40 mm			
Enclosure	IP 66			
Process medium max. temperature	200°C, with a mid piece up to 240°C			
Ambient temperature range	-10 to 55°C			
Ambient humidity range	< 95 % relative humidity			
Weight	6,1 kg			

SUT Technology

The actuator can be controlled by regulators with continuous (0...10 V and/or 4...20 mA) or contact (2-position or 3-position) output. The actuator feeding is optional. The running speed and output characteristic is also optional.

Features

- electronic switch off based on the running force registered by stops inside appliance or valve.
- automatic adapting to the valve stroke
- code switch for characteristic and running time selection
- hand crank for manual operating with swithing the motor off as a start for new initiation
- possibility of direction change of control signal (feeding voltage at terminal 2a or 2b)

Direct and indirect function of actuator

Direct function ensures that actuator stem extends (the valve opens) upon power supply failure.

Indirect function ensures that actuator stem retracts (the valve closes) upon power supply failure.

Accessories

0313529 001	Split range unit to set sequences
0372332 001	Module, plug-in type, for 230 V \pm 15% voltage supply and 3-point activation, additional power 2 VA
0372333 001	2 auxiliary changeover switches, continuously adjustable, additional load 5(2) A, 12 - 250 V, 3(1) A, 12 - 250 V AC ¹⁾
0372333 002	2 auxiliary changeover contacts with gold-plated contacts for low currents from 1 mA, max. 30 V, 3(1) A, 12 - 250 V AC ¹⁾
0372334 001	Potentiometer 2000 Ω , 1 W, 24 V ¹⁾
0372334 002	Potentiometer 130 Ω , 1 W, 24 V ¹⁾
0372334 006	Potentiometer 1000 Ω , 1 W, 24 V ¹⁾
0372336 910	Intermediate piece (required for medium above 200 up to 240°C)
0386263 001	Screwed cable gland M16 x 1,5
0386263 002	Screwed cable gland M20 x 1,5 (1 piece of cable gland is standard part of actuator delivery)

¹⁾one option of accessory can be used only

Operation

After a new start, or after a start following activation of the reset (terminal 21), up to 45 s of waiting time will pass before the drive is available again. Depending on the type of connection (see the wiring dia-gram), the device can be used as a continuous-action drive (0...10 V and/or 4...20 mA), a 2-point drive (open-closed) or a 3-position drive (open-stop-closed).

Initialisation and feedback signal

The drive initialises itself automatically, whether it is used in continuous-action, 2-position or 3-position mode. As soon as voltage is applied to the drive for the first time and the waiting period has elapsed, the drive moves to the lower limit stop on the valve, thus enabling automatic connection with the valve spindle. Then it moves to the upper limit stop, and the value is recorded and saved with the help of a path measurement system. The control signal and the feedback signal are adjusted to this effective stroke. After an interruption to the voltage or a spring return action, no re-initialisation is performed and the values are saved.

To re-initialise, the drive must be connected to the voltage. To trigger an initialisation, fold the hand crank out and back in again twice within 4 seconds. Both the LEDs will then flash red. During initialisation, the feedback signal is inactive, or it corresponds to a value of "0". Initialisation uses the shortest run time. The re-initialisation is only valid once the entire procedure has been completed. Folding the hand crank out again will interrupt the procedure.

If the valve drive detects a blockage, it will report this by setting the feedback signal to 0 V after approx. 90 s. However, the drive will try to overcome the blockage during this time. If it is possible to overcome the blockage, the normal control function is activated again and the feedback signal is resumed.

Spring return

If the voltage supply fails or is switched off, or if a monitoring contact responds, the brushless DC mo-tor releases the gear and the drive is moved into the respective end position (depending on the design version) by the pre-tensioned spring. As this happens, the control function of the drive is disabled for 45 s (both LEDs flash green) so that the end position can be reached in every case. The reset speed is controlled with the help of the motor so that there are no pressure surges in the line. The brushless DC motor has three functions: as a magnet to hold the position, as a brake (by acting as a generator) and as a motor for the control function. After a spring return function, the drive does not re-initialise itself.

Connection as a 2-position valve drive (24 V)

This activation (OPEN/CLOSED) can take place via two cables. The voltage is applied to terminals 1 2a and 21. Applying the voltage (24 V) to terminal 2b causes the coupling rod to extend and opens the valve. After this voltage has been switched off, the drive moves to the opposite end position and closes the valve. The electronic motor switch-off responds in the end positions (valve limit stop, or when maximum stroke is reached) or in case of overload (no limit switches).

The coding switch can be used to set the run times. The characteristic curve cannot be selected in this case (resulting in the characteristic curve for the valve). The feedback signal is active as long as the initialisation is performed and there is voltage present at terminal 21. Terminals 3i, 3u and 44 must not be connected.

Connection as a 3-position valve drive (24 V)

Applying voltage to terminal 2a (or 2b) makes it possible to move the valve to any desired position. If voltage is applied to terminals 1 and 2b, the valve shaft moves out and opens the valve. It moves in and closes the valve when the electrical circuit is closed over terminals 1 and 2a.

In the end positions (at the valve stop, or when the maximum stroke is reached) or in case of an overload, the electronic motor switch-off responds (no limit switches). The direction of the stroke can be changed by transposing the connections.

The coding switch is used to set the run times. In this case, the characteristic curve cannot be selected (resulting in the characteristic curve for the valve). The feedback signal is active as long as the initialisation is performed and there is voltage present at terminal 21. Terminals 3i, 3u must not be connected.

Connection as a 3-position valve drive with 230 V

The accessory module is plugged on in the connection area and is then connected for 3-position mode. If this accessory is used, only control in 3-position mode is available. The coding switch on the baseboard can be used to select the run times. The characteristic curve cannot be selected; the characteristic curve for the valve is applicable.

The module has a built-in switch which is automatically moved into the correct position when the module is installed. With this application, the switching lever is in the upper position.

The accessory module is not suitable for 2-position activation.

Connection to a control voltage (0...10 V and/or 4...20 mA)

The built-in positioner controls the drive depending on the controller output signal.

The control signal used is a voltage signal (0...10 V-) at

is present at both terminals (3u (0...10 V) and 3i (4...20 mA)) simultaneously, the input with the higher value takes priority.

Mode of action 1 (mains voltage to internal connection 2a): as the output signal increases, the valve shaft moves out and opens the valve (control passage).

Mode of action 2 (mains voltage to internal connection 2b): as the output signal increases, the valve shaft moves in and closes the valve (control passage).

The starting point and the control span are fixed. To set partial ranges (and only for voltage input 3u), a split range unit is available as an accessory (see the split range unit function); this unit is intended for installation in the drive.

After the voltage supply is applied and after initialisation, the drive moves to each valve stroke between 0% and 100%, depending on the control signal. The electronics and the path

measurement system ensure that no stroke is lost, and the drive does not require re-initialisation at intervals. When the end positions are reached, the position is checked, corrected as necessary and stored again. This ensures parallel running of several drives of the same type. Feedback signal $y_0 = 0...10$ V corresponds to the effective valve stroke of 0 to 100%.

If the control signal 0...10 V is interrupted in mode of action 1, the spindle moves in completely and the valve is closed. So that the valve can be opened (direction of action 1), a voltage of 10 V must be connected between terminals 1 and 3u, or it is necessary to switch over to direction of action 2.

The coding switch can be used to set the characteristic curve for the valve: linear, equal percentage or quadratic. This characteristic curve can only be generated if the drive is used as a continuous drive. Additional switches can be used to select the run times (applicable for 2-position, 3-position or continuous function).

LED display

Both LEDs flashing red: initialisation procedure

Upper LED lit red: upper limit stop or "CLOSED" position reached

Lower LED lit red: lower limit stop or "OPEN" position reached

Upper LED flashing green: drive running, moving towards "CLOSED" position

Upper LED lit green: drive stationary, last direction of running "CLOSED"

Lower LED flashing green: drive running, moving towards "OPEN" position

Lower LED flashing green: drive stationary, last direction of running "OPEN"

Both LEDs are lit green: waiting time after switching on, or after emergency function

No LED lit: no voltage supply (terminal 2a or 2b)

Both LEDs are flashing red and green: drive is in manual mode

Accessories application

Split range unit

This accessory can be built into the drive or can be accommodated externally in an electrical distribution box. The starting point U_0 and the control span ΔU can be set with the help of a potentiometer. This makes it possible to operate several regulating units in sequence or in a cascade with the control signal from the controller. The input signal (partial range) is converted into an output signal of 0...10 V.

Auxiliary changeover switch

Auxiliary changeover switch double 0372333 001

- Switching capacity max. 250 V~, min. current 250 mA at 12 V (or 20 mA at 20 V)
- Switching capacity max. 12...30 V=, max. current 100 mA

Auxiliary changeover switch double gold 0372333 002

- Switching capacity max. 250 V~, min. current 1 mA at 5 V
- Switching capacity max. 0.1...30 V=, current 1...100 mA

Even if used only once above 10 mA or up to 50 V, the gold coating will be destroyed. The switch can then be used only for higher switching outputs.

Engineering and installation notes

Penetration of condensate or dripping water, etc. along the valve spindle into the drive should be avoided.

The valve is plugged directly onto the drive and is fixed with screws (no further settings are needed). The drive is automatically connected to the valve spindle. When the device is delivered, the drive spindle is in the middle position.

The housing contains three breakthrough-type cable leadthroughs which are broken open automatically when the cable leadthrough is screwed in. The stepping motor/electronics concept guarantees parallel running of several valve drives of the same type. The cross-section of the connecting cable should be selected according to the line length and the number of drives. With five drives connected in parallel and a line length of 50 m, we recommend using a cable cross-section of 1.5 mm² (power consumption of the drive \times 5). The drive can be assembled with a maximum of one 230 V module, one additional accessory component (auxiliary switch or potentiometer) and the split range unit.

Warnings

If the temperature of the medium in the valve is high, the drive columns and the shaft may also reach high temperatures. It is necessary to ensure that the maximum ambient temperature be max. 55°C during operation. If the temperature exceeds this limit, it is recommended to insulate the valve (e.g. IKA insulation, see catalogue sheet 01-09.6).

If a failure of the final control element could cause damage, additional protective precautions must be taken.

CE - Conformity

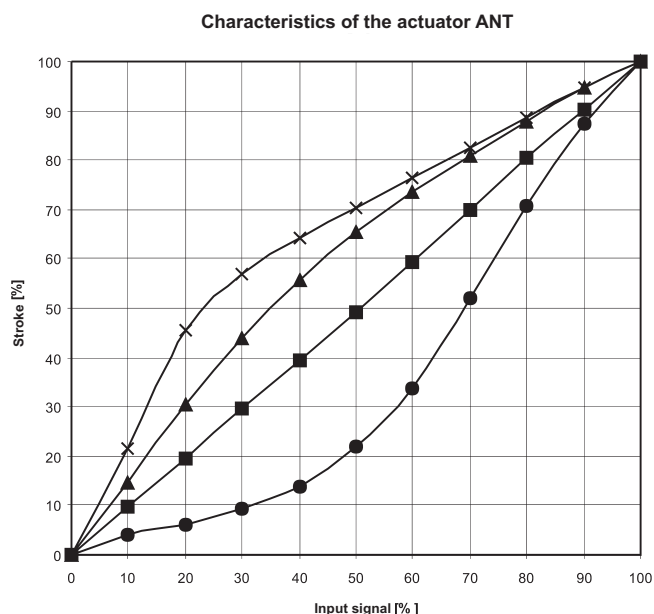
EMV Directive 2004/108/ES	Low Voltage Directive 2006/95/ES
EN 61000-6-2 *)	EN 60730 1
EN 61000-6-4	EN 60730-2-14
	Over-voltage category III
	Degree of pollution III

*) HF immunity, limitation of feedback signal between 80 MHz a 1000 Mhz criterion B, otherwise criterion A

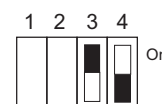
Switch coding

Actuator characteristic (switches 3 and 4)

- optional for actuators with floating control only



A (Linear)



B (Quadratic)



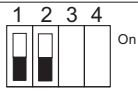
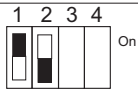
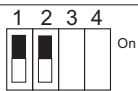
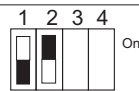
C (Logarithmic)



D (Equal percentage)

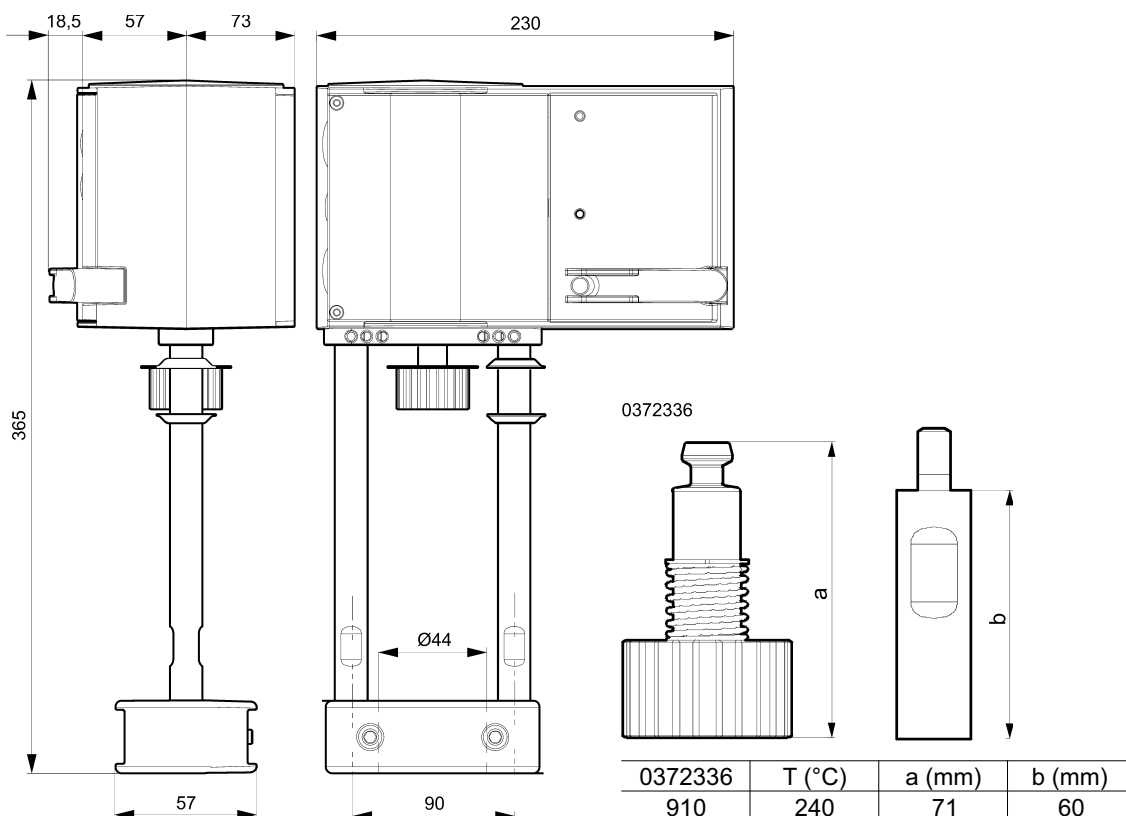
Run time (switches 1 and 2)

- optional for all types of control of the actuator

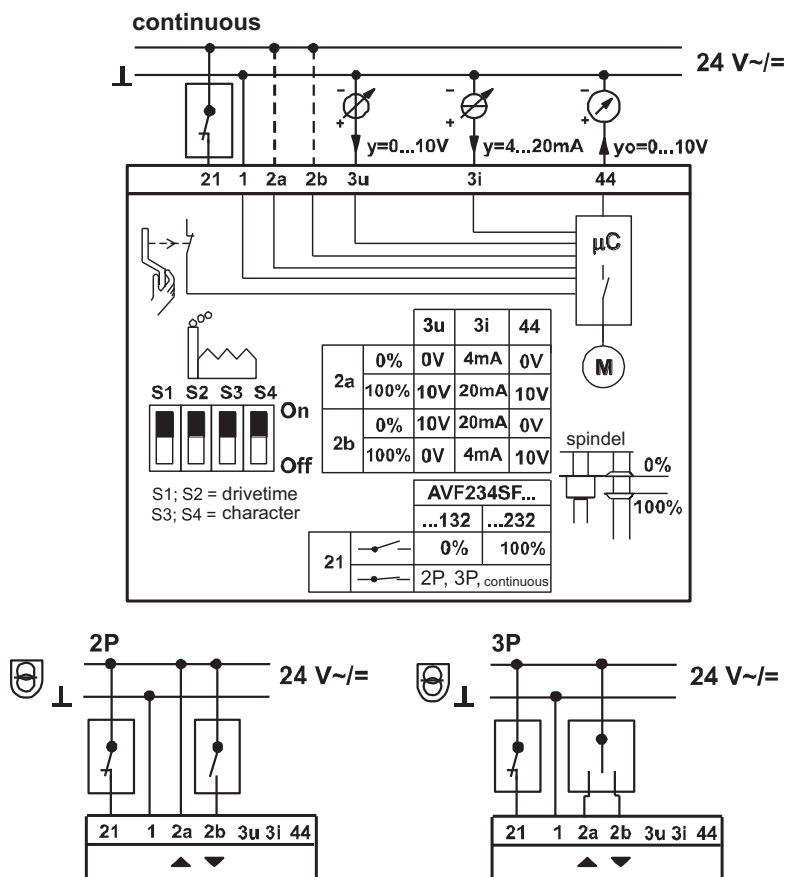
Run time per mm	Switch coding	Run time for 20 mm stroke	Run time for 40 mm stroke
2 s / mm		40 s ± 1	80 s ± 2
4 s / mm		80 s ± 2	160 s ± 4
6 s / mm	 	120 s ± 4	240 s ± 8

Note: Data in bold mean factory settings.

Dimensions of actuator and a mid piece for higher temperatures

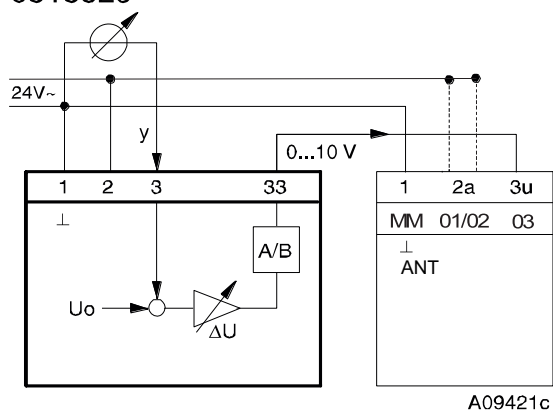


Wiring of actuators

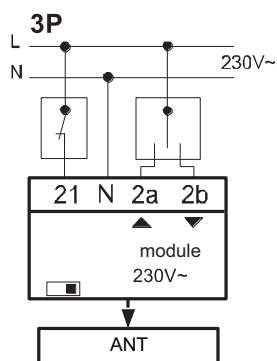
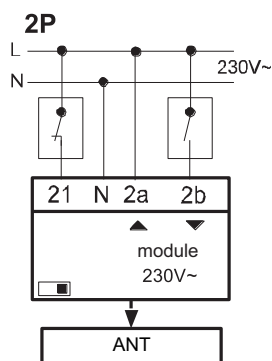
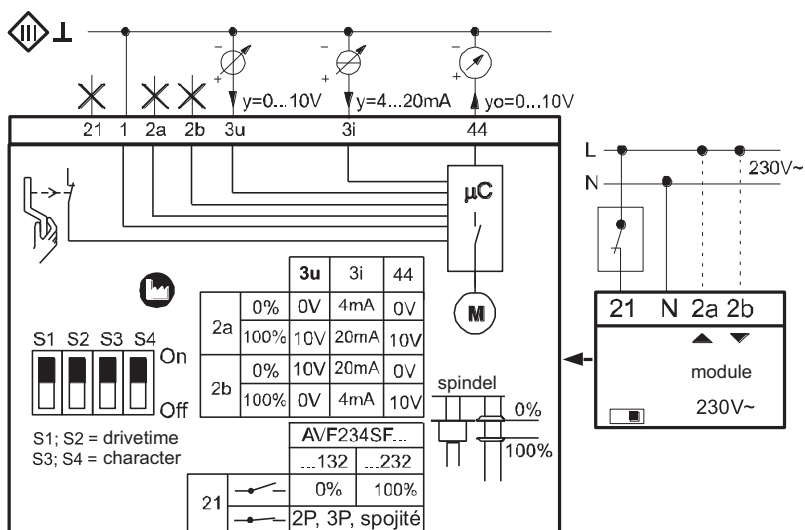


Wiring diagram of accessories

0313529

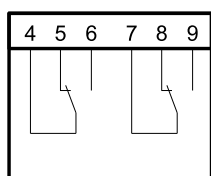


0372332001



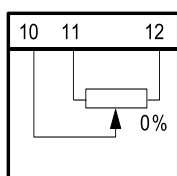
A10663c

372333



A10376

372334



A01363



LDM, spol. s r.o.
Litomyšlská 1378
560 02 Česká Třebová
Czech Republic

tel.: +420 465 502 511
fax: +420 465 533 101
E-mail: sale@ldm.cz
<http://www.ldm.cz>

LDM, spol. s r.o.
Kancelář Praha
Podolská 50
147 01 Praha 4

tel.: 241087360
fax: 241087192
E-mail: tomas.suchanek@ldm.cz

LDM, spol. s r.o.
Kancelář Ústí nad Labem
Ladova 2548/38
400 11 Ústí nad Labem
- Severní Terasa

tel.: +420 602708257
E-mail: tomas.kriz@ldm.cz

LDM servis, spol. s r.o.
Litomyšlská 1378
560 02 Česká Třebová
Czech Republic

tel.: +420 465 502 411-3
fax: +420 465 531 010
E-mail: servis@ldm.cz

LDM, Polska Sp. z o.o.
Modelarska 12
40 142 Katowice
Poland

tel.: +48 32 730 56 33
fax: +48 32 730 52 33
mobile: +48 601 354 999
E-mail: ldmpolska@ldm.cz

LDM Bratislava s.r.o.
Mierová 151
821 05 Bratislava
Slovakia

tel.: +421 2 43415027-8
fax: +421 2 43415029
E-mail: ldm@ldm.sk
<http://www.ldm.sk>

LDM - Bulgaria - OOD
z. k. Mladost 1
bl. 42, floor 12, app. 57
1784 Sofia
Bulgaria

tel.: +359 2 9746311
fax: +359 2 9746311
mobile: +359 888 925 766
E-mail: ldm.bg@ldmvalves.com

OOO "LDM Promarmatura"
Jubilejnyi prospekt,
dom.6a, of. 601
141400 Khimki Moscow Region
Russian Federation

tel.: +7 4957772238
fax: +7 4956662212
mobile: +7 9032254333
E-mail: inforus@ldmvalves.com

TOO "LDM"
Lobody 46/2
Office No. 4
100008 Karaganda
Kazakhstan

tel.: +7 7212 566 936
fax: +7 7212 566 936
mobile: +7 701 738 36 79
E-mail: sale@ldm.kz
<http://www.ldm.kz>

LDM Armaturen GmbH
Wupperweg 21
D-51789 Lindlar
Germany

tel.: +49 2266 440333
fax: +49 2266 440372
mobile: +49 177 2960469
E-mail: ldmmarmaturen@ldmvalves.com
<http://www.ldmvalves.com>

Your partner